

Talbenny Grove



Spacious, and popular 'Faversham' design

Available with 'No Forward Chain'

Impressive, landscaped rear garden, drive and garage

Favoured 'Round Hill' location

Generous lounge, conservatory, dining room and kitchen/breakfast room

£269,950



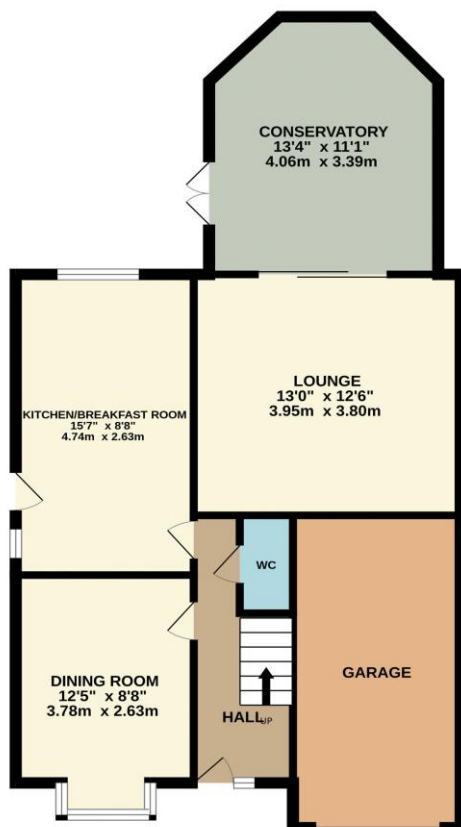
Multi-Award Wining



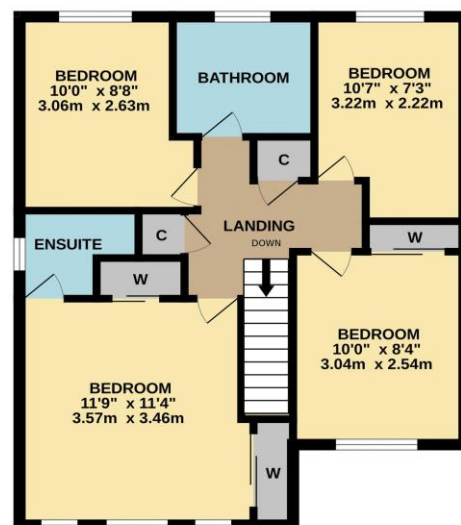
Built to the spacious 'Faversham' design, and with a generous conservatory which further enhances the living space, warmed with under-floor heating. This especially attractive property is available with 'No Forward Chain' and is located within this popular 'Round Hill' area of Ingleby Barwick, boasting a lovely rear garden with striking deck and patio, double width front drive, garage, and front garden.

Internally, the accommodation is cared for, and very well presented, briefly comprising an entrance hall, cloakroom/WC, bay-fronted dining room, separate kitchen/breakfast room, spacious lounge and conservatory to the ground floor. The first floor delivers four bedrooms, 'Master' with ensuite and fitted robes, a feature repeated in bedroom two, separate family bathroom. The rear garden is particular feature, landscaped and modern, with lawn, deck and patio.

GROUND FLOOR



1ST FLOOR



“The Ingleby Barwick Experts”





Tenure: Freehold

Council Tax Band: D

EPC Rating: TBC



AGENTS NOTE: Every care has been taken with the preparation of these details, but they are for general guidance only. Measurements and dimensions are approximate, and any fixtures or fittings shown in photography does not infer that they are to be included within the sale. The agent has not tested any appliances or supplies and professional verification of these should be sought prior to purchase if required. These particulars do not constitute a contract or part of a contract.