



Spacious accommodation over three levels

Impressive open-plan kitchen/diner, with 'French' doors to the garden

'Master' with fitted robes and smart en-suite

Popular 'Broom Hill' area

Attractive throughout, viewing advised

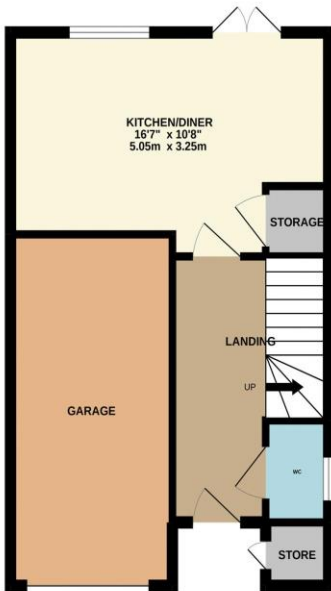


Multi-Award Wining

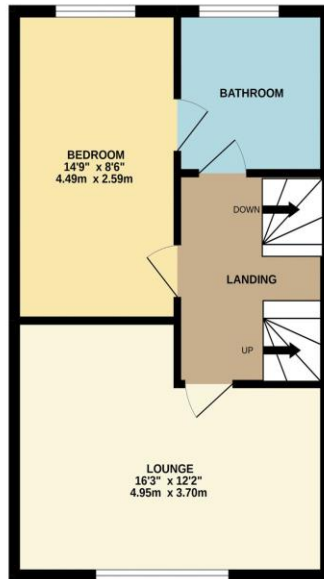
Offering deceptively spacious, and modern accommodation, over three impressive levels, internal inspection is recommended to appreciate the living space, this smart, three bedroom property has to offer. Located within the always popular, 'Broomhill' area of Ingleby Barwick, with attractive, enclosed rear garden, integral garage and front drive. The generous room sizes are a feature of this design, with the open-plan kitchen/diner being particularly generous, offering 'French' doors to the rear garden.

Very briefly, the accommodation comprises an entrance hall, cloakroom/WC and kitchen/diner to the ground floor. The first floor delivers the main living room, the second bedroom and modern family bathroom, which can act as en-suite to the second bedroom with an interlinking door. The impressive 'Master' bedroom is found on the second floor, with fitted robes and smart en-suite, along with bedroom three - both accessed of a feature landing, ideal for a home office area.

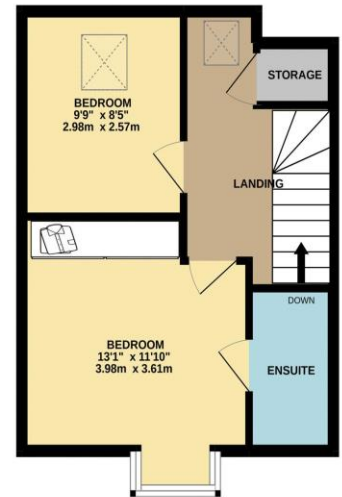
GROUND FLOOR



1ST FLOOR



2ND FLOOR



Whilst every attempt has been made to ensure the accuracy of the floorplan contained here, measurements of doors, windows, rooms and any other items are approximate and no responsibility is taken for any error, omission or mis-statement. This plan is for illustrative purposes only and should be used as such by any prospective purchaser. The services, systems and appliances shown have not been tested and no guarantee as to their operability or efficiency can be given.
Made with Metropix ©2022



“The Ingleby Barwick Experts”



www.ingleby-homes.co.uk

01642 671025



AGENTS NOTE: Every care has been taken with the preparation of these details, but they are for general guidance only. Measurements and dimensions are approximate, and any fixtures or fittings shown in photography does not infer that they are to be included within the sale. The agent has not tested any appliances or supplies and professional verification of these should be sought prior to purchase if required. These particulars do not constitute a contract or part of a contract.