

# Hatchlands Park



Available with 'no forward chain'

Modern two bedroom apartment

Top floor within smaller, purpose built development

Close to fantastic local amenities

Secure, intercom access

£85,000



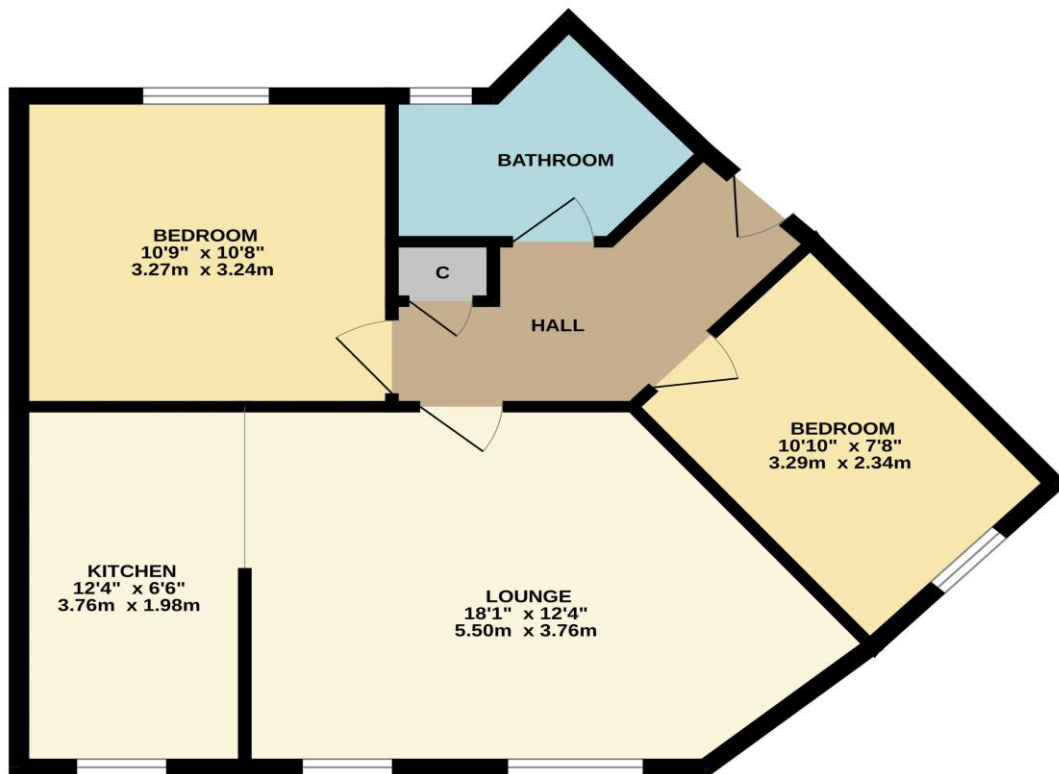


A top floor, two-bedroom apartment located in this popular area of Ingleby Barwick.

Enjoying its own parking with ample visitor spaces also available, and secure 'intercom' access. situated within the heart of Ingleby Barwick, within touching distance of fantastic local amenities, including a supermarket, bars, bistros and restaurant. Positioned on the top floor (second) of this purpose built development and available with 'no forward chain'.

The internal accommodation briefly comprises entrance hall, through lounge/diner and open plan kitchen/breakfast room, two good bedrooms, and the separate family bathroom.

GROUND FLOOR



Whilst every attempt has been made to ensure the accuracy of the floorplan contained here, measurements of doors, windows, rooms and any other items are approximate and no responsibility is taken for any error, omission or mis-statement. This plan is for illustrative purposes only and should be used as such by any prospective purchaser. The services, systems and appliances shown have not been tested and no guarantee as to their operability or efficiency can be given.  
Made with Metropix ©2024



## “The Ingleby Barwick Experts”



Tenure: Leasehold

Council Tax Band: B

EPC Rating: C



AGENTS NOTE: Every care has been taken with the preparation of these details, but they are for general guidance only. Measurements and dimensions are approximate, and any fixtures or fittings shown in photography does not infer that they are to be included within the sale. The agent has not tested any appliances or supplies and professional verification of these should be sought prior to purchase if required. These particulars do not constitute a contract or part of a contract.