

# Forest Lane

INGLEBY  
HOMES



SALES & LETTINGS



Sought after 'Kirklevington' location

Stylish and especially spacious throughout

Stunning refitted kitchen with feature stove, open plan to the impressive conservatory

25ft plus living room with further feature fireplace and stove

Four double bedrooms

£350,000



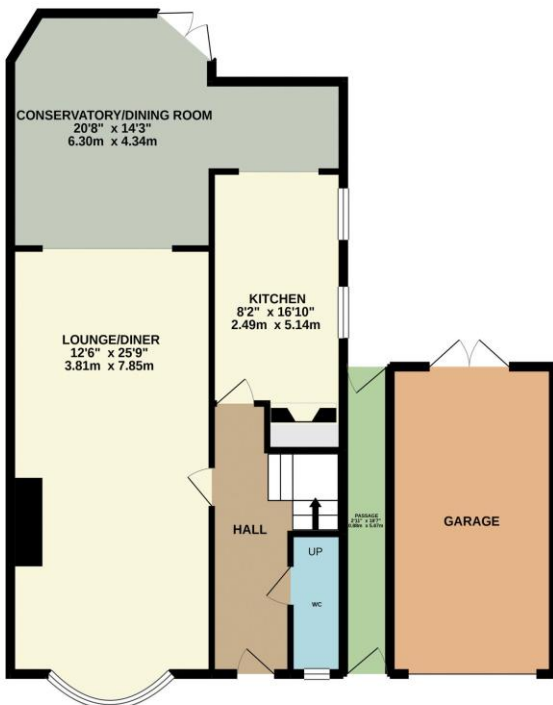
Multi-Award Wining



Especially stylish and upgraded throughout, this spacious and very impressive 'four double bedroom' property, perfectly mixes traditional features with modern luxury and contemporary design - internal inspection is highly recommended to fully appreciate the quality and space on offer. Pleasantly situated within this sought after spot, well set back from the road with generous front garden and lengthy drive that approaches the garage, with easy access to the A19 road networks and nearby Yarm.

The rear garden is attractive, established and enjoys a sunny, southerly facing aspect. Internally, the stunning kitchen, large open-plan conservatory, 25ft plus living room and luxurious family bathroom are features worthy of special mention. Very briefly, the accommodation comprises an entrance hall, cloakroom/WC, through lounge/diner, large conservatory and gorgeous fitted kitchen are available to the ground floor. The first floor delivers the impressive family bathroom and four double bedrooms, one with 'French' doors to a proposed sun terrace, the roof below has been replaced to support as such, but the finishing balustrade above has not yet been completed. Both the living room and kitchen boast 'revealed brick' fireplaces with multi-fuel stoves inset. Internal inspection is highly recommended, you will not be disappointed.

GROUND FLOOR  
970 sq.ft. (90.1 sq.m.) approx.



1ST FLOOR  
735 sq.ft. (68.3 sq.m.) approx.



TOTAL FLOOR AREA : 1705 sq.ft. (158.4 sq.m.) approx.

Whilst every attempt has been made to ensure the accuracy of the floorplan contained here, measurements of doors, windows, rooms and any other items are approximate and no responsibility is taken for any error, omission or mis-statement. This plan is for illustrative purposes only and should be used as such by any prospective purchaser. The services, systems and appliances shown have not been tested and no guarantee as to their operability or efficiency can be given.  
Made with Metropix ©2021

# "The Property Experts"





**INGLEBY  
HOMES**  
SALES & LETTINGS

AGENTS NOTE: Every care has been taken with the preparation of these details, but they are for general guidance only. Measurements and dimensions are approximate, and any fixtures or fittings shown in photography does not infer that they are to be included within the sale. The agent has not tested any appliances or supplies and professional verification of these should be sought prior to purchase if required. These particulars do not constitute a contract or part of a contract.