

Leith Walk



£124,500

Attractive three bedroom property

Popular Thornaby area, with 'Green' in front, closed to traffic

Three bedrooms and useful converted loft room

No forward chain, ideal first purchase

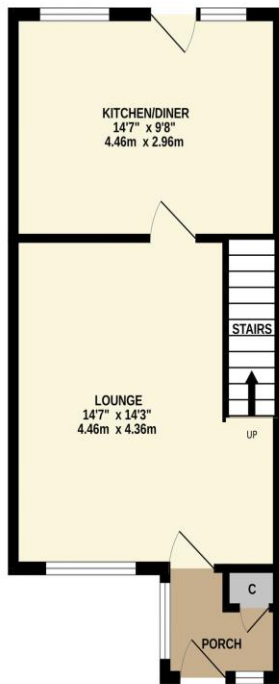


This attractive three bedroom property provides a great purchase opportunity, and may prove popular with first time buyers. Situated within this pleasant Thornaby area, with a green sitting ahead, and parking to the rear.

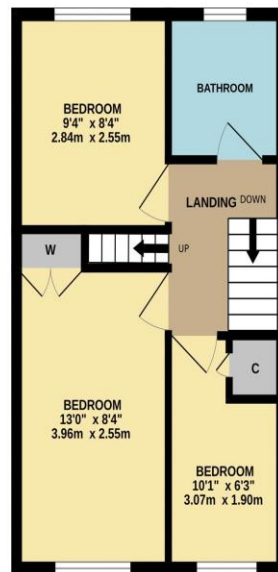
A converted loft room with fixed steps access is a real bonus, with clever fitted storage and further eve access, a space that could be optimised to suit a new owner. The ground floor delivers an entrance porch, lounge, and open-plan kitchen/diner. Three bedrooms, one with fitted robes are found on the first floor, along with the family bathroom. A lovely rear garden is fence enclosed, mainly laid to paved patio, with plant beds, and shed.

Home, changes everything

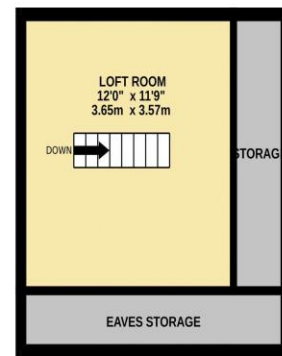
GROUND FLOOR
380 sq.ft. (35.3 sq.m.) approx.



1ST FLOOR
351 sq.ft. (32.6 sq.m.) approx.



2ND FLOOR
213 sq.ft. (19.8 sq.m.) approx.



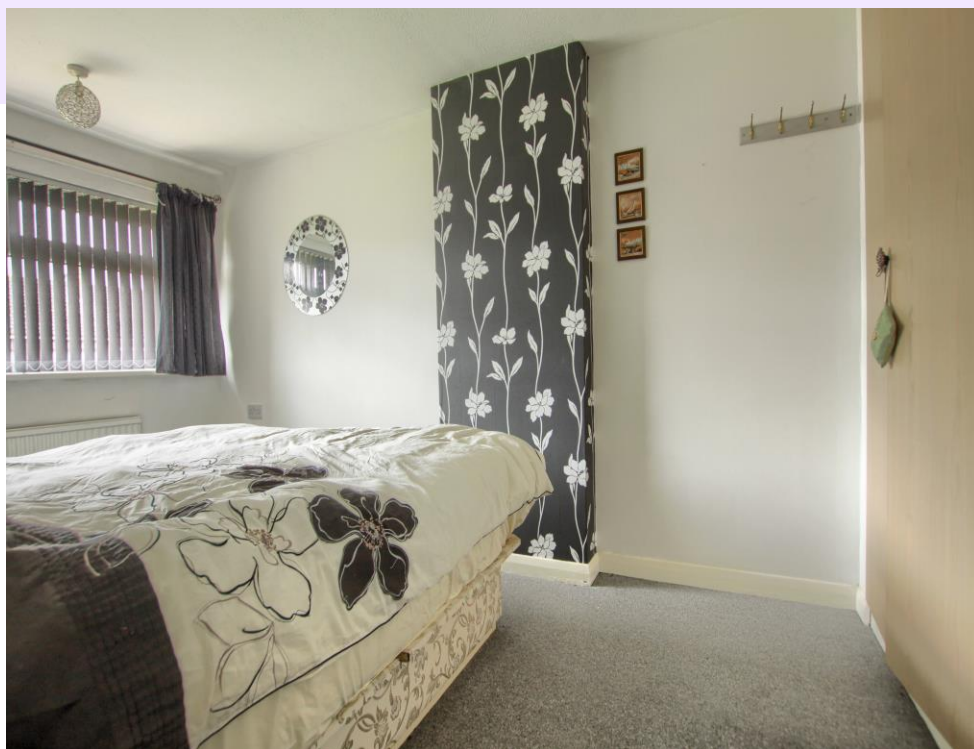
TOTAL FLOOR AREA: 944 sq.ft. (87.7 sq.m.) approx.

Whilst every attempt has been made to ensure the accuracy of the floorplan contained here, measurements of doors, windows, rooms and any other items are approximate and no responsibility is taken for any error, omission or mis-statement. This plan is for illustrative purposes only and should be used as such by any prospective purchaser. The services, systems and appliances shown have not been tested and no guarantee as to their operability or efficiency can be given.
Made with Metropix ©2024

Tenure: Freehold

Council Tax Band: B

EPC Rating: C



www.ingleby-homes.co.uk