



- Executive, five bedroom property
- Available from February 1st 2021
- Stylish and impressive throughout
- Stunning open-plan kitchen/diner/family room
- Five bedrooms, two en-suite, separate family bathroom



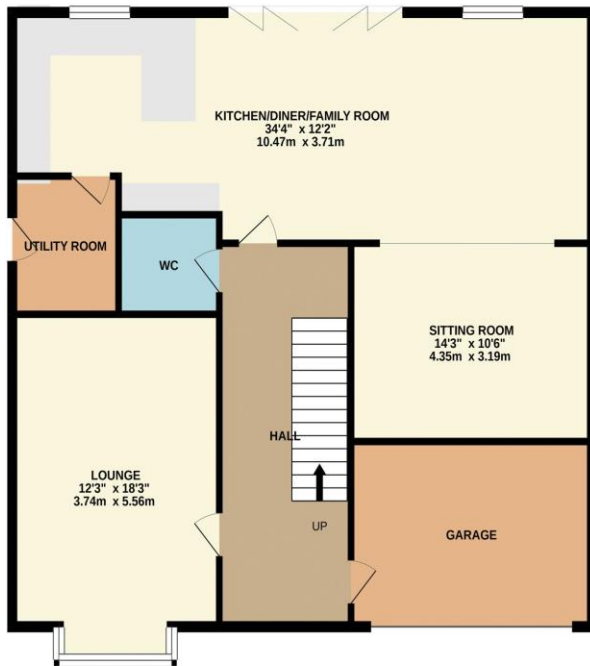
Multi-Award Wining



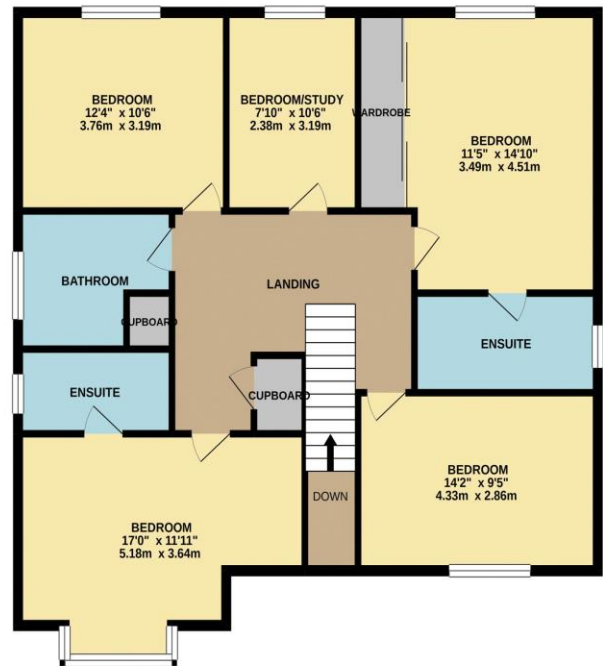
This executive, five-bedroom detached residence is available 'For Let' from February 1st. Built by 'Avant' to this especially impressive and spacious design, finished to a very high standard and packed with quality, whilst the ground floor living space has been further enhanced with a professional, part garage conversion allowing a further sitting room.

The open plan kitchen/diner/family room is stunning, with bi-fold door to the rear garden, whilst the ground floor also enjoys a separate lounge to the front. The first floor delivers five fantastic bedrooms, two with en-suite facilities and the 'Master' with generous fitted robes, separate family bathroom. The standard of finish is typified in the quality of the kitchen and bathrooms, all extremely 'high spec' and stylish. Please take time to study the floor plan for an illustration of the accommodation and layout. Internal inspection is highly recommended.

GROUND FLOOR
1124 sq.ft. (104.4 sq.m.) approx.



1ST FLOOR
1058 sq.ft. (98.3 sq.m.) approx.

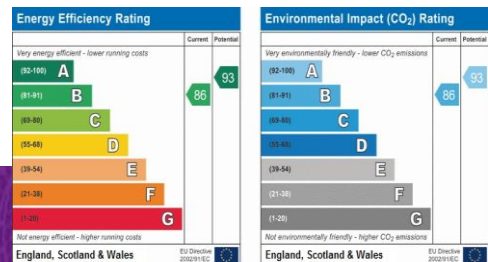


TOTAL FLOOR AREA : 2182 sq.ft. (202.7 sq.m.) approx.

Whilst every attempt has been made to ensure the accuracy of the floorplan contained here, measurements of doors, windows, rooms and any other items are approximate and no responsibility is taken for any error, omission or mis-statement. This plan is for illustrative purposes only and should be used as such by any prospective purchaser. The services, systems and appliances shown have not been tested and no guarantee as to their operability or efficiency can be given.
Made with Metropix ©2020



“The Ingleby Barwick Experts”



www.ingleby-homes.co.uk

01642 671025



AGENTS NOTE: Every care has been taken with the preparation of these details, but they are for general guidance only. Measurements and dimensions are approximate, and any fixtures or fittings shown in photography does not infer that they are to be included within the sale. The agent has not tested any appliances or supplies and professional verification of these should be sought prior to purchase if required. These particulars do not constitute a contract or part of a contract.