

# Pennydarren Way



Large, executive, five bedroom property

Built to the impressive 'Holland' design by Charles Church

Extensive accommodation, separate lounge, sitting room and 34ft plus kitchen/diner/family room

Master with full bathroom en-suite and dressing room

Available from September 2022

£1,650pcm



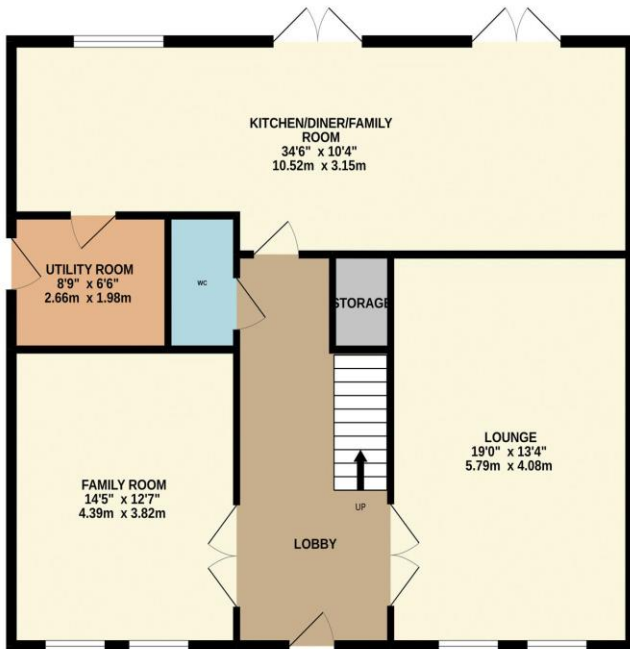
Multi-Award Wining



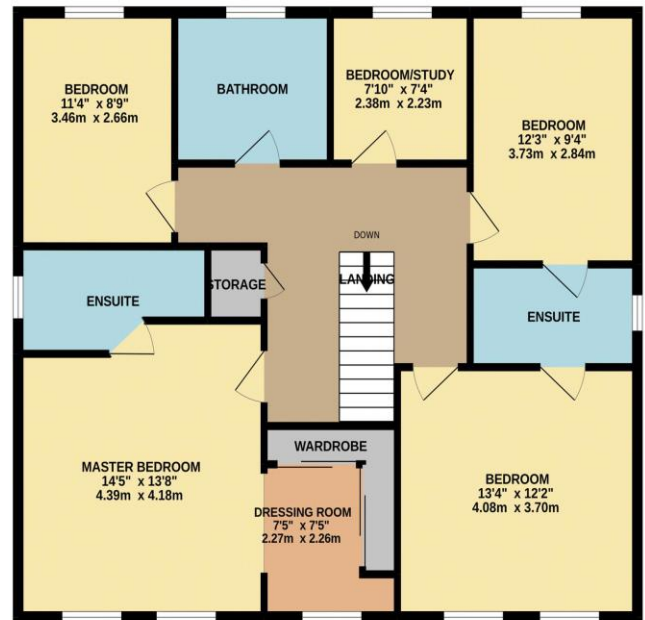
Available FOR LET, from September 2022, this large, executive property is built to the impressive 'Holland' design by Charles Church. Located within 'The Rings' of Ingleby Barwick, and occupying an enviable position, tucked back from the road, with block paved drive, detached double garage, front and rear gardens.

Incredibly spacious throughout and boasting three, individual living areas on the fantastic ground floor, with a generous lounge, separate sitting room, and 34ft plus kitchen/diner/family room across the rear. The first floor delivers five great bedrooms, 'Master' with walk-in dressing room enjoying fitted robes and full bathroom en-suite, whilst a further en-suite acts as a 'Jack & Jill' to bedrooms two and three, additional family bathroom. Some of the furniture may be included, but can also be removed to suit the right tenant. call Ingleby Homes to arrange your viewing.

GROUND FLOOR  
1012 sq.ft. (94.1 sq.m.) approx.



1ST FLOOR  
1012 sq.ft. (94.1 sq.m.) approx.



TOTAL FLOOR AREA : 2025 sq.ft. (188.1 sq.m.) approx.

Whilst every attempt has been made to ensure the accuracy of the floorplan contained here, measurements of doors, windows, rooms and any other items are approximate and no responsibility is taken for any error, omission or mis-statement. This plan is for illustrative purposes only and should be used as such by any prospective purchaser. The services, systems and appliances shown have not been tested and no guarantee as to their operability or efficiency can be given.  
Made with Metropix ©2022



# “The Ingleby Barwick Experts”



AGENTS NOTE: Every care has been taken with the preparation of these details, but they are for general guidance only. Measurements and dimensions are approximate, and any fixtures or fittings shown in photography does not infer that they are to be included within the sale. The agent has not tested any appliances or supplies and professional verification of these should be sought prior to purchase if required. These particulars do not constitute a contract or part of a contract.