

# Norwood Close



Superb, much improved family home

Generous plot with attractive gardens, block pave drive, and double garage

All four bedrooms with quality fitted furniture

Impressive refitted kitchen within 21ft plus kitchen/diner

Large rear conservatory

**£240,000**



Multi-Award Wining



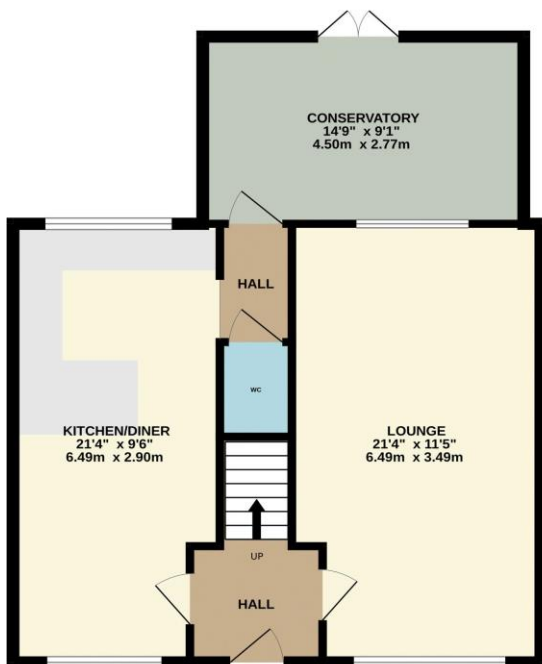


Impressive and much improved throughout, with many features which include a superb refitted kitchen, stylish refitted family bathroom and cloakroom, generous rear conservatory, double garage and quality fitted furniture to all four bedrooms.

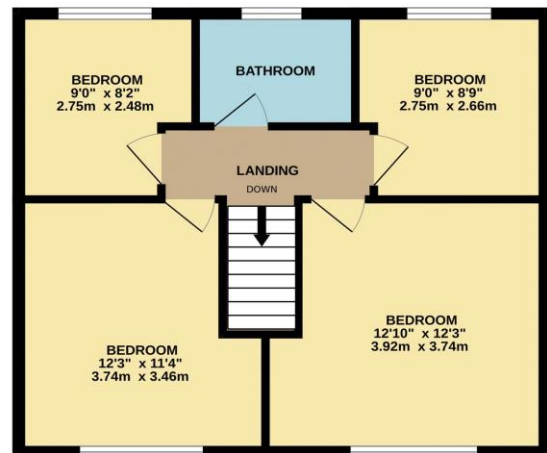
Benefiting from full UPVC double glazing and warmed by gas central heating, the internal accommodation very briefly comprises an entrance hall, 21ft plus lounge, 21ft plus open plan kitchen/diner, inner hall, cloakroom/WC and rear conservatory to the ground floor.

The first floor bringing the four generous bedrooms and family bathroom. Externally a generous block pave drive allows off road parking and approaches the detached double garage. The established front garden is boarded to the front with mature trees, whilst the rear garden is wall enclosed with well tended lawn and generous near end and side patio.

GROUND FLOOR



1ST FLOOR



Whilst every attempt has been made to ensure the accuracy of the floorplan contained here, measurements of doors, windows, rooms and any other items are approximate and no responsibility is taken for any error, omission or mis-statement. This plan is for illustrative purposes only and should be used as such by any prospective purchaser. The services, systems and appliances shown have not been tested and no guarantee as to their operability or efficiency can be given.  
Made with Metropix ©2024

# “The Ingleby Barwick Experts”







Tenure: Freehold

Council Tax Band: D

EPC Rating: D



AGENTS NOTE: Every care has been taken with the preparation of these details, but they are for general guidance only. Measurements and dimensions are approximate, and any fixtures or fittings shown in photography does not infer that they are to be included within the sale. The agent has not tested any appliances or supplies and professional verification of these should be sought prior to purchase if required. These particulars do not constitute a contract or part of a contract.