

Kenwood Crescent



Spacious accommodation over three levels

Popular 'Broom Hill' area of Ingleby Barwick

Generous rear garden with private 'Tree-Lined' outlook

Three second floor bedrooms, 'Master' with robes and ensuite

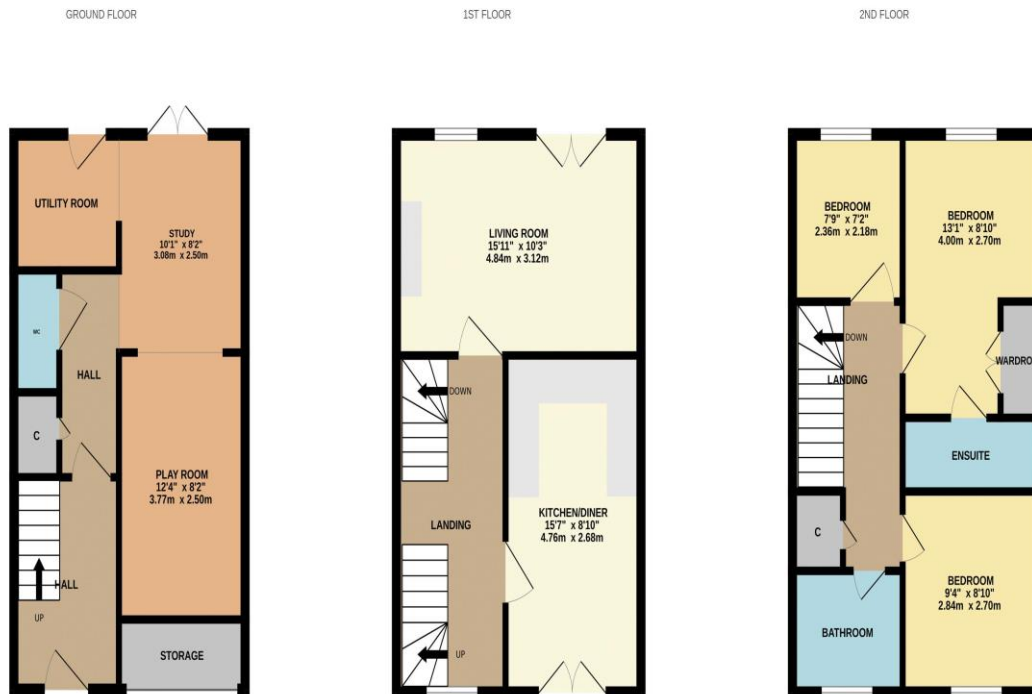
First floor living room and impressive kitchen/diner

£197,950





Delivering flexible living space, over three levels, this spacious property certainly requires internal inspection for its accommodation to be appreciated. Located within this popular 'Broom Hill' area, close to great local amenities, and 'highly thought of' schooling, whilst enjoying a front drive, and attractive rear garden which boasts a private, 'tree-lined' rear outlook. The ground floor has seen some remodelling, within which a majority garage conversion has provided a fantastic playroom, being open-plan to the study, with useful utility room off, an area accessed from the entrance hall with cloakroom/WC. The first floor comprises the main living room, with feature 'Media Chimney' and French doors overlooking a 'Juliet' balcony to the rear garden, a feature repeated to the front elevation from the spacious kitchen/diner. Three good bedrooms, one being the 'Master' with robes and ensuite occupies the second floor, along with the separate family bathroom.



Whilst every attempt has been made to ensure the accuracy of the floorplan contained here, measurements of doors, windows, rooms and any other items are approximate and no responsibility is taken for any error, omission or mis-statement. This plan is for illustrative purposes only and should be used as such by any prospective purchaser. The services, systems and appliances shown have not been tested and no guarantee as to their operability or efficiency can be given.
Made with Metropix 62024



“The Ingleby Barwick Experts”



Tenure: Freehold

Council Tax Band: D

EPC Rating:



AGENTS NOTE: Every care has been taken with the preparation of these details, but they are for general guidance only. Measurements and dimensions are approximate, and any fixtures or fittings shown in photography does not infer that they are to be included within the sale. The agent has not tested any appliances or supplies and professional verification of these should be sought prior to purchase if required. These particulars do not constitute a contract or part of a contract.