



Stunning two bedroom bungalow

Extensively refurbished and presented to 'Show Home' standards

Impressive refitted kitchen/diner with appliances and 'Carrera Quartz' tops

Lovely cul-de-sac position with established gardens and garage

Stylish refitted shower room

OIEO £249,995



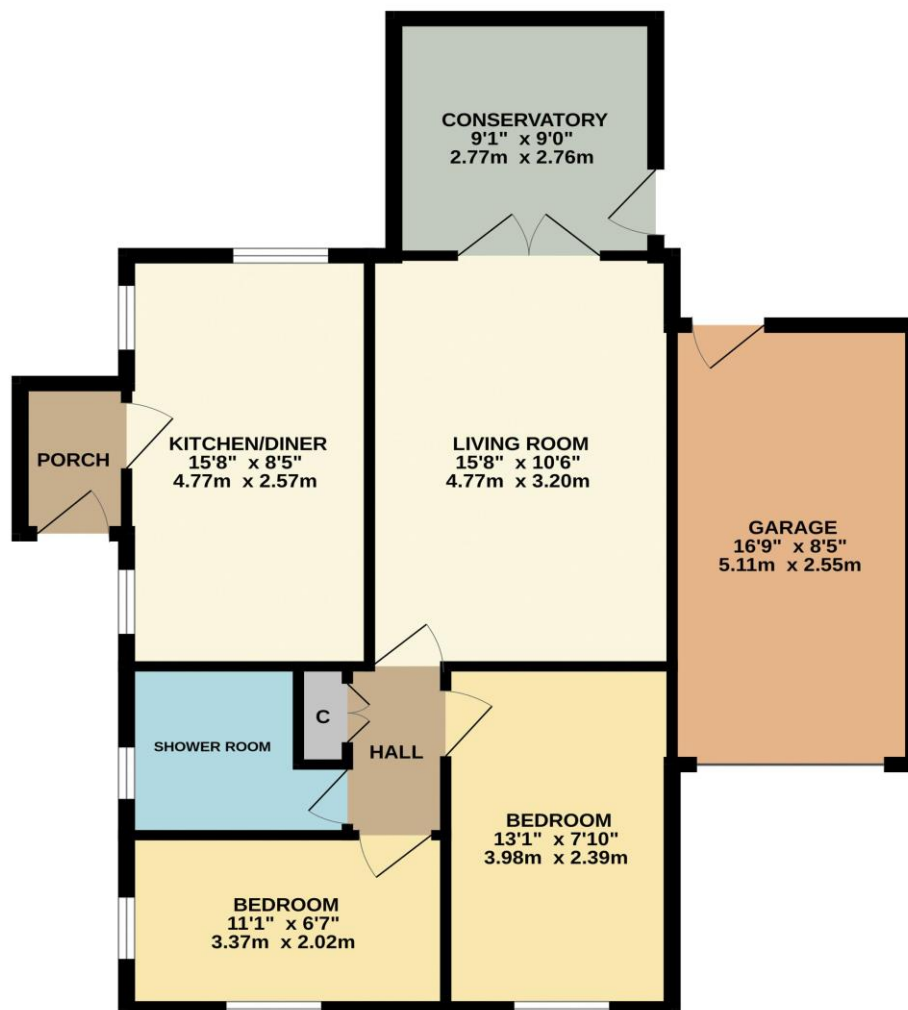
Multi-Award Wining



Stunning! This outstanding bungalow has been significantly refurbished, upgraded and improved with 'little expense spared'. Stylish throughout, and demanding of internal inspection to be fully appreciated, the accommodation is presented to 'Show Home' standards. The stunning refitted kitchen with 'Carrera Quartz' tops, and range of integrated appliances is a feature worthy of special mention, along with the stylish refitted shower room, not to mention the 'Oak' internal doors, full new 'Hive' controlled heating system and 'Amtico Herringbone' flooring.

Sitting perfectly at the top of this quiet Lowfield's cul-de-sac, close to bus routes and amenities, whilst enjoying established side and rear gardens, with drive and garage, which benefits from a new electric roller door. Internally, the immaculate accommodation comprises an entrance porch, impressive kitchen/diner, spacious lounge, inner hall with storage, two good bedrooms and the stylish shower room. Ingleby Homes recommended.

GROUND FLOOR  
787 sq.ft. (73.1 sq.m.) approx.



TOTAL FLOOR AREA: 787 sq.ft. (73.1 sq.m.) approx.

Whilst every attempt has been made to ensure the accuracy of the floorplan contained here, measurements of doors, windows, rooms and any other items are approximate and no responsibility is taken for any error, omission or mis-statement. This plan is for illustrative purposes only and should be used as such by any prospective purchaser. The services, systems and appliances shown have not been tested and no guarantee as to their operability or efficiency can be given.

Made with Metropix ©2024

# “The Ingleby Barwick Experts”





Tenure: Freehold

Council Tax Band: B

EPC Rating: D



AGENTS NOTE: Every care has been taken with the preparation of these details, but they are for general guidance only. Measurements and dimensions are approximate, and any fixtures or fittings shown in photography does not infer that they are to be included within the sale. The agent has not tested any appliances or supplies and professional verification of these should be sought prior to purchase if required. These particulars do not constitute a contract or part of a contract.