

# Kenwood Crescent

INGLEBY  
HOMES



SALES & LETTINGS



Accommodation over three levels

Popular 'Simonside' design by Persimmon

Three double bedrooms

Off street parking and enclosed rear garden

Spacious lounge and separate kitchen/diner

£159,950

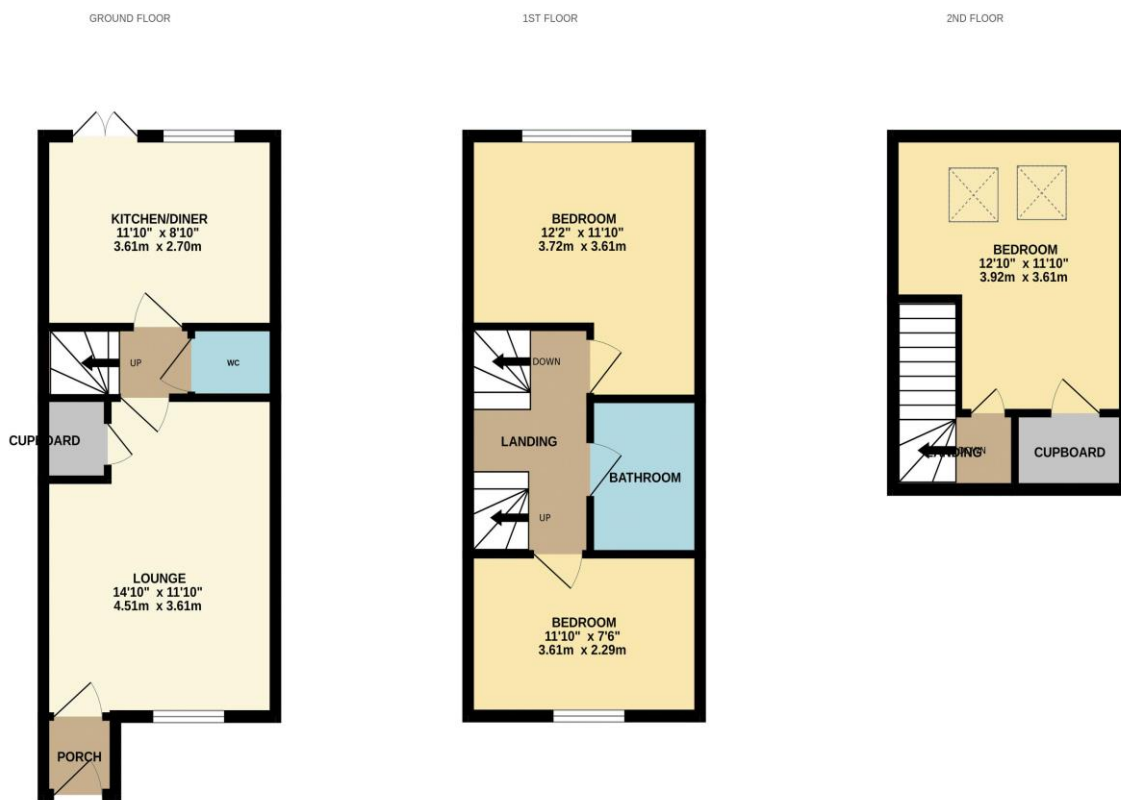






Built to the popular 'Simonside' design, by Persimmon, this deceptively spacious property offers accommodation over three levels. A feature being the three generous double bedrooms, that makes it appealing to a wide audience. Situated within this sought after 'Broom Hill' location, perfect for local schooling and fantastic amenities, with off-road parking to the front, and enclosed rear garden.

Briefly, the accommodation comprises an entrance hall, lounge, inner hall, cloakroom/WC and kitchen/diner to the ground floor. The first floor brings two of the bedrooms, and the attractive family bathroom, whilst the third double bedroom is found on the second floor, with large, walk-in closet.



Whilst every attempt has been made to ensure the accuracy of the floorplan contained here, measurements of doors, windows, rooms and any other items are approximate and no responsibility is taken for any error, omission or mis-statement. This plan is for illustrative purposes only and should be used as such by any prospective purchaser. The services, systems and appliances shown have not been tested and no guarantee as to their operability or efficiency can be given.  
Made with Metropix ©2024





# “The Ingleby Barwick Experts”



Tenure: Freehold

Council Tax Band: C

EPC Rating: C



AGENTS NOTE: Every care has been taken with the preparation of these details, but they are for general guidance only. Measurements and dimensions are approximate, and any fixtures or fittings shown in photography does not infer that they are to be included within the sale. The agent has not tested any appliances or supplies and professional verification of these should be sought prior to purchase if required. These particulars do not constitute a contract or part of a contract.