

# Lingwood Court



Modern development with popular Thornaby location

Modern fitted kitchen adjoining lounge

Two good bedrooms, 'Master' with ensuite

Ideal first purchase or 'buy to let'

Allocated parking and ample visitor bays

**£69,995**

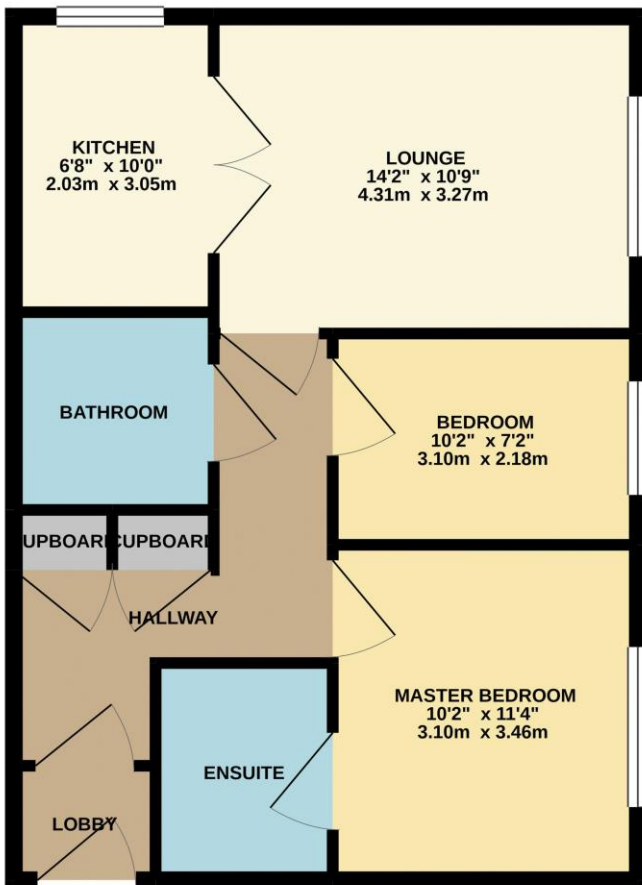




Situated within this modern, and popular Thornaby development, this spacious apartment may prove especially popular to the first time buyer, or those seeking an ideal buy to let. T

he development benefits from allocated occupier parking, with ample additional visitor bays, and secure, intercom access. Internally, the modern accommodation comprises an entrance hall with fitted storage cupboards, lounge with modern fitted kitchen off, two good bedrooms, 'Master' with ensuite, and separate bathroom. No forward chain involved. Currently let and achieving £525 per calendar month, can be sold vacant, or tenanted to suit a new owner.

THIRD FLOOR



TOTAL FLOOR AREA: 608 sq. ft. (56.5 sq. m.) approx.

Whilst every attempt has been made to ensure the accuracy of the floorplan contained here, measurements of doors, windows, rooms and any other items are approximate and no responsibility is taken for any error, omission or mis-statement. This plan is for illustrative purposes only and should be used as such by any prospective purchaser. The services, systems and appliances shown have not been tested and no guarantee as to their operability or efficiency can be given.  
Made with Metropix ©2020



# “The Property Experts”



Tenure: Leasehold

Council Tax Band: B

EPC Rating: B



AGENTS NOTE: Every care has been taken with the preparation of these details, but they are for general guidance only. Measurements and dimensions are approximate, and any fixtures or fittings shown in photography does not infer that they are to be included within the sale. The agent has not tested any appliances or supplies and professional verification of these should be sought prior to purchase if required. These particulars do not constitute a contract or part of a contract.