

# Hillbrook Crescent



Top floor apartment

£94,950

Secure intercom access, allocated parking bays and additional visitor spaces

Generous lounge, modern open-plan kitchen

Ideal first purchase, or buy-to-let

No forward chain



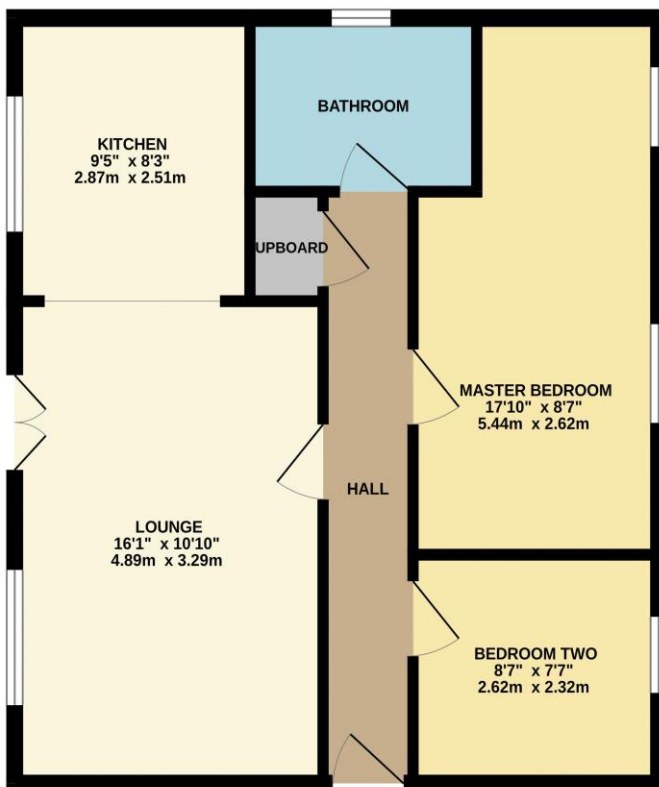




This second floor apartment is available with 'No Forward Chain' whilst being situated within the heart of Ingleby Barwick. Perfectly situated for fantastic local amenities, just a stroll to local shopping, bars, and eateries.

Benefitting from secure, intercom access, and enjoying a rear car park that caters for visitors, along with numbered bays for owners. Briefly, the accommodation comprises an entrance hall, generous lounge with feature 'Juliet' balcony, open-plan modern kitchen, two bedrooms, and separate bathroom. Of particular interest to the first time purchaser, or those seeking an ideal buy-to-let, with similar achieving around £650pcm.

GROUND FLOOR



Whilst every attempt has been made to ensure the accuracy of the floorplan contained here, measurements of doors, windows, rooms and any other items are approximate and no responsibility is taken for any error, omission or mis-statement. This plan is for illustrative purposes only and should be used as such by any prospective purchaser. The services, systems and appliances shown have not been tested and no guarantee as to their operability or efficiency can be given.  
Made with Metropix ©2024





# “The Ingleby Barwick Experts”



Tenure: Leasehold

Council Tax Band: B

EPC Rating: B



AGENTS NOTE: Every care has been taken with the preparation of these details, but they are for general guidance only. Measurements and dimensions are approximate, and any fixtures or fittings shown in photography does not infer that they are to be included within the sale. The agent has not tested any appliances or supplies and professional verification of these should be sought prior to purchase if required. These particulars do not constitute a contract or part of a contract.