

# Longleat Walk



Attractive, two bedroom, ground floor apartment

**£96,000**

Possible alternative to a bungalow

Close to fantastic local amenities

En-suite to larger bedroom

Open plan living room, modern fitted kitchen

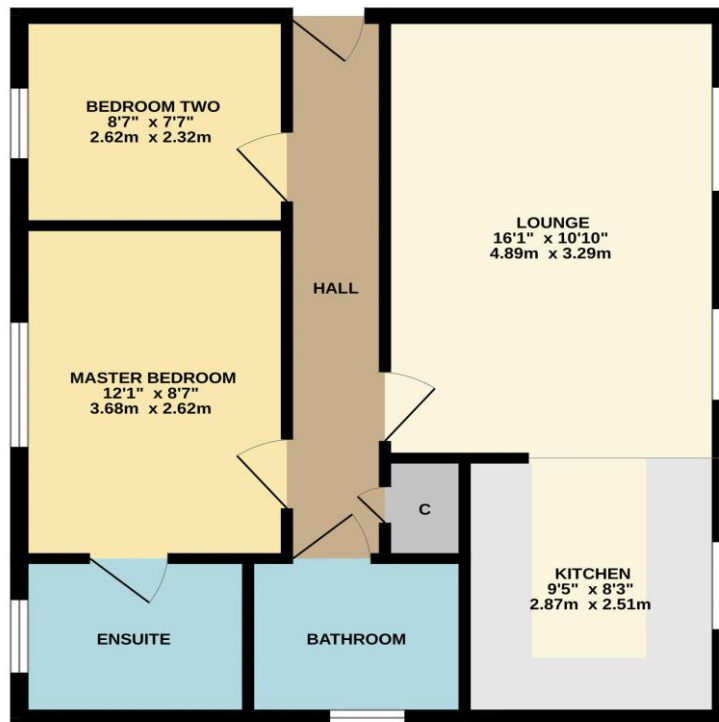




Enjoying a ground floor position within this modern development, and possibly providing a perfect alternative to a bungalow, this attractive two bedroom apartment is certainly worth a closer look. Benefitting from secure, intercom access, with allocated parking and extra visitor spaces to the rear, whilst being perfectly situated for local amenities.

Internally, you enter an entrance hall with storage cupboard, the spacious lounge/diner is to the left, and open plan to the attractive fitted kitchen. The larger of the two bedrooms is en-suite, separate, updated modern bathroom. To be sold with 'No Forward Chain'.

GROUND FLOOR



Whilst every attempt has been made to ensure the accuracy of the floorplan contained here, measurements of doors, windows, rooms and any other items are approximate and no responsibility is taken for any error, omission or mis-statement. This plan is for illustrative purposes only and should be used as such by any prospective purchaser. The services, systems and appliances shown have not been tested and no guarantee as to their operability or efficiency can be given.  
Made with Metropix ©2023



# “The Ingleby Barwick Experts”



Tenure: Leasehold

Council Tax Band: B

EPC Rating: B



AGENTS NOTE: Every care has been taken with the preparation of these details, but they are for general guidance only. Measurements and dimensions are approximate, and any fixtures or fittings shown in photography does not infer that they are to be included within the sale. The agent has not tested any appliances or supplies and professional verification of these should be sought prior to purchase if required. These particulars do not constitute a contract or part of a contract.