

Oxbridge Avenue



Large, upgraded and very stylish property

£325,000

Significantly improved and with lots of further potential

Impressive throughout, packed with quality

Separate lounge, dining room and kitchen/diner - all with feature fireplaces

Wrap around plot, with gardens and extensive patio, re-laid, gated drive





Large, spacious, much improved and incredibly stylish - this outstanding property is certainly worth a closer look.

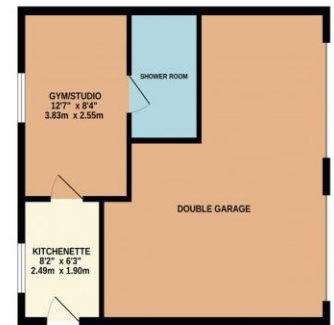
Built in the 1930s, and still retaining many features and much charm, delivered with modern comforts and an abundance of style, whilst providing generous, and flexible accommodation. A self-contained, separate annex adjoins the rear of the double garage, with kitchenette, lounge (currently optimised as a home gym) and modern shower room, a space that could easily be enlarged by involving some of the garage, if a new owner chose to do so. Whilst planning has previously been granted for extensions to both the front, and side elevations, so the further potential is significant. Internally, you arrive into a welcoming entrance reception hall, with feature panelling, noticing the two receptions to the right, and kitchen/diner ahead.

The lounge is bay fronted, and particularly attractive, with bespoke cabinets and ornate feature fireplace, and as with the rest within the home, is open and ready to use. The dining room/second reception sits behind that, with a bay to the side elevation and further feature fireplace. The kitchen/diner is a great space, split level, with the dining area sat beside a /revealed brick' chimney, with multi-fuel stove inset, whilst the kitchen offers a range of units, tailored around a feature 'Range'. The first floor brings three good bedrooms, accessed of the lovely landing, along with the superb, luxurious family bathroom. The property sits on a generous corner plot, with wrap-around, established gardens, which always catch the sun. The front and side being hedged lined with mature shrubs and foliage, laid largely to lawn, the rear bringing large patios and further enclosed section of the annex. A re-laid, resin drive to the side elevation is accessed via an electric, remote operated gate, offering parking for several vehicles. Viewing is certainly recommended.

GROUND FLOOR

1ST FLOOR

GARAGE/STUDIO



Whilst every attempt has been made to ensure the accuracy of the floorplan contained here, measurements of doors, windows, rooms and any other items are approximate and no responsibility is taken for any error, omission or mis-statement. This plan is for illustrative purposes only and should be used as such by any prospective purchaser. The services, systems and appliances shown have not been tested and no guarantee as to their operability or efficiency can be given.
Made with Metropix ©2023



"The Property Experts"



AGENTS NOTE: Every care has been taken with the preparation of these details, but they are for general guidance only. Measurements and dimensions are approximate, and any fixtures or fittings shown in photography does not infer that they are to be included within the sale. The agent has not tested any appliances or supplies and professional verification of these should be sought prior to purchase if required. These particulars do not constitute a contract or part of a contract.