

# Seaward Close



Spacious five bedroom family property

Attractive position within cul-de-sac with lovely open outlook

Useful garage conversion delivering flexible accommodation

Spacious lounge and large, open-plan kitchen/diner

'Master' with modern ensuite

**£279,995**



Multi-Award Wining

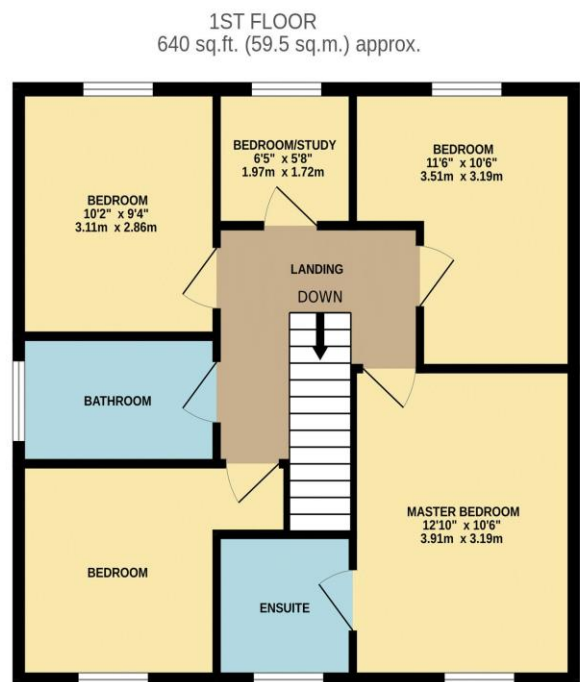
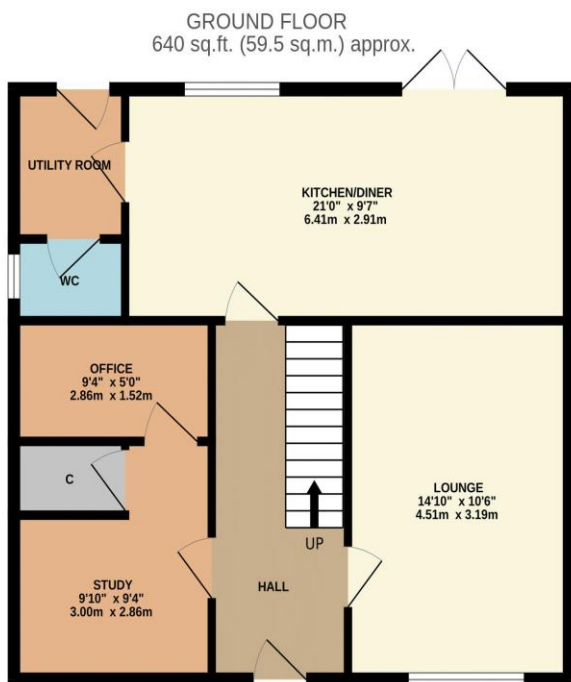




Built by Persimmon to this spacious, five bedroom design, this impressive family property enjoys a pleasant position with a delightful open outlook to the front, a feature that will no doubt prove attractive. Sitting in a quiet cul-de-sac, with double width drive, front garden and lovely enclosed rear garden.

Internally, the garage has seen a conversion that allows a great home study, and former treatment room for a beauty therapist, illustrating the flexible use that it offers, with the ground floor also delivering an entrance hall, spacious lounge, large open-plan kitchen/diner, utility and cloakroom/WC. The first floor brings the five bedrooms, the generous 'Master' benefiting from and a modern ensuite, complemented by the separate family bathroom.

Ingleby Homes recommended.



TOTAL FLOOR AREA: 1281 sq.ft. (119.0 sq.m.) approx.

Whilst every attempt has been made to ensure the accuracy of the floorplan contained here, measurements of doors, windows, rooms and any other items are approximate and no responsibility is taken for any error, omission or mis-statement. This plan is for illustrative purposes only and should be used as such by any prospective purchaser. The services, systems and appliances shown have not been tested and no guarantee as to their operability or efficiency can be given.  
Made with Metropix ©2023

# “The Ingleby Barwick Experts”







Tenure: Freehold

Council Tax Band: D

EPC Rating: B



AGENTS NOTE: Every care has been taken with the preparation of these details, but they are for general guidance only. Measurements and dimensions are approximate, and any fixtures or fittings shown in photography does not infer that they are to be included within the sale. The agent has not tested any appliances or supplies and professional verification of these should be sought prior to purchase if required. These particulars do not constitute a contract or part of a contract.