

Pomeroy Drive



Executive, 'Bond' design built by Charles Church

Five bedrooms, four doubles with fitted robes

Full-depth lounge, dining/sitting room and separate kitchen/diner/family space

Impressive and spacious throughout

Corner position within favoured Rings area

£435,000



Multi-Award Wining

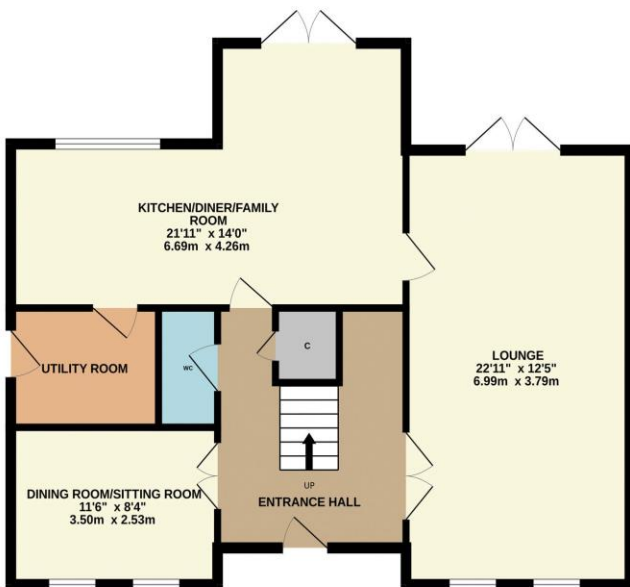


Built to the executive 'Bond' design by Charles Church, this handsome, double fronted, five bedroom property is a great example of its kind. Enjoying a great corner position within this favoured 'Rings' area of Ingleby Barwick, moments from the 'Dene' and delightful river walks, with front gardens, westerly rear garden and detached double garage.

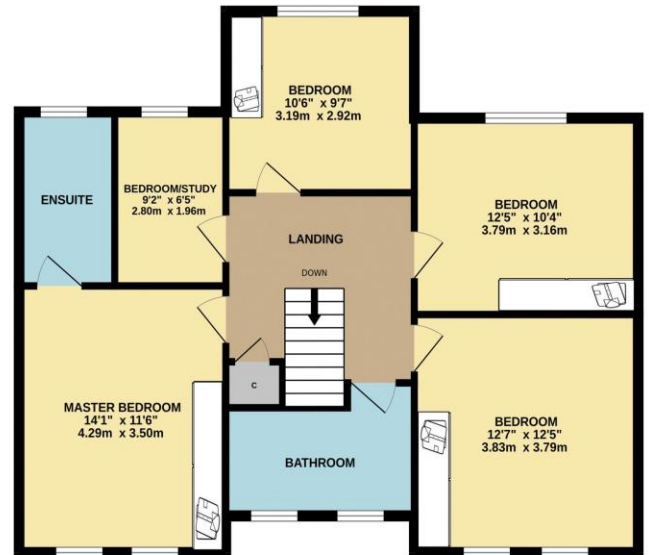
Internally, the impressive space is deserving of inspection. Modern and stylish throughout, with the extensive ground floor delivering an entrance lobby, cloakroom/WC, full depth living room, separate sitting/dining room, and large, open-plan kitchen/diner/family room with utility off. The first floor boasts five bedrooms, the four doubles all enjoying built-in robes and 'Master' with full bathroom ensuite, separate four-piece suite family bathroom.

The rear garden is fully fence enclosed, laid mainly to a well tended lawn with stocked borders. A paved path adjoins the near-end patio to the garage, within which you will find a fantastic home bar/games room, provided by way of a partial garage conversion, with 'French' doors accessing.

GROUND FLOOR



1ST FLOOR



Whilst every attempt has been made to ensure the accuracy of the floorplan contained here, measurements of doors, windows, rooms and any other items are approximate and no responsibility is taken for any error, omission or mis-statement. This plan is for illustrative purposes only and should be used as such by any prospective purchaser. The services, systems and appliances shown have not been tested and no guarantee as to their operability or efficiency can be given.
Made with Metropix ©2023

“The Ingleby Barwick Experts”





Tenure: Freehold

Council Tax Band: F

EPC Rating: B



AGENTS NOTE: Every care has been taken with the preparation of these details, but they are for general guidance only. Measurements and dimensions are approximate, and any fixtures or fittings shown in photography does not infer that they are to be included within the sale. The agent has not tested any appliances or supplies and professional verification of these should be sought prior to purchase if required. These particulars do not constitute a contract or part of a contract.