



- Outstanding, executive five bedroom property
- Stylish and especially impressive throughout
- Stunning, 33ft kitchen/diner/family space
- Five bedrooms, three with robes, two enjoying en-suite facilities
- Generous plot, ample parking, double garage

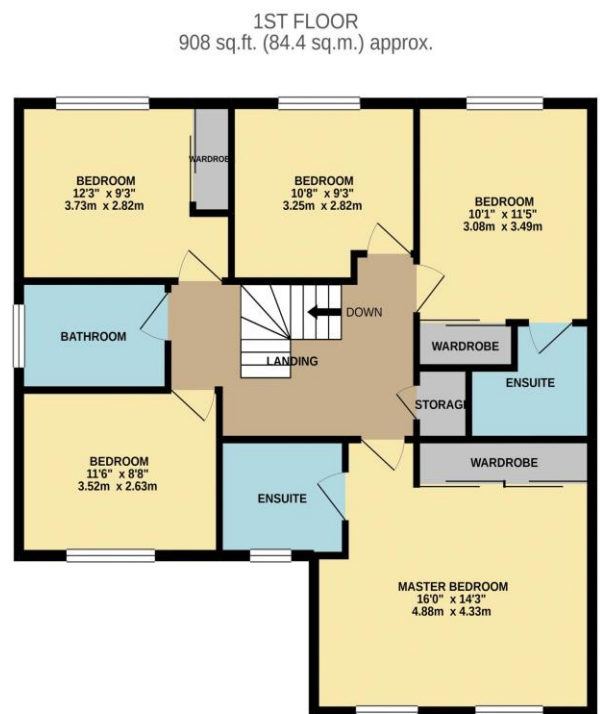
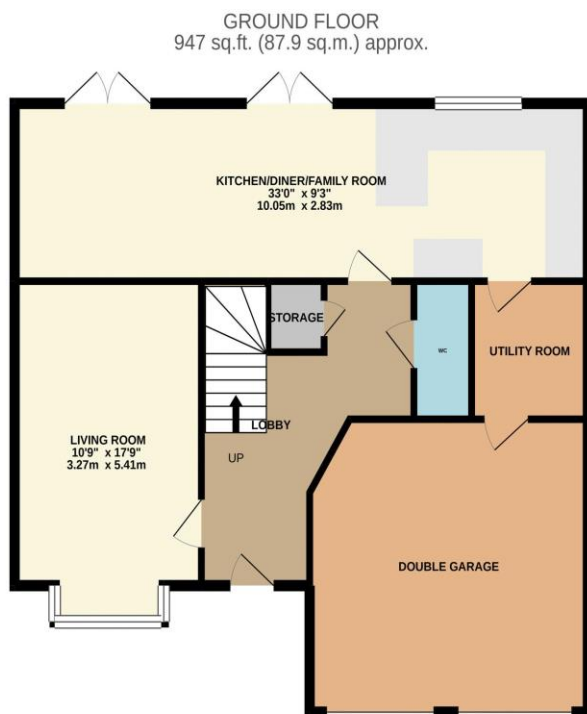


Multi-Award Wining



Stunning! This outstanding, executive property is presented to an impeccable standard, offering especially generous, and professionally styled accommodation throughout. The superb 33ft kitchen/diner/family space, impressive bathrooms and enviable plot, are all 'Stand Out' features, within this large family home that is packed with quality and attention to detail. The owners have commissioned a modern 'Glass & Oak' staircase that meets you upon entrance along with the 'Marble' floor tiles, with security cameras, 'Nest' controlled heating, quality flooring and fitted robes being amongst other benefits worth noting.

The fabulous plot boasts a landscaped frontage, with large block paved drive, double garage, 'astro turf' front lawn and generous rear garden with built in lighting. Internally, the fantastic accommodation, very briefly comprises an entrance lobby, cloakroom/WC, lounge with bespoke 'Granite & Marble' fireplace, kitchen/diner/family room with utility off to the ground floor. The equally impressive first floor delivers five great bedrooms, three with robes, whilst the particularly large 'Master' enjoys a stylish en-suite, with a further en-suite – 'both with Porcelonosa tiles, benefitting bedroom two, separate family bathroom. This really is a superb family home!



TOTAL FLOOR AREA: 1855 sq.ft. (172.3 sq.m.) approx.

Whilst every attempt has been made to ensure the accuracy of the floorplan contained here, measurements of doors, windows, rooms and any other items are approximate and no responsibility is taken for any error, omission or mis-statement. This plan is for illustrative purposes only and should be used as such by any prospective purchaser. The services, systems and appliances shown have not been tested and no guarantee as to their operability or efficiency can be given.
Made with Metropix ©2021





**INGLEBY
HOMES**
SALES & LETTINGS

www.ingleby-homes.co.uk

01642 671025

AGENTS NOTE: Every care has been taken with the preparation of these details, but they are for general guidance only. Measurements and dimensions are approximate, and any fixtures or fittings shown in photography does not infer that they are to be included within the sale. The agent has not tested any appliances or supplies and professional verification of these should be sought prior to purchase if required. These particulars do not constitute a contract or part of a contract.