



RESIDENCE

140 Murray Drive, Stonehouse, ML9 3NH

www.residenceestateagents.co.uk



Viewing by appointment with Residence Strathaven
T: 01357 572222 | E: strathaven@residenceestateagents.co.uk | A: 3 Bridge Street, Strathaven, ML10 6AN





2 Bedrooms | 1 Public Rooms | 1 Bathrooms

This beautifully modernised two bedroom, first floor flat on Murray Drive offers stylish and contemporary living. Finished to a high standard throughout, the property boasts new flooring that enhances it's fresh modern feel.

The highlight of the home is the large open-plan lounge and dining area, a bright and versatile space perfect for both relaxing and entertaining. The bathroom has been fully renovated with a sleek contemporary design adding a touch of luxury to everyday living. With its spacious layout and modern finish, this flat is an ideal choice for first-time buyers, downsizers or anyone seeking a turnkey property.

The property boasts a lovely view of the famous sculpted, concrete elephants made by artist Stanley Bonnar during the 1970s, a well loved landmark in Stonehouse!



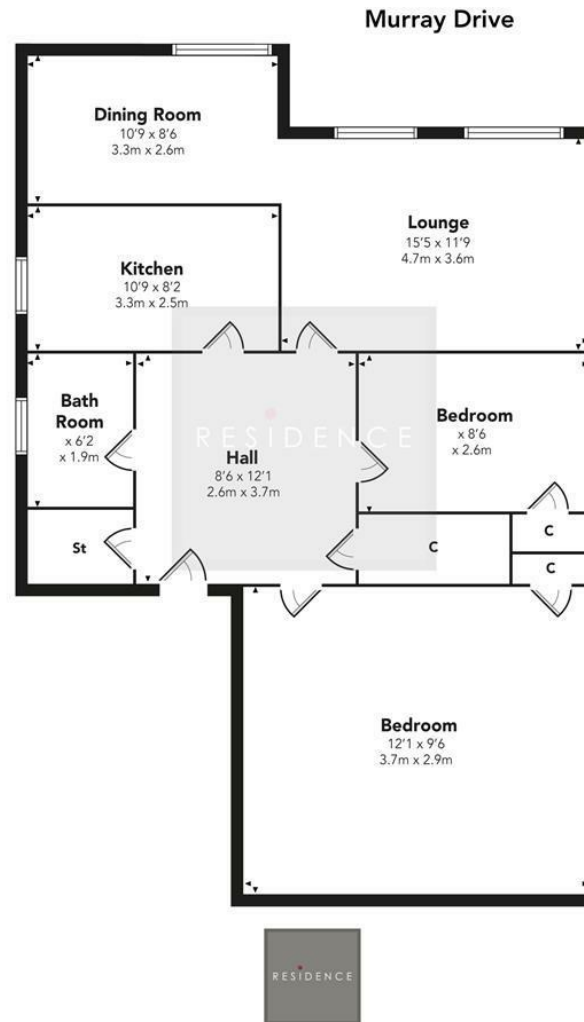
Stonehouse is a popular semi-rural village set just a short distance from Strathaven, the M74 motorway link and Larkhall train station making it a popular location for those who commute. The village itself has several high street shops and a choice of bars whilst nearby Strathaven and Larkhall provide a more comprehensive range of shops and supermarkets.

807.29 sq ft | EER = C



RESIDENCE





Floor Plan measurements are approximate and are for illustrative purposes only.
While we do not doubt the floor plans accuracy, we make no guarantee, warranty or representation as to the accuracy and completeness of the floor plan. You or your advisors should conduct a careful, independent investigation of the property to determine to your satisfaction as to the suitability of the property for your space requirements.

Produced by Plush Plans Ltd

We believe these details to be accurate; however, they do not form any part of a contract. Fixtures and fittings are not included unless specified in the enclosed. Photographs are for general information and it must not be inferred that any item is included for sale with the property. All distances and measurements are approximate. Floorplans may not be to scale and are for illustration purposes only.