



RESIDENCE

10 Dunlop Place, Strathaven, ML10 6PU

www.residenceestateagents.co.uk



2 Bedrooms | 1 Public Rooms | 1 Bathrooms

This beautifully finished and recently modernised two-bedroom first floor flat that is conveniently placed within the heart of Strathaven.

Dunlop Place is a popular address, and this lovely home has been significantly improved over the past few years with the bathroom, flooring and kitchen being modernised. The rooms are bright, airy and beautifully decorated whilst additional features include gas central heating, modern internal doors and a mixture of quality floor coverings.

The accommodation comprises bright spacious hallways, contemporary bathroom, large bright lounge that gives access to the fitted kitchen with dining area and two double bedrooms both with storage.

Additional benefits include a hallway storage cupboard and access to communal private parking, making this an attractive home in a sought-after central location for a variety of buyers.

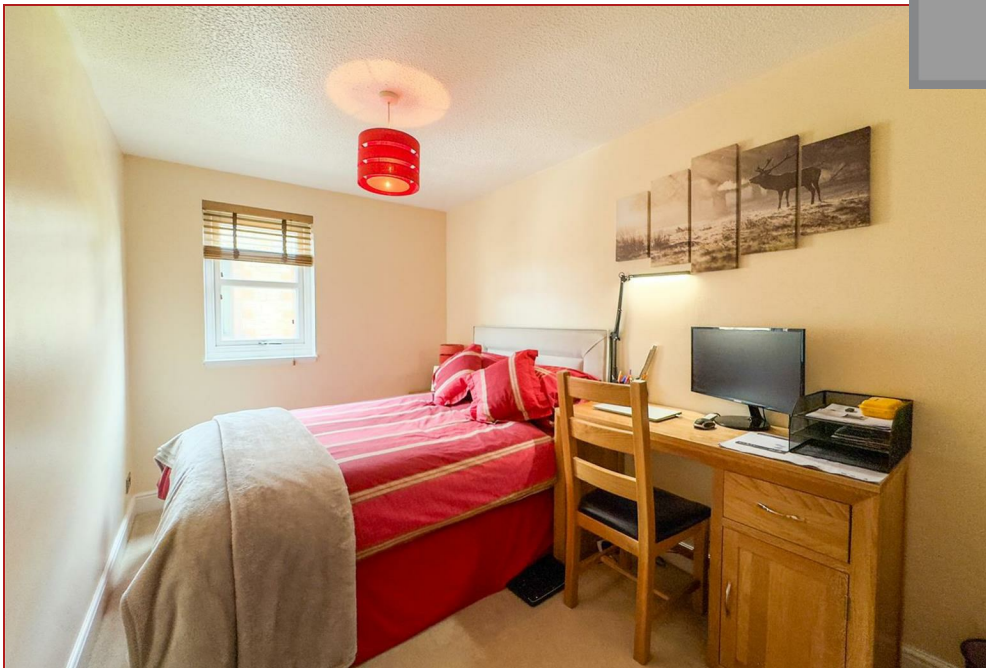


Strathaven is an admired and popular village which offers an excellent mix of shopping facilities and sports facilities including swimming baths, bowling clubs, golf courses, public parks and country walks. The area is highly regarded for its schooling whilst for those commuting, there are excellent road links to the surrounding towns which include East Kilbride, Hamilton and also links to the M74 motorway which connects the M8 motorway to Glasgow and Edinburgh.

667.36 sq ft | EER = B

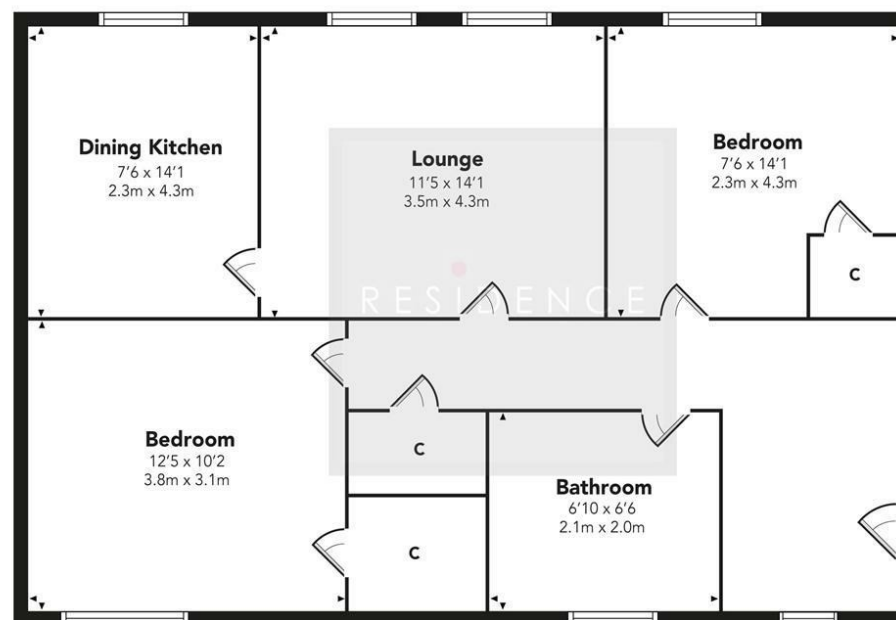


RESIDENCE



Viewing by appointment with Residence Strathaven
T: 01357 572222 | E: strathaven@residenceestateagents.co.uk | A: 3 Bridge Street, Strathaven, ML10 6AN

Dunlop Court



Floor Plan measurements are approximate and are for illustrative purposes only.
While we do not doubt the floor plans accuracy, we make no guarantee, warranty or representation as to the accuracy and completeness of the floor plan. You or your advisors should conduct a careful, independent investigation of the property to determine to your satisfaction as to the suitability of the property for your space requirements.

Produced by Plush Plans Ltd

We believe these details to be accurate; however, they do not form any part of a contract. Fixtures and fittings are not included unless specified in the enclosed. Photographs are for general information and it must not be inferred that any item is included for sale with the property. All distances and measurements are approximate. Floorplans may not be to scale and are for illustration purposes only.