



RESIDENCE

4 Cot Castle View West, Stonehouse, ML9 3RS

www.residenceestateagents.co.uk



Viewing by appointment with Residence Strathaven

T: 01357 572222 | E: strathaven@residenceestateagents.co.uk | A: 3 Bridge Street, Strathaven, ML10 6AN



RESIDENCE





3 Bedrooms | 1 Public Rooms | 1 Bathrooms

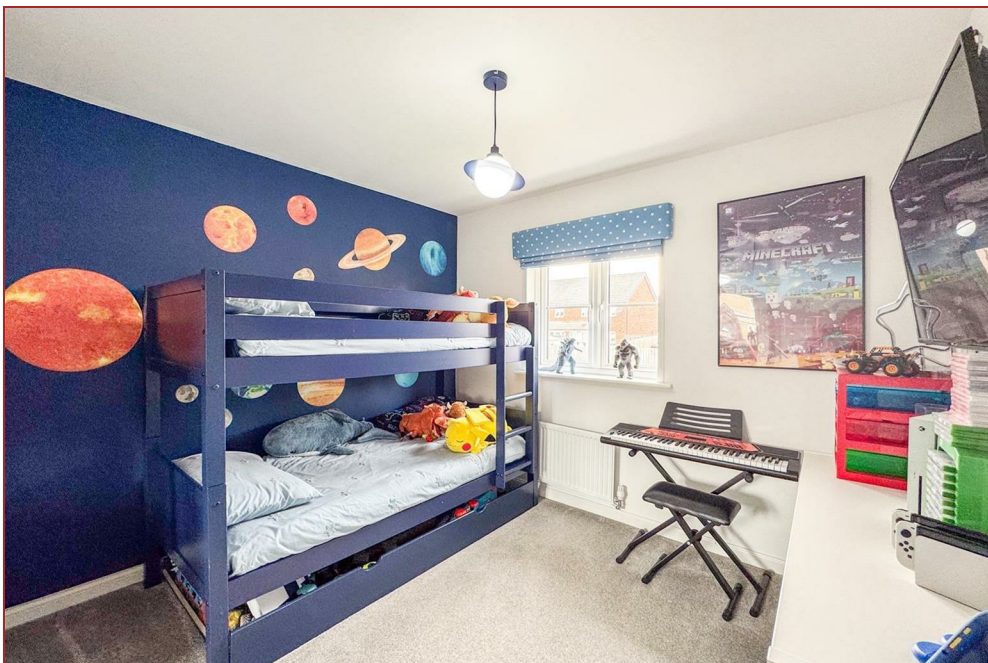
Located within the popular "Lockhart Gardens" development, this beautifully presented Barratt built semi-detached villa has been finished to a very high standard throughout.

Accommodation extends to a welcoming reception hallway with staircase leading to the upper floor level, spacious box bay windowed lounge, cloaks/WC and a stylish dining kitchen fitted with an excellent range of floor and wall mounted units. There are French doors from the kitchen leading to the landscaped rear garden. On the upper floor there are three bedrooms, an attractive contemporary family bathroom with three-piece white suite and shower over the bath.

Features of the property include gas central heating, double glazing, impressive gardens, to the rear with lawn, elevated sun deck, decorative patio and timber fencing.

The enclosed floor plan shall provide a detailed layout of the apartment; however, we recommend inspection to appreciate the scale of accommodation and indeed the standard of internal finish on offer.

Stonehouse is a popular semi-rural village set just a short distance from Strathaven and the M74 motorway link as well as nearby Larkhall train station making it a popular location for those who commute. The village itself has several high street shops and a choice of bars whilst nearby Strathaven and Larkhall provide a more comprehensive range of shops and supermarkets.



925.70 sq ft | EER = B

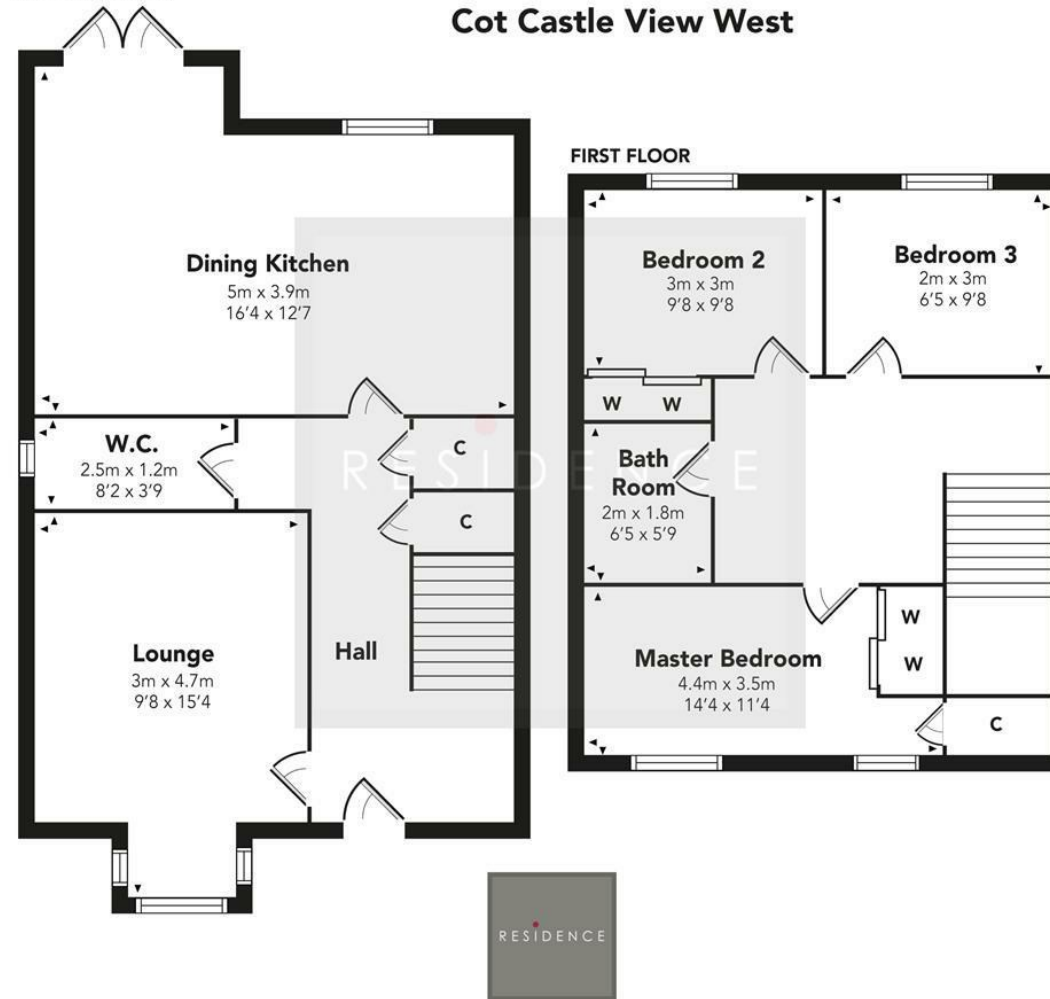


RESIDENCE



GROUND FLOOR

Cot Castle View West



Floor Plan measurements are approximate and are for illustrative purposes only. While we do not doubt the floor plans accuracy, we make no guarantee, warranty or representation as to the accuracy and completeness of the floor plan. You or your advisors should conduct a careful, independent investigation of the property to determine to your satisfaction as to the suitability of the property for your space requirements.

Produced by Plush Plans Ltd

We believe these details to be accurate; however, they do not form any part of a contract. Fixtures and fittings are not included unless specified in the enclosed. Photographs are for general information and it must not be inferred that any item is included for sale with the property. All distances and measurements are approximate. Floorplans may not be to scale and are for illustration purposes only.