



RESIDENCE

5 Crosskirk Crescent, , ML10 6FG

www.residenceestateagents.co.uk



Viewing by appointment with Residence Strathaven

T: 01357 572222 | E: strathaven@residenceestateagents.co.uk | A: 3 Bridge Street, Strathaven, ML10 6AN



RESIDENCE





4 Bedrooms | 3 Public Rooms | 3 Bathrooms

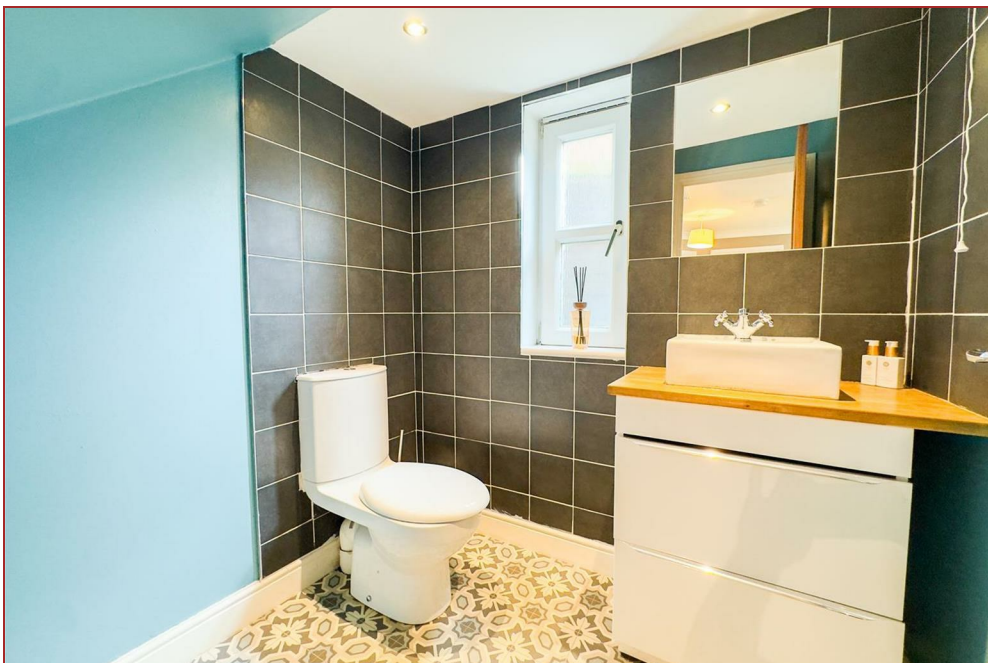
This executive nine-apartment detached family villa was constructed by Bryant Homes and enjoys an excellent position within this highly sought-after residential development.

The property features a range of versatile, bright, and spacious rooms, highlighted by the stunning extended family room at the rear.

An attractive pillared entrance leads to a welcoming reception hallway, with a cloakroom/WC, a bay-windowed lounge, a formal dining room, a TV/sitting room, and a versatile study or downstairs fifth bedroom. The stylish, modern fitted kitchen is integrated with a breakfast area and opens into a generous family/entertaining room, complete with a log burner, bi-fold doors, and striking lantern-style skylight windows. From the kitchen, access is granted to a utility room and the integral double garage. Upstairs, you'll find a large landing, four double bedrooms—including two with en-suites—and a separate family bathroom.

Features of the property include gas central heating, double glazing, and a monobloc driveway providing ample parking for several vehicles. Additionally, the property benefits from a large garage and spacious rear gardens.

Crosskirk Crescent is ideally located just a short distance from the heart of Strathaven. This charming market town lies south of East Kilbride and Hamilton, offering excellent shopping and sporting facilities—including swimming pools, bowling clubs, golf courses, public parks, and scenic country walks. Strathaven boasts a vibrant community with a diverse array of shops and restaurants, making it a wonderful place to call home.



2217.40 sq ft | EER = C



RESIDENCE

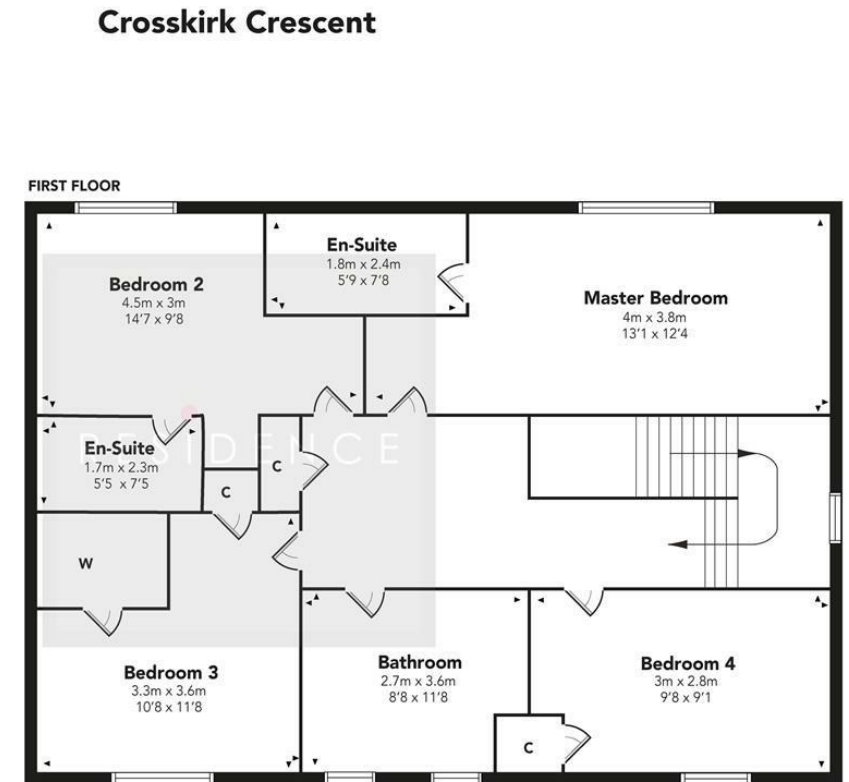
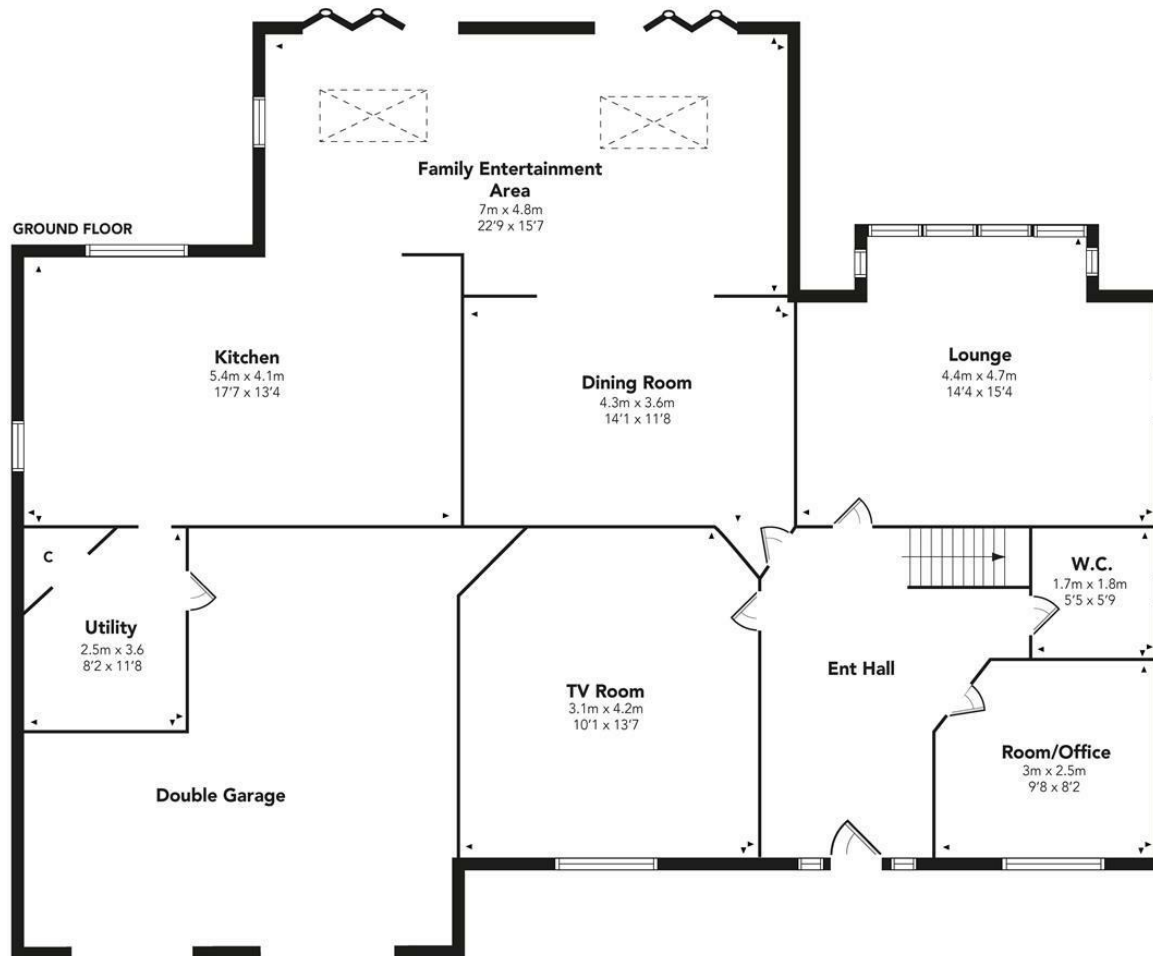




RESIDENCE







Floor Plan measurements are approximate and are for illustrative purposes only. While we do not doubt the floor plans accuracy, we make no guarantee, warranty or representation as to the accuracy and completeness of the floor plan. You or your advisors should conduct a careful, independent investigation of the property to determine to your satisfaction as to the suitability of the property for your space requirements.

Produced by Plush Plans Ltd

We believe these details to be accurate; however, they do not form any part of a contract. Fixtures and fittings are not included unless specified in the enclosed. Photographs are for general information and it must not be inferred that any item is included for sale with the property. All distances and measurements are approximate. Floorplans may not be to scale and are for illustration purposes only.