



RESIDENCE

15 Southend Drive, Strathaven, ML10 6QT

[www.residenceestateagents.co.uk](http://www.residenceestateagents.co.uk)





Viewing by appointment with Residence Strathaven  
T: 01357 572222 | E: [strathaven@residenceestateagents.co.uk](mailto:strathaven@residenceestateagents.co.uk) | A: 3 Bridge Street, Strathaven, ML10 6AN









## 2 Bedrooms | 1 Public Rooms | 1 Bathrooms

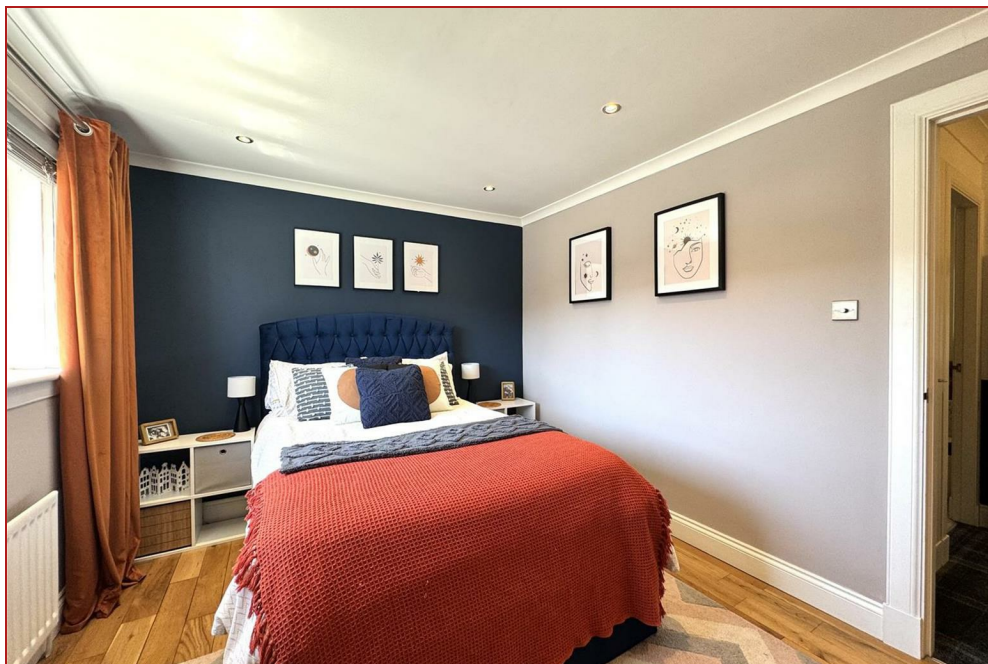
Located within a highly desirable residential cul-de-sac, this beautifully maintained modern mid-terrace villa is an ideal first home and move-in ready. Perfect for a first-time buyer, it offers a welcoming and well-presented living space.

The accommodation features an entrance vestibule that opens into a spacious lounge, complete with a staircase to the upper level. The modern, fitted dining kitchen benefits from double-glazed windows and an exterior door leading to the rear garden, making it perfect for everyday living and entertaining. Upstairs, there are two bedrooms, each equipped with wardrobes, along with a contemporary, tiled family bathroom.

Additional highlights include a monobloc driveway at the front and low-maintenance gardens to the rear, featuring decking and fencing.

A detailed floor plan is available to help you appreciate the thoughtful layout of this comfortable and well-appointed property.

Strathaven is a charming market town situated south of East Kilbride and Hamilton. The area offers excellent shopping options, sports facilities such as swimming pools, bowling clubs, golf courses, as well as public parks and scenic country walks. The town maintains a close-knit village feel, with a variety of shops, restaurants, pubs, cafes, and a large Sainsbury's supermarket in the town centre. It is highly regarded for its excellent school catchment areas. For commuters, there are excellent road links to East Kilbride, Hamilton, and direct access to the M74 motorway, which connects to the M8 and Glasgow.



710.42 sq ft | EER = C

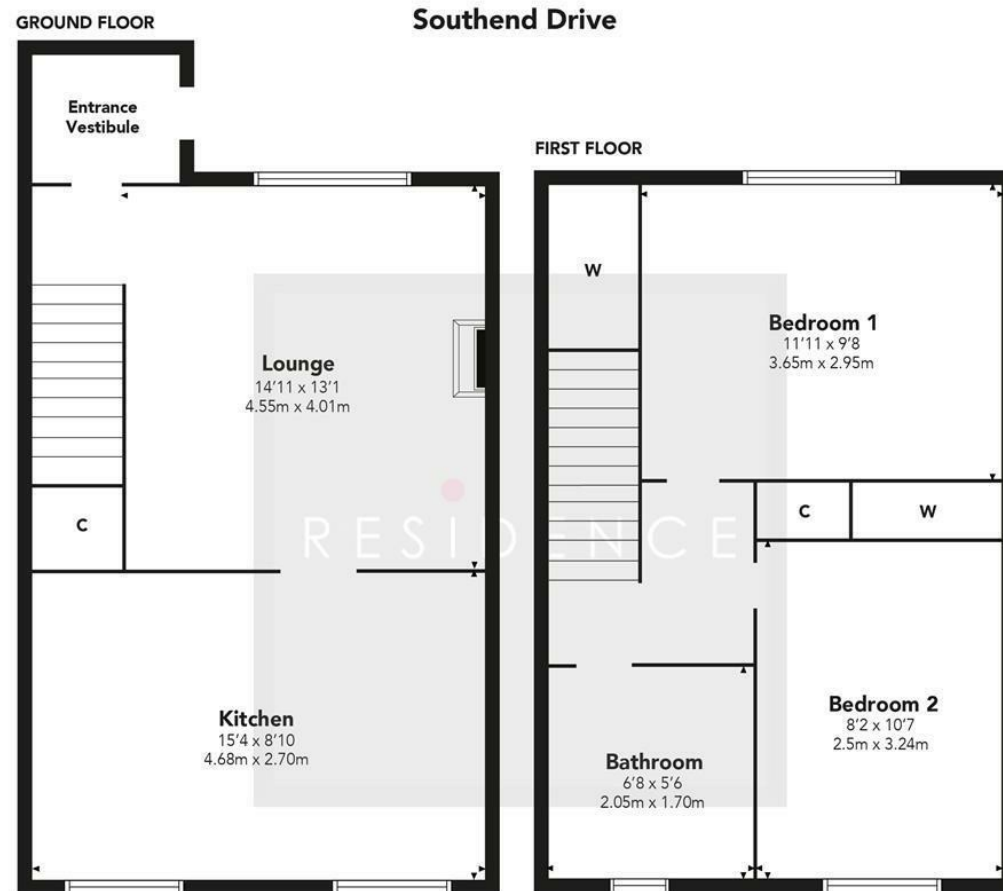




RESIDENCE







Floor Plan measurements are approximate and are for illustrative purposes only.  
While we do not doubt the floor plans accuracy, we make no guarantee, warranty or representation  
as to the accuracy and completeness of the floor plan. You or your advisors should conduct a careful,  
independent investigation of the property to determine to your satisfaction as to the suitability  
of the property for your space requirements.

Produced by Plush Plans Ltd

We believe these details to be accurate; however, they do not form any part of a contract. Fixtures and fittings are not included unless specified in the enclosed. Photographs are for general information and it must not be inferred that any item is included for sale with the property. All distances and measurements are approximate. Floorplans may not be to scale and are for illustration purposes only.