



RESIDENCE

18 Meadowbank Avenue, , ML10 6JS

www.residencestateagents.co.uk



Viewing by appointment with Residence Strathaven

T: 01357 572222 | E: strathaven@residencestateagents.co.uk | A: 3 Bridge Street, Strathaven, ML10 6AN





3 Bedrooms | 3 Public Rooms | 1 Bathrooms

Nestled in the heart of one of Strathaven's most desirable residential areas, this three-bedroom semi-detached home offers spacious and flexible living in a peaceful cul-de-sac setting.

The accommodation comprises of a reception hallway, formal lounge with access to an open plan dining room and modern fitted kitchen, conservatory with aspects and access to the rear gardens, 3 bedrooms and a modern fitted family bathroom.

The property also benefits from a private garage, off-street parking, and a sunny garden, offering both convenience and outdoor enjoyment.

Located on Meadowbank Avenue, this home enjoys close proximity to local amenities, excellent schools, and transport links, making it a rare opportunity in a prime location.



Early viewing is highly recommended to fully appreciate all this exceptional property has to offer.

Strathaven is a market Town located south of East Kilbride and Hamilton. The area offers excellent shopping facilities and sports facilities including swimming baths, bowling clubs, golf courses, public parks and country walks. Strathaven has a typical village community, a wide variety of shops within the town centre including restaurants, pubs, cafes and a large Sainsbury's. The area is highly regarded for its school catchment. For those commuting, there are excellent road links to the surrounding towns which include East Kilbride and Hamilton.

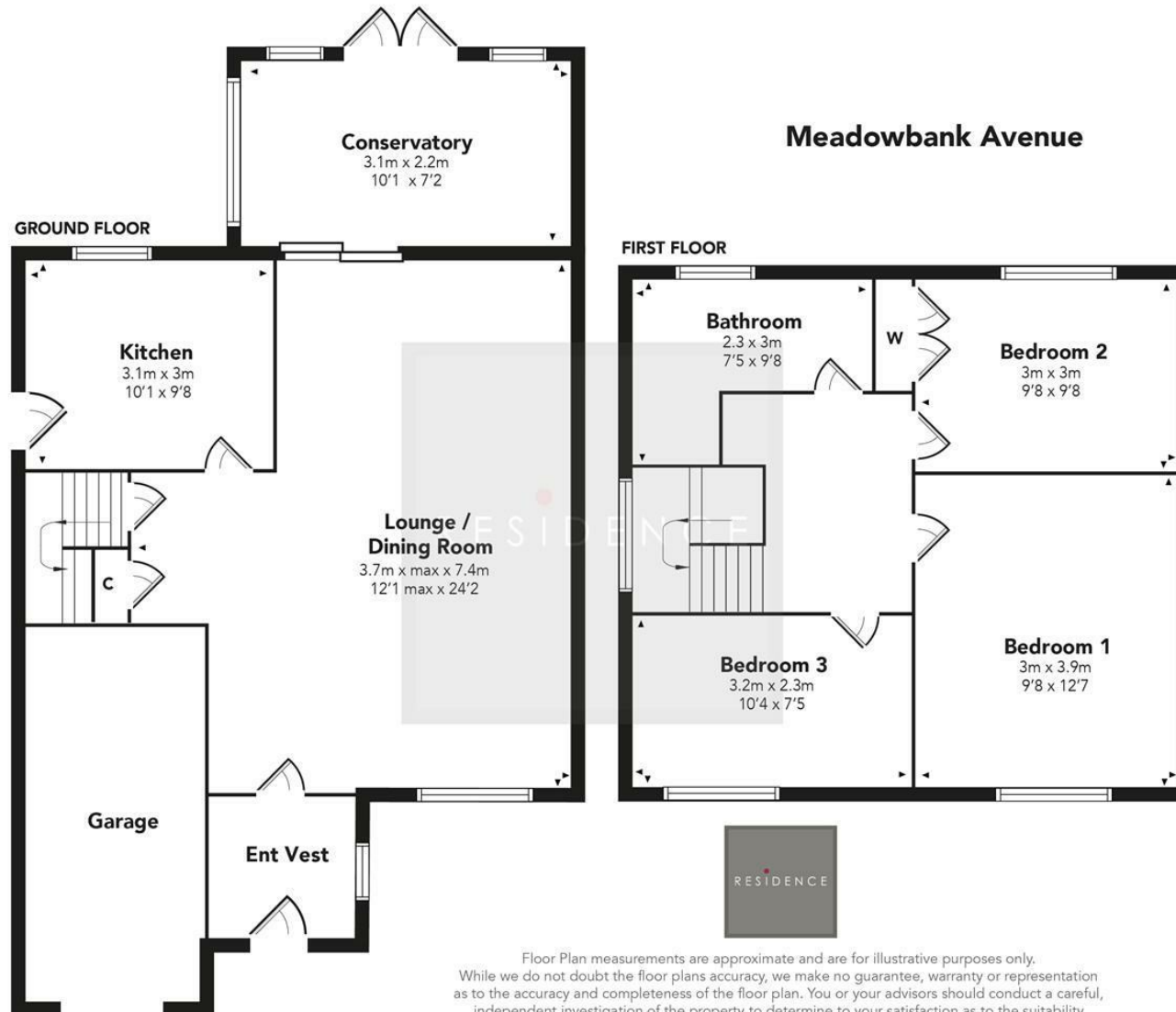
936.46 sq ft | EER = D



RESIDENCE







Floor Plan measurements are approximate and are for illustrative purposes only. While we do not doubt the floor plans accuracy, we make no guarantee, warranty or representation as to the accuracy and completeness of the floor plan. You or your advisors should conduct a careful, independent investigation of the property to determine to your satisfaction as to the suitability of the property for your space requirements.

Produced by Plush Plans Ltd

We believe these details to be accurate; however, they do not form any part of a contract. Fixtures and fittings are not included unless specified in the enclosed. Photographs are for general information and it must not be inferred that any item is included for sale with the property. All distances and measurements are approximate. Floorplans may not be to scale and are for illustration purposes only.