



RESIDENCE

58 Muirhead, Stonehouse, ML9 3HQ

www.residencestateagents.co.uk



Viewing by appointment with Residence Strathaven
T: 01357 572222 | E: strathaven@residenceestateagents.co.uk | A: 3 Bridge Street, Strathaven, ML10 6AN





3 Bedrooms | 2 Public Rooms | 1 Bathrooms

An immaculate three-bedroom semi-detached villa nestled in the peaceful residential development of Muirhead, located within the sought-after village of Stonehouse. This lovely family home offers an abundance of space and comfort, providing well-presented accommodation spread thoughtfully over two levels.

As you step inside, you are greeted by an inviting entrance hallway. The ground floor comprises a spacious, front-facing lounge that is bathed in natural light - this area seamlessly flows into the dining area through wooden French doors, allowing for a perfect blend of entertainment and family gatherings. The dining space provides a lovely social setting that has French Doors leading out to the rear garden and also access into the well-appointed kitchen, from the kitchen, you can access the charming rear garden.

On the upper level, you will find three generously sized bedrooms, the master bedroom having built in wardrobes and the other two bedrooms having excellent storage. Completing the upper floor is a lovely modern family shower room that boasts contemporary fittings.

Externally, the property occupies a spacious plot that enhances its curb appeal. A stunning cherry blossom tree graces the front of the home. To the side of the property, a convenient parking area/driveway for off road parking for multiple cars.

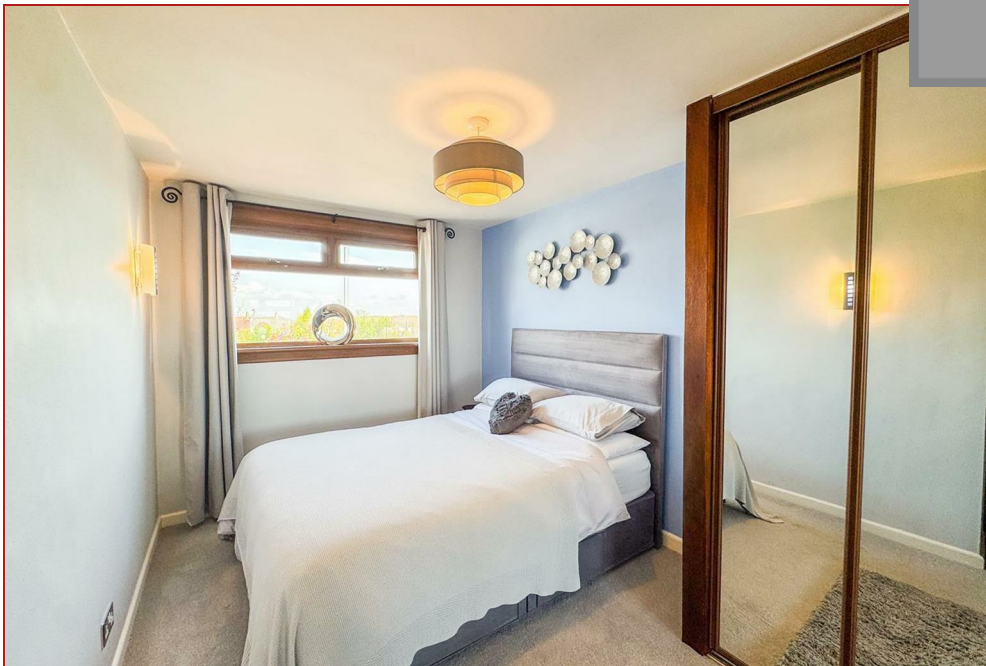
At the rear, you will discover a lovely low-maintenance garden that features a stylish decked area with a peaceful outlook over the surrounding countryside and a large detached garage, providing extra storage space or potential for a workshop or outdoor office.



861.00 sq ft | EER = C



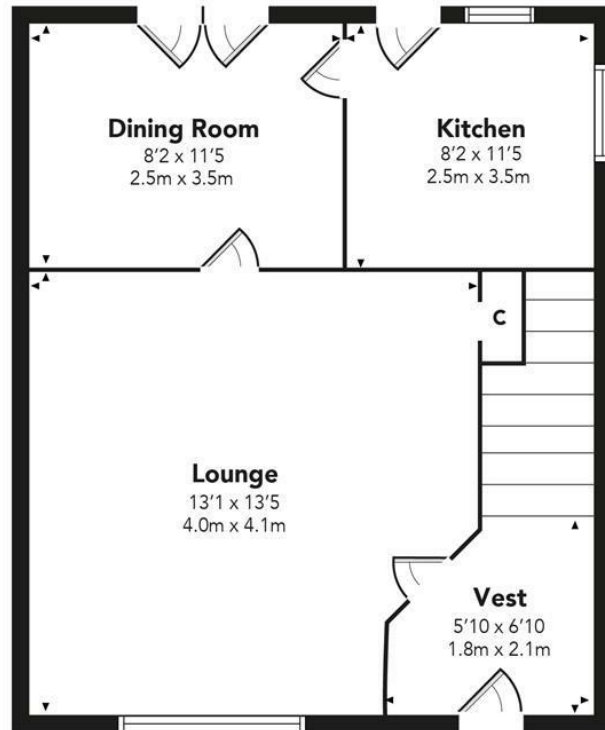
RESIDENCE



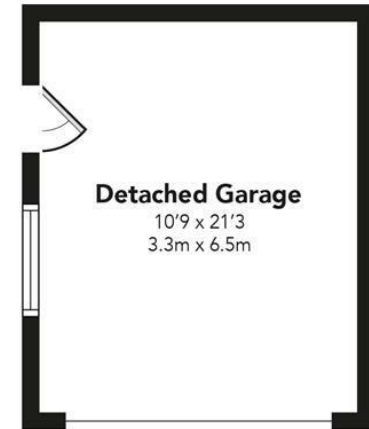
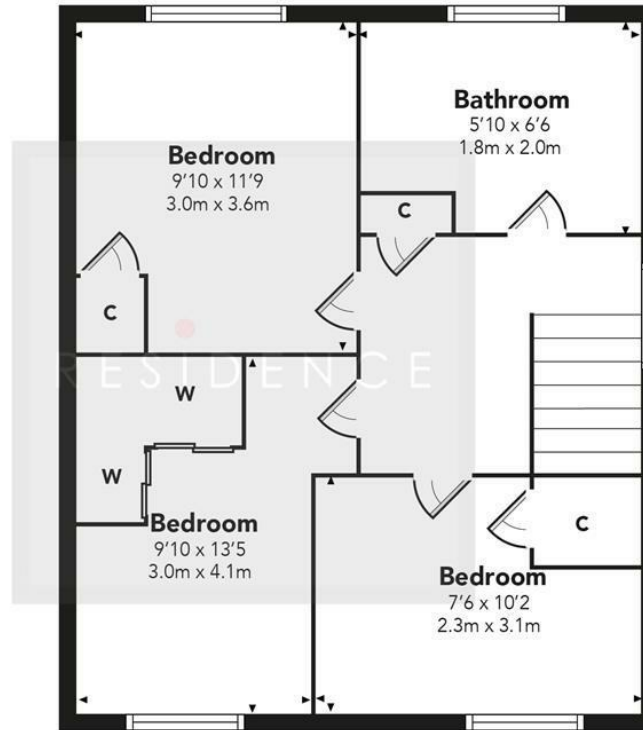


Muirhead

GROUND FLOOR



FIRST FLOOR



Floor Plan measurements are approximate and are for illustrative purposes only. While we do not doubt the floor plans accuracy, we make no guarantee, warranty or representation as to the accuracy and completeness of the floor plan. You or your advisors should conduct a careful, independent investigation of the property to determine to your satisfaction as to the suitability of the property for your space requirements.

Produced by Plush Plans Ltd

We believe these details to be accurate; however, they do not form any part of a contract. Fixtures and fittings are not included unless specified in the enclosed. Photographs are for general information and it must not be inferred that any item is included for sale with the property. All distances and measurements are approximate. Floorplans may not be to scale and are for illustration purposes only.