



RESIDENCE

4 Cherrytree Place, Strathaven, ML10 6JG

www.residenceestateagents.co.uk



Viewing by appointment with Residence Strathaven

T: 01357 572222 | E: strathaven@residenceestateagents.co.uk | A: 3 Bridge Street, Strathaven, ML10 6AN



RESIDENCE





3 Bedrooms | 2 Public Rooms | 1 Bathrooms

This very well-presented detached bungalow is set within a highly regarded address of the Town and offers a deceptively spacious layout of well-proportioned apartments formed all on the one level.

Internally the property has been finished with neutral tones throughout and offers accommodation that consists of; welcoming L-shape reception hallway, spacious lounge with double glazed aspects to front, modern fitted kitchen that has a range of base and wall mounted storage units with worktop surfaces and appliances. There is open plan access to a formal dining room enjoying aspects overlooking the rear gardens. The property has 3 bedrooms, all with fitted wardrobes and a separate fitted family bathroom. Features of the property include gas central heating, double glazing, monoblock driveway and garage. Further features include established gardens to both the front and rear.

Early viewing of this fine family home is highly advised.

Cherrytree Place is a highly desirable residential locale within the market Town of Strathaven. The area offers excellent shopping facilities and sports facilities including swimming baths, bowling clubs, golf courses, public parks and country walks. Strathaven has a typical market town community, a wide variety of shops within the village centre including restaurants, pubs, cafes and a large Sainsbury's. The area is highly regarded for its schooling and for those commuting.



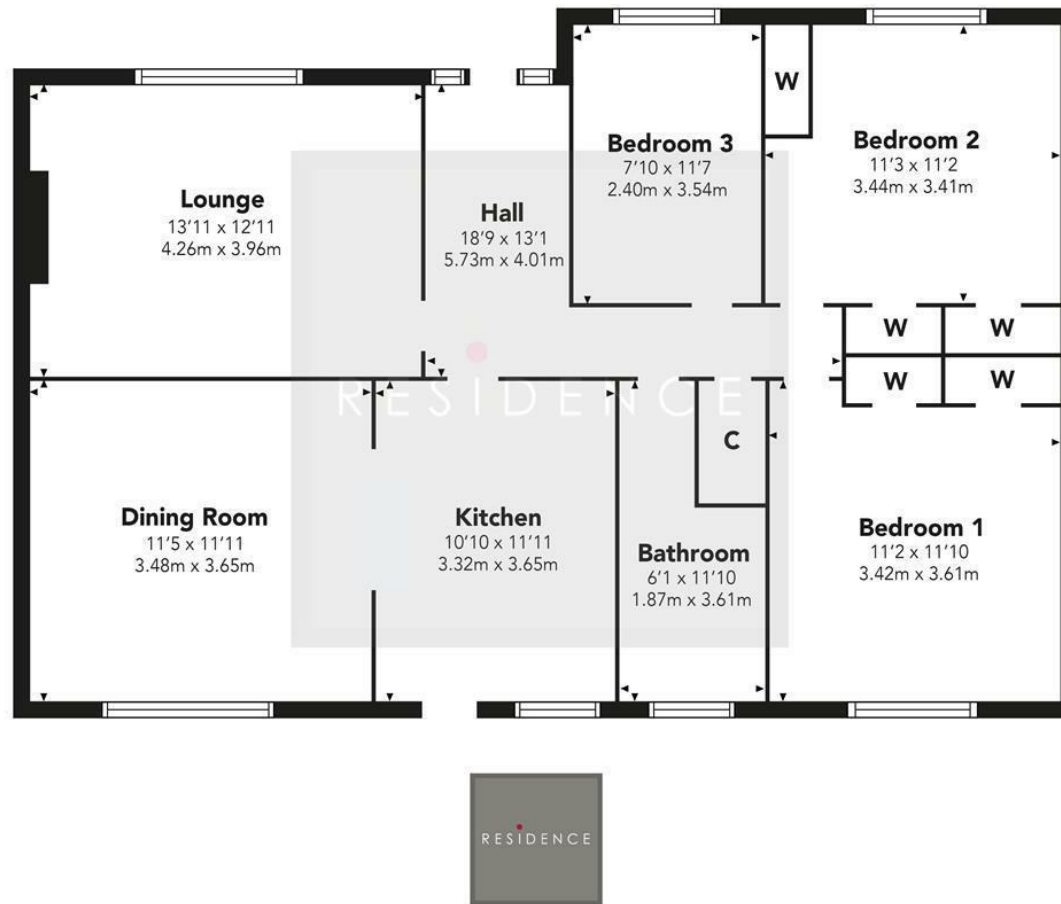
1087.00 sq ft | EER = C



RESIDENCE



Cherry Tree Place



Floor Plan measurements are approximate and are for illustrative purposes only.
While we do not doubt the floor plans accuracy, we make no guarantee, warranty or representation as to the accuracy and completeness of the floor plan. You or your advisors should conduct a careful, independent investigation of the property to determine to your satisfaction as to the suitability of the property for your space requirements.

Produced by Plush Plans Ltd

We believe these details to be accurate; however, they do not form any part of a contract. Fixtures and fittings are not included unless specified in the enclosed. Photographs are for general information and it must not be inferred that any item is included for sale with the property. All distances and measurements are approximate. Floorplans may not be to scale and are for illustration purposes only.