



RESIDENCE

30 Saddlers Gate, Strathaven, ML10 6US

www.residenceestateagents.co.uk



Viewing by appointment with Residence Strathaven

T: 01357 572222 | E: strathaven@residencestateagents.co.uk | A: 3 Bridge Street, Strathaven, ML10 6AN



2 Bedrooms | 1 Public Rooms | 1 Bathrooms

Located within this desirable residential development only a few minutes out of the Town, this sure to be popular 2 bedroomed main door lower cottage flat.

The property is sure to appeal to either a first-time buyer or someone who is looking to downsize.

The accommodation consists of entrance vestibule, spacious lounge, modern fitted kitchen, 2 bedrooms with wardrobes and a modern fitted family bathroom.

Features of the property include gas central heating, double glazing, driveway and communal gardens.

Saddlers Gate is a popular residential development only 5 minutes away from the Common Green. Strathaven is an admired and popular market Town which offers an excellent mix of shopping facilities and sports facilities including swimming baths, bowling clubs, golf courses, public parks and country walks. The area is highly regarded for its schooling whilst for those commuting, there are excellent road links to the surrounding towns including East Kilbride, Hamilton and also links to the M74 motorway which connects the M8 motorway to Glasgow and Edinburgh.



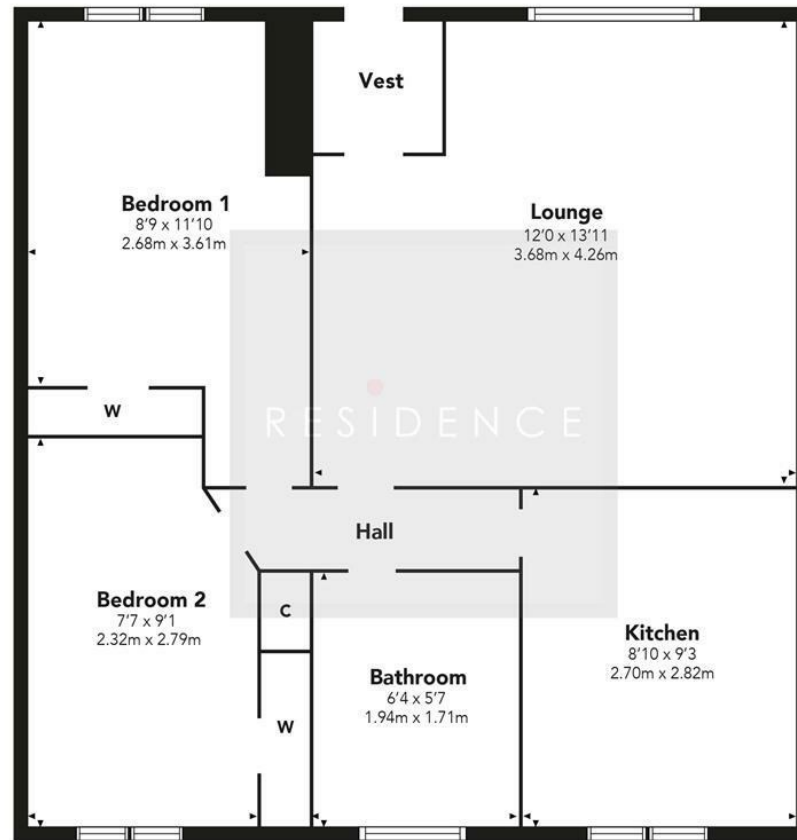
538.00 sq ft | EER = C



RESIDENCE



Saddlers Gate



Floor Plan measurements are approximate and are for illustrative purposes only. While we do not doubt the floor plans accuracy, we make no guarantee, warranty or representation as to the accuracy and completeness of the floor plan. You or your advisors should conduct a careful, independent investigation of the property to determine to your satisfaction as to the suitability of the property for your space requirements.

Produced by Plush Plans Ltd

We believe these details to be accurate; however, they do not form any part of a contract. Fixtures and fittings are not included unless specified in the enclosed. Photographs are for general information and it must not be inferred that any item is included for sale with the property. All distances and measurements are approximate. Floorplans may not be to scale and are for illustration purposes only.