



RESIDENCE

RESIDENCE

11 Lambhill Steadings, Strathaven, ML10 6XF

[www.residencestateagents.co.uk](http://www.residencestateagents.co.uk)



Viewing by appointment with Residence Strathaven

T: 01357 572222 | E: [strathaven@residencestateagents.co.uk](mailto:strathaven@residencestateagents.co.uk) | A: 3 Bridge Street, Strathaven, ML10 6AN



## 4 Bedrooms | 2 Public Rooms | 3 Bathrooms

This beautifully presented and superb sized mid terraced townhouse sits within a lovely quiet development on the outskirts of Strathaven with wonderful views over the adjacent countryside.

This lovely sized home was built circa 2016 and is formed over three floors with great views from the rear. The rooms are particularly versatile, well proportioned, tastefully decorated and have a mixture of wooden, laminate and carpeted flooring with additional features including LPG heating and double glazing. The bedrooms have generous built in wardrobes.

Located within a small hamlet of 12 homes, this is one of the larger style homes with circa 1829 sq ft of living space formed over three floors comprising reception hall, lounge which is open plan to the dining room (French doors to the rear gardens), a cloakroom wc, modern kitchen with a range of integrated appliances, four generous sized bedrooms, two en-suites and a family bathroom.

The gardens are private, well kept and enjoy uninterrupted views over the countryside and towards Loudon Hill in the distance. There's a lawn, raised beds, a patio and a shed.



1829.86 sq ft | EER = D

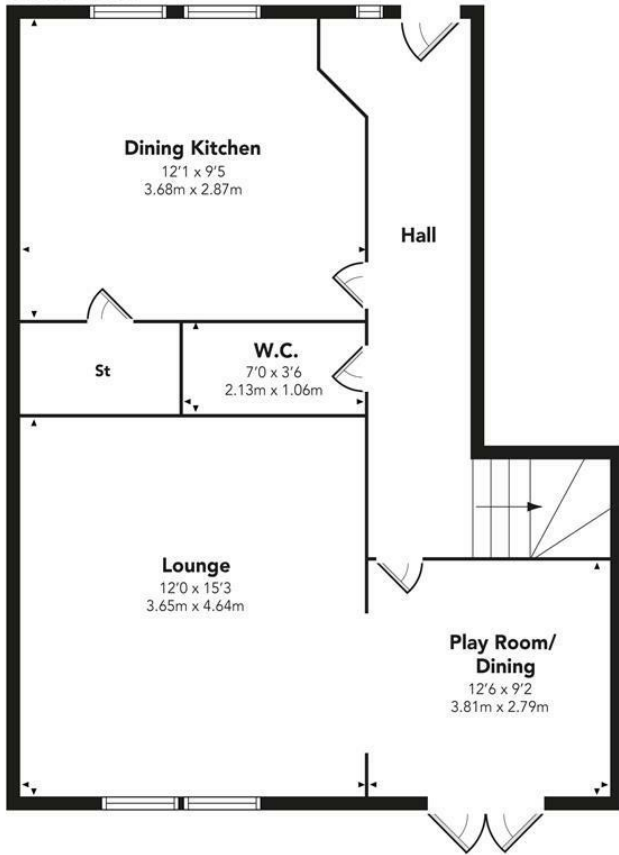


RESIDENCE

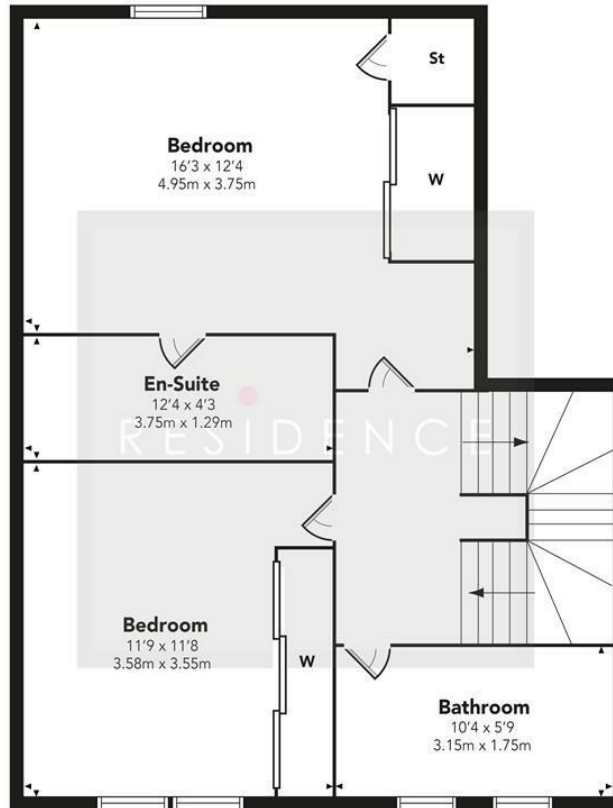


## Lambhill Steadings

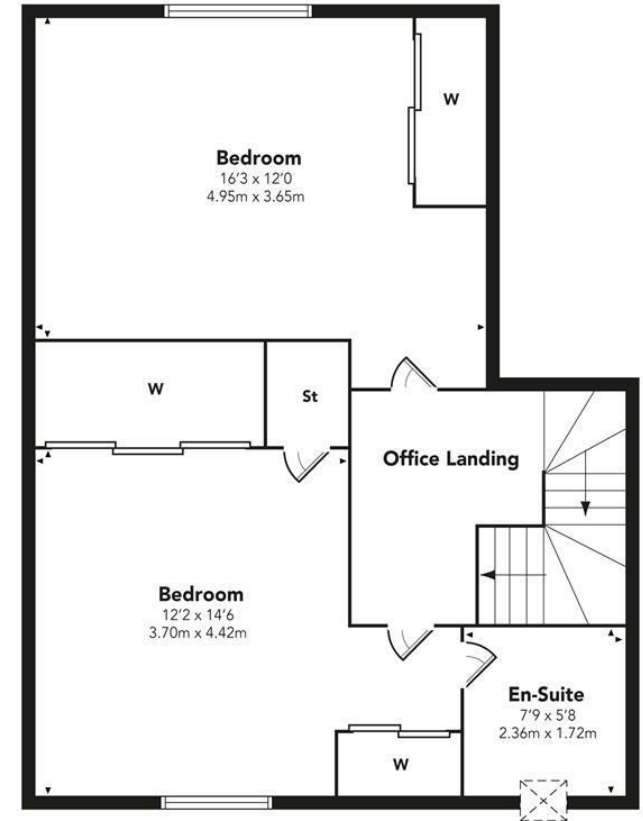
GROUND FLOOR



FIRST FLOOR



SECOND FLOOR



Floor Plan measurements are approximate and are for illustrative purposes only. While we do not doubt the floor plans accuracy, we make no guarantee, warranty or representation as to the accuracy and completeness of the floor plan. You or your advisors should conduct a careful, independent investigation of the property to determine to your satisfaction as to the suitability of the property for your space requirements.

Produced by Plush Plans Ltd

We believe these details to be accurate; however, they do not form any part of a contract. Fixtures and fittings are not included unless specified in the enclosed. Photographs are for general information and it must not be inferred that any item is included for sale with the property. All distances and measurements are approximate. Floorplans may not be to scale and are for illustration purposes only.