



RESIDENCE

St Oswalds Chapel Farm High Kype Road, Strathaven, ML10 6PW

www.residenceestateagents.co.uk



Viewing by appointment with Residence Strathaven

T: 01357 572222 | E: strathaven@residenceestateagents.co.uk | A: 3 Bridge Street, Strathaven, ML10 6AN



RESIDENCE



4 Bedrooms | 3 Public Rooms | 2 Bathrooms



****CLOSING DATE WEDNESDAY 10TH JULY 2024 @ 12PM**** St Oswalds Chapel Farm, is a beautifully presented converted farmhouse set within circa 4.2 acres of stunning gardens, paddock and fields. The property enjoys a wonderful, semi-rural setting on the periphery of Strathaven which is packed with an abundance of wildlife.

This truly beautiful home which dates as far back as 1719 has been finished to a very high standard throughout and features a variety of outbuildings, sheds, outside stores and garages, all of which can only be fully appreciated upon both external and internal inspection.

The property offers an array of spacious, versatile, bright and airy apartments which in their entirety consists of, entrance porch with access to a home office/study or 5th bedroom, an extensive welcoming hallway with staircase to the upper floor level, gorgeous formal lounge with focal point multi fuel stove set within a striking fireplace and surround. Lovely fitted kitchen with centre breakfasting island and Aga, open plan family room with bi-fold doors to garden. Corner appointed log burner, utility/boot room, modern fitted shower room with feature stained glass window and a separate and stylish downstairs modern fitted family bathroom. The home also offers 4 bedrooms, 2 of which are located on the ground floor level.

Features of the property include a modern oil fired central heating system and double glazing.

Further features include a secluded private driveway, stunning gardens with burn and pond, adjoining paddock, field and various outbuildings, garages and outside stores which all offer excellent potential.

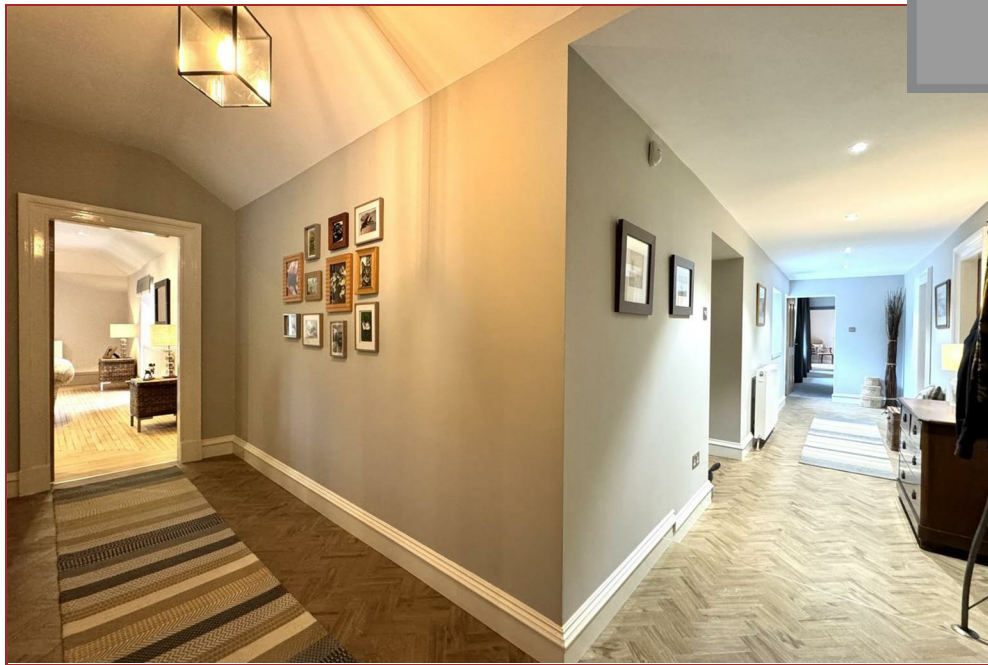
High Kype Road is a country Road on the outskirts of the Town and neighbouring the village of Sandford. Strathaven is a desirable market Town located south of East Kilbride and Hamilton. The area offers excellent shopping and sports facilities including swimming baths, bowling clubs, golf courses, public parks and country walks.



2626.00 sq ft | EER = D



RESIDENCE

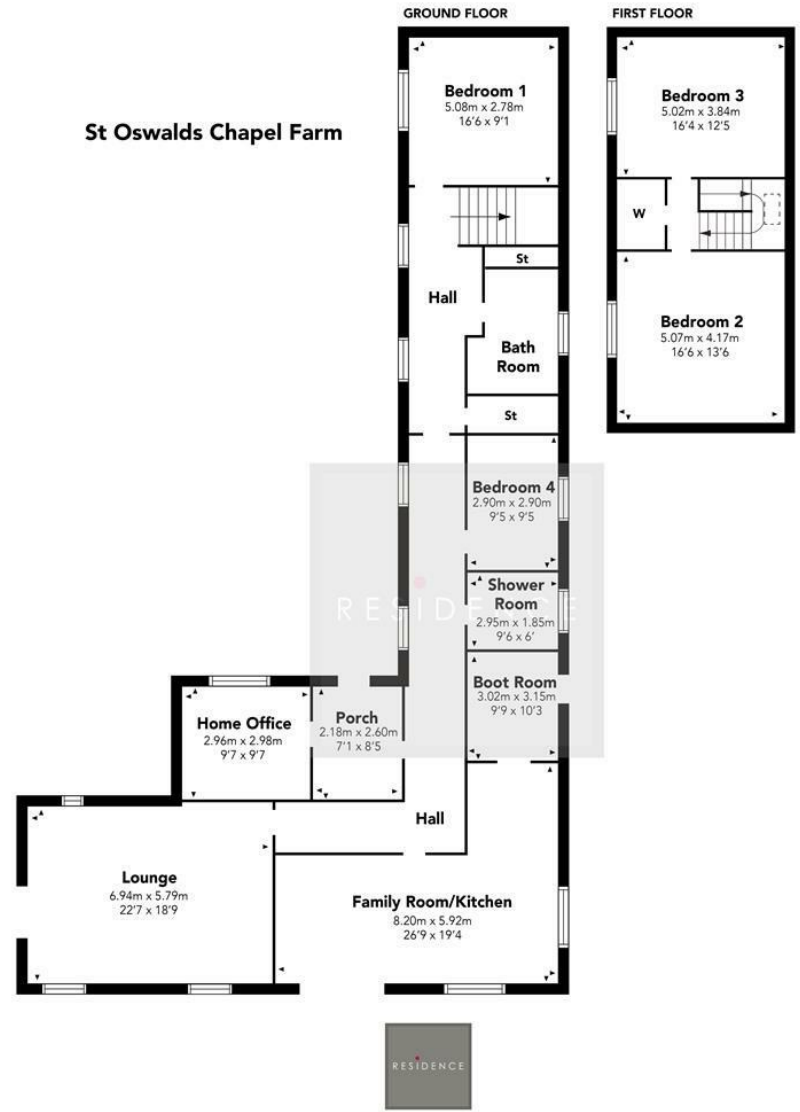




RESIDENCE



St Oswalds Chapel Farm



Floor Plan measurements are approximate and are for illustrative purposes only. While we do not doubt the floor plans accuracy, we make no guarantee, warranty or representation as to the accuracy and completeness of the floor plan. You or your advisors should conduct a careful, independent investigation of the property to determine to your satisfaction as to the suitability of the property for your space requirements.
Produced by Plush Plans Ltd

We believe these details to be accurate; however, they do not form any part of a contract. Fixtures and fittings are not included unless specified in the enclosed. Photographs are for general information and it must not be inferred that any item is included for sale with the property. All distances and measurements are approximate. Floorplans may not be to scale and are for illustration purposes only.