



RESIDENCE

27 Threestanes Road, , ML10 6EB

[www.residencestateagents.co.uk](http://www.residencestateagents.co.uk)

Viewing by appointment with Residence Strathaven  
T: 01357 572222 | E: strathaven@residenceestateagents.co.uk | A: 3 Bridge Street, Strathaven, ML10 6AN



We believe these details to be accurate; however, they do not form any part of a contract. Fixtures and fittings are not included unless specified in the enclosed. Photographs are for general information and it must not be inferred that any item is included for sale with the property. All distances and measurements are approximate. Floorplans may not be to scale and are for illustration purposes only.

3 Bedrooms | 1 Public Rooms | 1 Bathrooms

1442.00 sq ft | EER = D

\* Closing Date - Tuesday 30th July 2024 @ 12noon \*

Located within this highly desirable address, only minutes away from all of the town's local amenities including Strathaven Park and Kirkland Park Primary school, this deceptively spacious and successfully extended semi-detached villa is a wonderful family home.

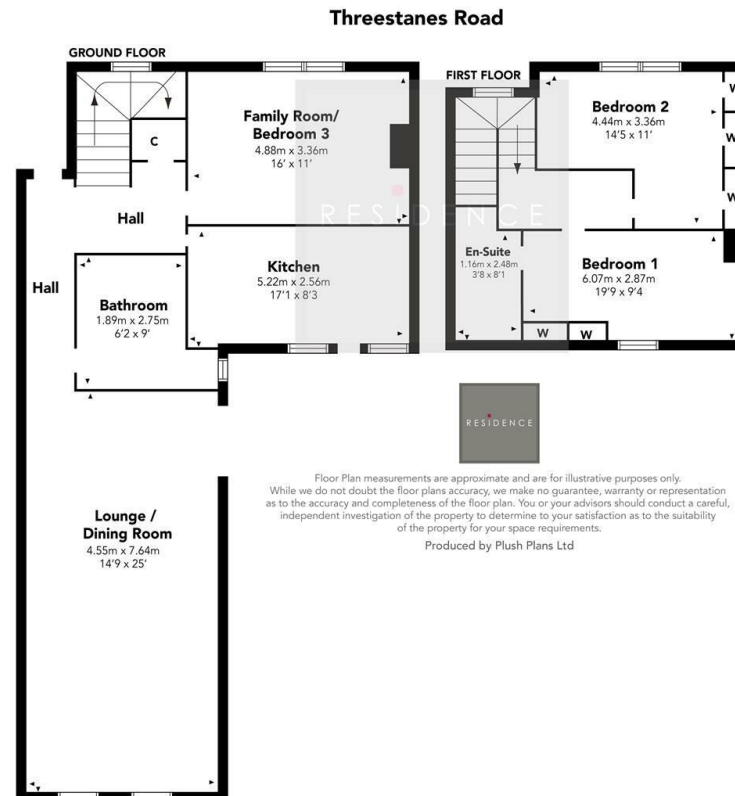
The home occupies an excellent position with good size, maintained gardens that also include a sizable monobloc driveway providing plenty of off-road parking.

The property offers excellent versatility and the accommodation comprises, welcoming reception hallway, generously proportioned lounge/dining room with aspects to rear and double-glazed French doors, fitted kitchen with a range of base and wall mounted storage units, downstairs family bathroom. The property has 3 double sized bedrooms, one of which is located on the ground floor level and is currently being utilised as an additional family room. The master bedroom upstairs has its own en-suite shower room.

Features of the home include gas central heating and double glazing.

The enclosed floor plan shall provide a detailed layout of this spacious property however we recommend inspection to appreciate the scale of accommodation on offer.

Threestanes Road is a highly sought after locale within the town. Strathaven is a market Town located south of East Kilbride and Hamilton. The area offers excellent shopping facilities and sports facilities including swimming baths, bowling clubs, golf courses, public parks and country walks. Strathaven has a typical village community, a wide variety of shops within the town centre including restaurants, pubs, cafes and a large Sainsbury's. The area is highly regarded for its school catchment.





RESIDENCE

