



RESIDENCE

Loudoun Hill Inn Strathaven Road, Darvel, KA17 0LX

[www.residencestateagents.co.uk](http://www.residencestateagents.co.uk)



Viewing by appointment with Residence Strathaven

T: 01357 572222 | E: [strathaven@residencestateagents.co.uk](mailto:strathaven@residencestateagents.co.uk) | A: 3 Bridge Street, Strathaven, ML10 6AN





## 8 Bedrooms | 3 Public Rooms | 8 Bathrooms

A wonderful opportunity to purchase the locally admired Loudoun Hill Inn and the adjacent restaurant.

The premises are sure to appeal to a wide spectrum, and offer various uses. The inn is a substantial traditional dwelling with a large selection of living space and bedrooms. The ground floor comprises of an entrance vestibule, reception hallway, 2 public rooms, kitchen, utility room, bathroom, 2 bedrooms with en-suites, additional toilets and a conservatory. The 1st floor offers 3 guest bedrooms all with en-suite shower rooms whilst a separate entrance leads to a self-contained 3-bedroom duplex flat with hallway, living room, kitchen, bathroom, 3 beds and a shower room.

The adjacent restaurant is a large, detached building with outside seating area, entrance area, main seating and dining room with kitchen area, office, wc, stores and 3 sets of toilets.

The premises offer excellent parking facilities which could be developed into large garden grounds.

Early viewing is strongly advised in order to fully appreciate the size, setting and huge potential on offer.

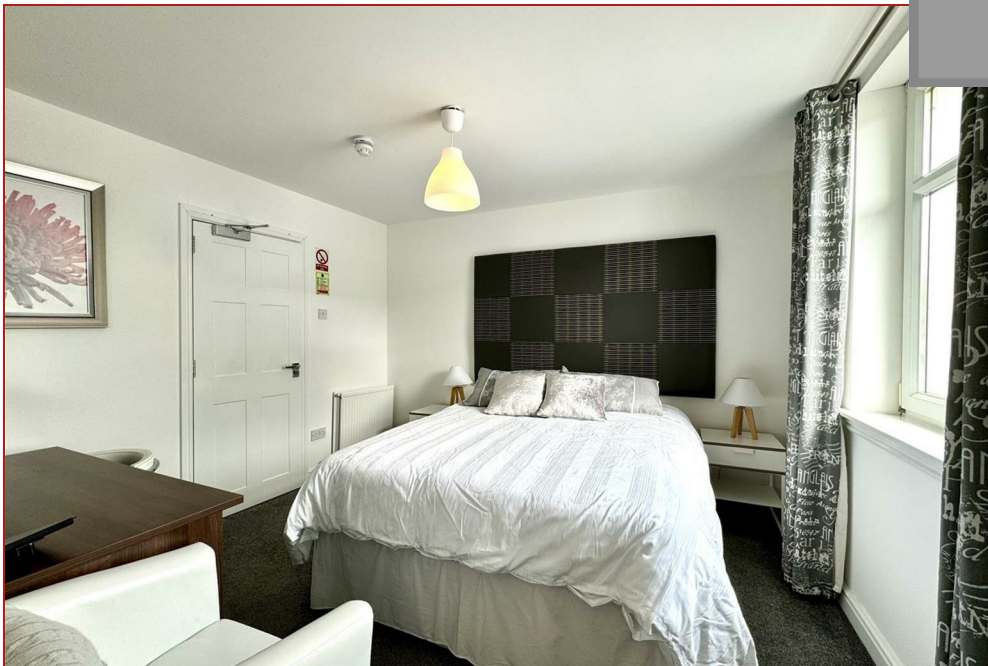
Darvel has a range of local amenities including shops and schools, Tesco and Sainsburys in neighbouring towns Galston and Strathaven whilst the market town of Kilmarnock lies close by and offers a further range of amenities including excellent supermarket and retail shopping, transport and recreational facilities. For the commuter the upgraded M77 offers direct links to many commercial centres within the central belt.



sq ft | EER =



RESIDENCE

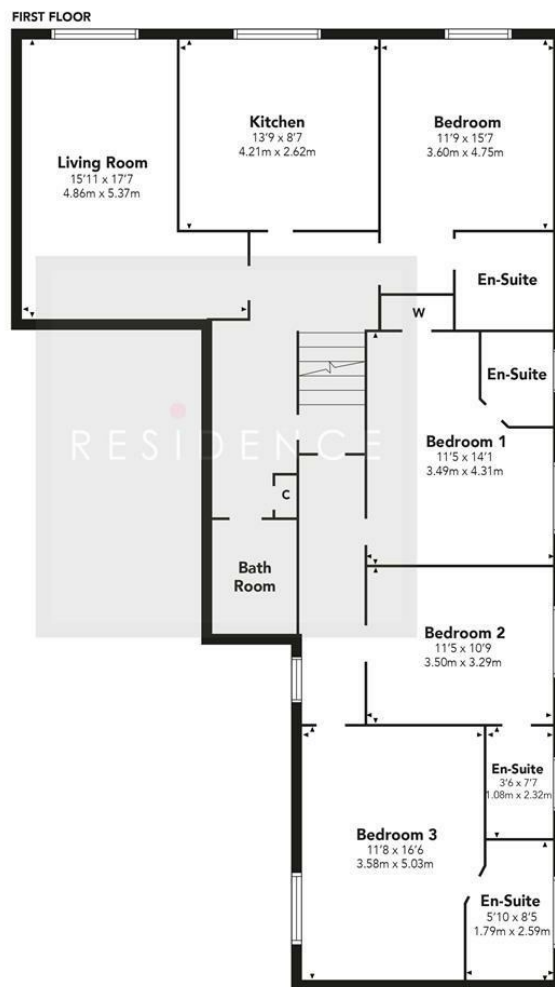
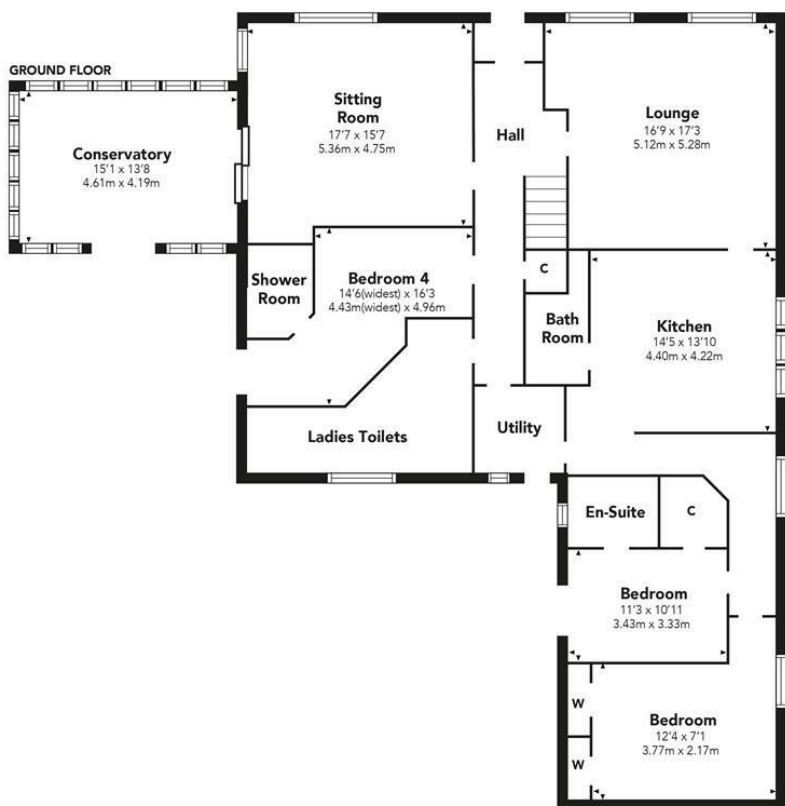




Pizzeria RESTAURANT

Loudoun Hill

## Loudoun Hill



RESIDENCE

Floor Plan measurements are approximate and are for illustrative purposes only. While we do not doubt the floor plans accuracy, we make no guarantee, warranty or representation as to the accuracy and completeness of the floor plan. You or your advisors should conduct a careful, independent investigation of the property to determine to your satisfaction as to the suitability of the property for your space requirements.

Produced by Plush Plans Ltd

We believe these details to be accurate; however, they do not form any part of a contract. Fixtures and fittings are not included unless specified in the enclosed. Photographs are for general information and it must not be inferred that any item is included for sale with the property. All distances and measurements are approximate. Floorplans may not be to scale and are for illustration purposes only.