



RESIDENCE

52 Townhead Street, Strathaven, ML10 6DH

[www.residencestateagents.co.uk](http://www.residencestateagents.co.uk)



Viewing by appointment with Residence Strathaven

T: 01357 572222 | E: [strathaven@residenceestateagents.co.uk](mailto:strathaven@residenceestateagents.co.uk) | A: 3 Bridge Street, Strathaven, ML10 6AN





## 4 Bedrooms | 2 Public Rooms | 3 Bathrooms

**\*\*CLOSING DATE WEDNESDAY 15TH MAY 24 @ 12PM\*\***

This impressive 4 bedroomed, stone-built, family detached villa occupies an excellent position within the heart of the town. The property is set within large, established gardens which are beautifully maintained and particularly private to the rear.

This is a stunning family home that offers an array of spacious, bright, airy and versatile apartments whilst retaining many of its period features, as well as having modern upgrades. The accommodation comprises, entrance vestibule, entered via attractive outer storm doors, a welcoming and inviting reception hallway with staircase to the upper floor level, generous bay windowed formal lounge, separate family or dining room with aspects to front, downstairs family bathroom with feature sauna, central hallway with access to a downstairs bedroom with en-suite shower room, stylish designed and fitted open plan dining size integrated kitchen and large double glazed laundry room/garden room with aspects and access to the rear. An attractive period staircase with feature half landing window leads to the upper floor landing where there are 3 further bedrooms and fitted shower room.

Features of the property include gas fired central heating, double glazing, established and sizable garden grounds. There is plenty of off-street parking on the driveway as well as detached garage.

Strathaven is a market Town located south of East Kilbride and Hamilton. The area offers excellent shopping facilities and sports facilities including swimming baths, bowling clubs, golf courses, public parks and country walks. Strathaven has a typical village community, a wide variety of shops within the town centre including restaurants, pubs, cafes and a large Sainsbury's. The area is highly regarded for its school catchment. For those commuting, there are excellent road links to the surrounding towns.



2185.00 sq ft | EER = D

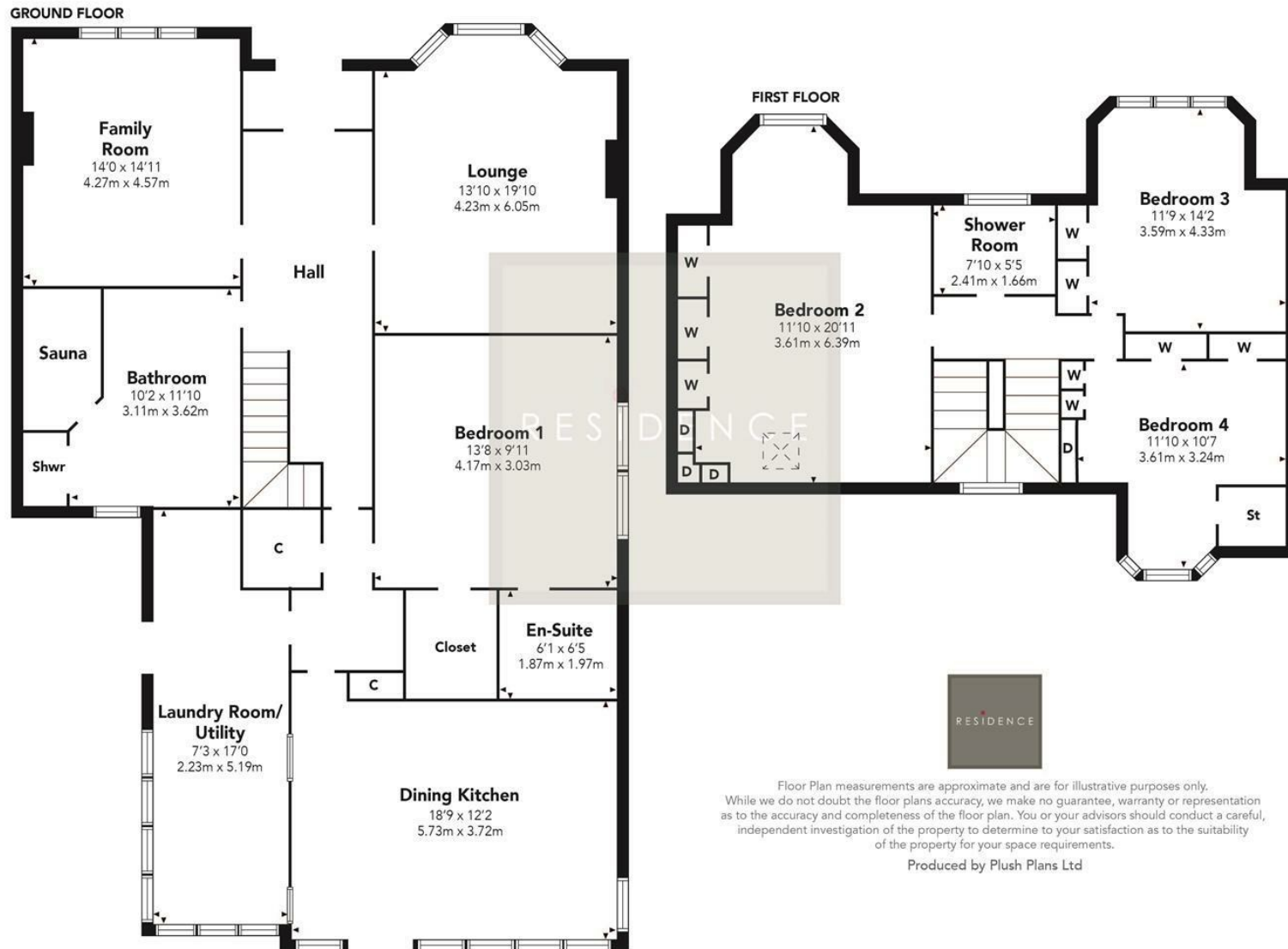


RESIDENCE





**Townhead Street**



We believe these details to be accurate; however, they do not form any part of a contract. Fixtures and fittings are not included unless specified in the enclosed. Photographs are for general information and it must not be inferred that any item is included for sale with the property. All distances and measurements are approximate. Floorplans may not be to scale and are for illustration purposes only.