



RESIDENCE

24 Southend Drive, Strathaven, ML10 6QT

www.residenceestateagents.co.uk



Viewing by appointment with Residence Strathaven

T: 01357 572222 | E: strathaven@residencestateagents.co.uk | A: 3 Bridge Street, Strathaven, ML10 6AN

3 Bedrooms | 1 Public Rooms | 1 Bathrooms

****CLOSING DATE WEDNESDAY 15TH MAY @ 1PM****

This sure to be popular, three bedroomed semi-detached villa is located within a quiet, sought after locale and will appeal to both the first-time buyer and family market.

The accommodation comprises; reception hallway, lounge with aspects to front and access to the modern fitted dining size kitchen with aspects and access to the rear gardens. On the upper floor there are the three bedrooms and a modern fitted family bathroom. Features of the property include gas central heating, double glazing, maintained gardens and driveway. Further features include a timber built summer house in the rear garden.

The floor plan will provide you with a detailed layout of this comfortable and well laid out home.

Southend Drive is a popular residential location, only a short drive away from the centre of town.

Strathaven is a market Town located south of East Kilbride and Hamilton. The area offers excellent shopping facilities and sports facilities including swimming baths, bowling clubs, golf courses, public parks and country walks. Strathaven has a typical village community, a wide variety of shops within the town centre including restaurants, pubs, cafes and a large Sainsbury's. The area is highly regarded for its school catchment. For those commuting, there are excellent road links to the surrounding towns which include East Kilbride, Hamilton and also links to the M74 motorway which connects the M8 motorway to Glasgow.



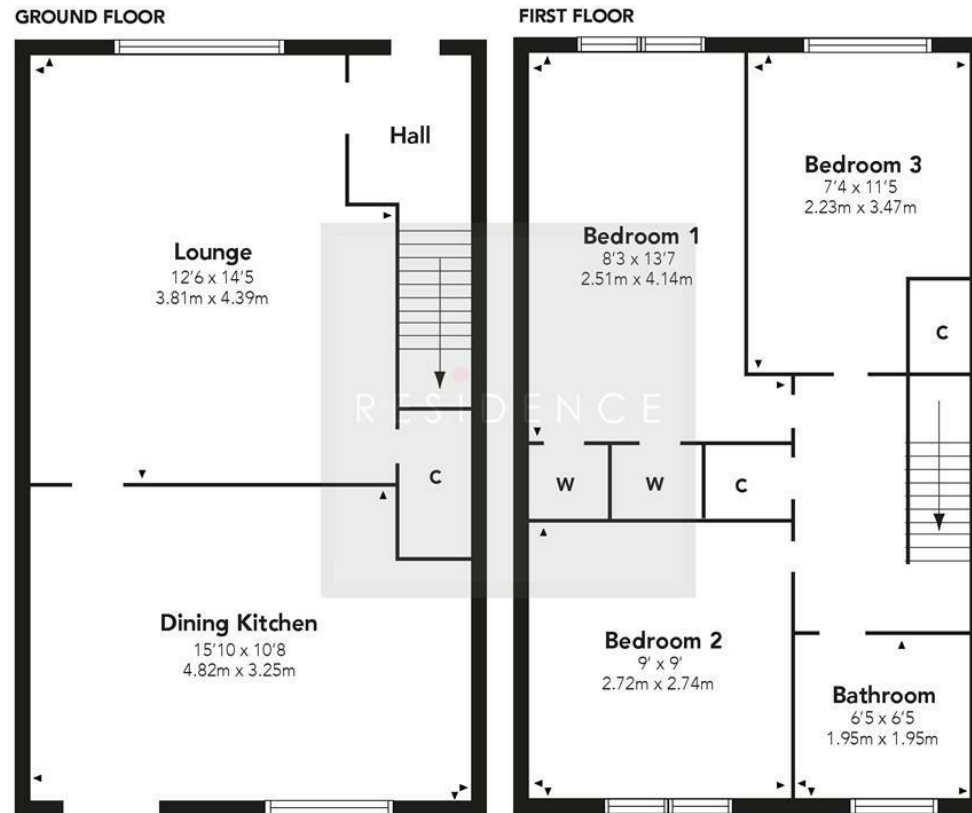
861.00 sq ft | EER = C



RESIDENCE



Southend Drive



Floor Plan measurements are approximate and are for illustrative purposes only. While we do not doubt the floor plans accuracy, we make no guarantee, warranty or representation as to the accuracy and completeness of the floor plan. You or your advisors should conduct a careful, independent investigation of the property to determine to your satisfaction as to the suitability of the property for your space requirements.

Produced by Plush Plans Ltd

We believe these details to be accurate; however, they do not form any part of a contract. Fixtures and fittings are not included unless specified in the enclosed. Photographs are for general information and it must not be inferred that any item is included for sale with the property. All distances and measurements are approximate. Floorplans may not be to scale and are for illustration purposes only.