

For Sale / To Let

Unit 10, North Tyne Industrial Estate,
Benton, Newcastle upon Tyne, NE12 9SZ



Industrial / Logistics Unit 4,197 m² (45,178 sq ft)

- Currently fitted out for frozen / chilled food distribution
- Main warehouse – Gross Internal Area: 2,739 m² (29,482 sq ft)
- Modern high bay extension – GIA: 1,458 m² (15,696 sq ft)
- Office accommodation & staff amenities
- Good access to the A19, A1058 Coast Road and Tyne Tunnel
- For Sale: £1,985,000 or To Let: £185,000 per annum

SITUATION

North Tyne Industrial Estate is situated on the A191 Whitley Road immediately opposite Asda Benton, approximately 4 miles to the East of Newcastle city centre and within 1 mile of the A19 Tyne Tunnel approach road.

The estate boasts a wide range of occupiers including Screwfix, Travis Perkins, BLP and Round the Twist across industrial, trade, distribution and leisure sectors.

Please refer to the attached map and plan for further information.

DESCRIPTION

The premises comprise the original warehouse (built 1979) and used primarily as a cash & carry, with more recent modern high bay extension incorporating a cold store facility, as summarised below:

High Bay Extension

- Modern high bay steel portal frame extension incorporating cold store
- Insulated steel sheet elevations and roof
- New energy efficient high bay LED lighting
- Fully serviced under maintenance contract
- 4 no dock level loading doors / service apron
- Two-storey office / amenity block
- Cold store operates at -20c delivering 120 kW of cooling capacity
- Storage capacity for 2,150 pallets (width 28.1 m x depth 33.4 m x height 10.35 m)
- Mixture of PUR and PIR insulated panelling
- Link 51 racking, 90% of which is motorised and fully movable

Cash & Carry Warehouse

- Steel portal frame warehouse (built 1979)
- Fitted with chilled zones and Cash & Carry
- Brick/blockwork to dado level with insulated steel cladding to eaves
- Built up mineral felt roof
- Clear internal height of 4.5 m
- Additional stores & loading areas
- 2 no ground level loading doors
- First floor office accommodation
- Secure service yard
- Staff / Customer car park

UTILITIES

The property benefits from supplies of gas, water and electricity. The available electrical capacity is 250 kVA.

The M&E currently in operation draws circa 140kVA.

ACCOMMODATION

The property has been measured on a Gross Internal Area (GIA) basis in accordance with the RICS Code of Measuring Practice (6th Edition) and the floor areas are presented as follows:

| | M ² | Sq ft |
|---------------------------|----------------|---------------|
| High Bay Warehouse | | |
| Freezer | 1,118.4 | 12,038 |
| Loading | 150.4 | 1,619 |
| Offices (GF & FF) | 189.4 | 2,039 |
| Sub-total | 1,458.2 | 15,696 |
| Main Warehouse | | |
| Link section | 275.1 | 2,961 |
| Warehouse / Cash & Carry | 1,494.2 | 16,083 |
| Stores / extensions | 823.6 | 8,865 |
| FF office | 146.2 | 1,573 |
| Sub-total | 2,739.0 | 29,482 |
| Total | 4,197.1 | 45,178 |

For further details please contact:



MARK PROUDLOCK
0191 594 5019 or 07766 968891
Mark.proudlock@knightfrank.com

SIMON HAGGIE
0191 594 5009 or 07798 570603
Simon.haggie@knightfrank.com

Subject to Contract

Particulars: January 2023
Aerial Image: 2013

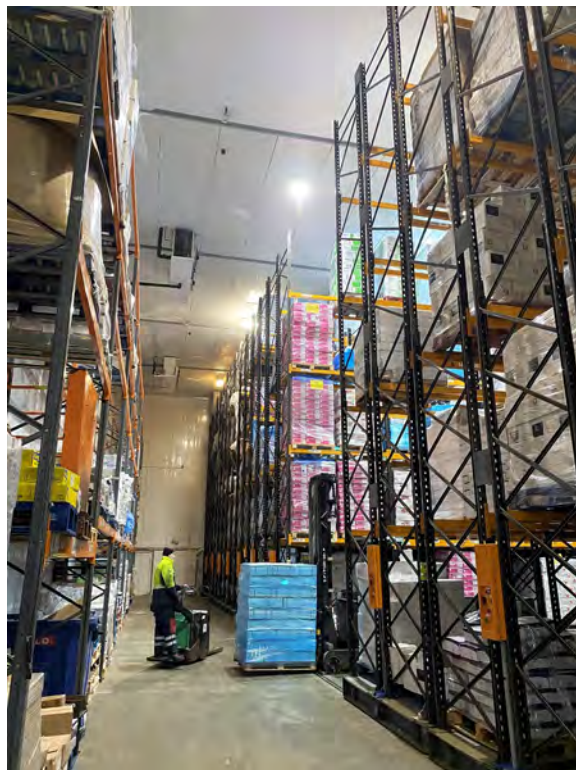
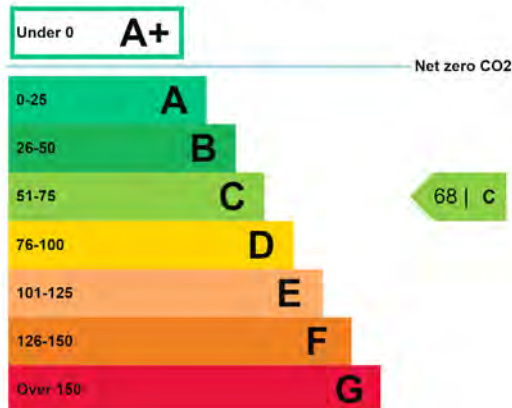
RATEABLE VALUE

According to the Valuation Office Agency website the property has Rateable Value effective 1st April 2023 of £166,000. Estimated rates payable (2023/24) are £84,992.

ENERGY PERFORMANCE

The property has the following Energy Performance Asset Rating:

This property's current energy rating is C.



TENURE

The property is held by way of 125 year long leasehold interest commencing 9 August 1982.

TERMS

Our client is seeking to dispose of their long leasehold interest for offers in the region of £1,985,000.

Alternatively the property is available to let for a term of years to be agreed for £185,000 per annum.

IMPORTANT NOTICE

- (1) Particulars: These particulars are not an offer or contract, nor part of one. Any information about price or value contained in the particulars is provided purely as guidance, it does not constitute a formal valuation and should not be relied upon for any purpose. You should not rely on statements by Knight Frank in the particulars or by word of mouth or in writing ("information") as being factually accurate about the property, its condition or its value. Neither Knight Frank LLP nor any joint agent has any authority to make any representations about the property. No responsibility or liability is or will be accepted by Knight Frank LLP, seller(s) or lessor(s) in relation to the adequacy, accuracy, completeness or reasonableness of the information, notice or documents made available to any interested party or its advisers in connection with the proposed transaction. All and any such responsibility and liability is expressly disclaimed.
- (2) Photos, Videos etc: The photographs, images, property videos and virtual viewings etc. show only certain parts of the property as they appeared at the time they were taken. Areas, measurements and distances given are approximate only.
- (3) Regulations: Any reference to alterations to, or use of, any part of the property does not mean that any necessary planning, building regulations or other consent has been obtained. A buyer or lessee must find out by inspection or in other ways that these matters have been properly dealt with and that all information is correct.
- (4) VAT: The VAT position relating to the property may change without notice.
- (5) Financial Crime: In accordance with the Money Laundering, Terrorist Financing and Transfer of Funds (Information on the Payer) Regulations 2017 and Proceeds of Crime Act 2002 Knight Frank LLP may be required to establish the identity and source of funds of all parties to property transactions.
- (6) To find out how we process Personal Data, please refer to our Group Privacy Statement and other notices at <https://www.knightfrank.com/legals/privacy-statement>.

Particulars dated January 2023. Aerial Image 2013. External images January 2023.

Knight Frank is the trading name of Knight Frank LLP. Knight Frank LLP is a limited liability partnership registered in England and Wales with registered number OC305934. Our registered office is at 55 Baker Street, London W1U 8AN where you may look at a list of members' names. If we use the term 'partner' when referring to one of our representatives, that person will either be a member, employee, worker or consultant of Knight Frank LLP and not a partner in a partnership.

VAT

All rents and prices are quoted exclusive of Value Added Tax (VAT) which will be charged at the prevailing rate. Intending purchasers or lessees must satisfy themselves independently as to the incidence of VAT in respect of any transaction.

VIEWING

Please contact the agents for a convenient appointment to view or for further information regarding the property.

