



ANCHORAGE

SALFORD QUAYS

ANCHORAGE, SALFORD QUAYS M50 3XE

ANCHORAGE SALFORD QUAYS

WELCOME TO ANCHORAGE, A LANDMARK BUILDING SITUATED AT THE HEART OF SALFORD'S THRIVING INTERNATIONAL BUSINESS QUARTER.

THIS RECENTLY RENOVATED, GRADE A OFFICE SPACE PROVIDES TENANTS WITH FLEXIBILITY. WITH INDIVIDUAL FITTED SUITES FROM C1,000 SQ FT UP TO FULL FLOORS OF 12,418 SQ FT, ANCHORAGE CAN CURRENTLY ACCOMMODATE A REQUIREMENT OF UP TO C30,000 SQ FT OR ANYWHERE IN BETWEEN.



FLEXIBLE
FLOOR
PLATES



EXTENSIVE SECURE
MULTI STORY CAR
PARKING



DEDICATED
METROLINK
STOP



EXCEPTIONAL
ON SITE
AMENITIES



CYCLING SCORE
GOLD ACCREDITED
BUILDING



FRESH & CONTEMPORARY

EXTENSIVELY REFURBISHED TO GRADE A STANDARD, ANCHORAGE OFFERS A PRIME WATERSIDE LOCATION WITH STUNNING VIEWS OF MANCHESTER, SALFORD AND BEYOND. TENANTS CAN ENJOY A RANGE OF STATE-OF-THE-ART AMENITIES THAT INCLUDE:



FEATURE ENTRANCE AND RECEPTION



OPEN PLAN OFFICES



FLEXIBLE FLOOR PLACES



SUPER BROADBAND



SECURE ON SITE CAR PARKING



FLEXIBLE LEASING STRUCTURE



SHOWER FACILITIES



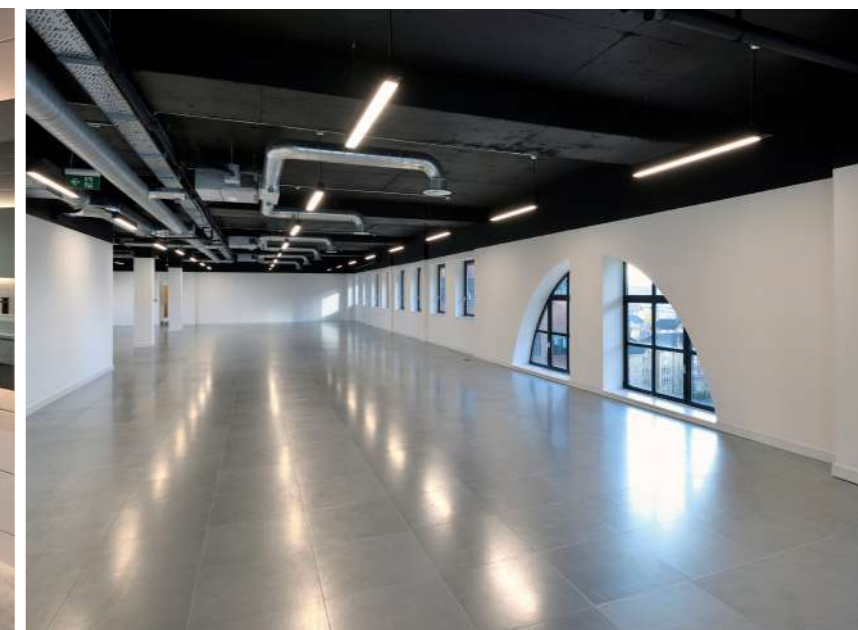
CYCLING SCORE GOLD ACCREDITED BUILDING

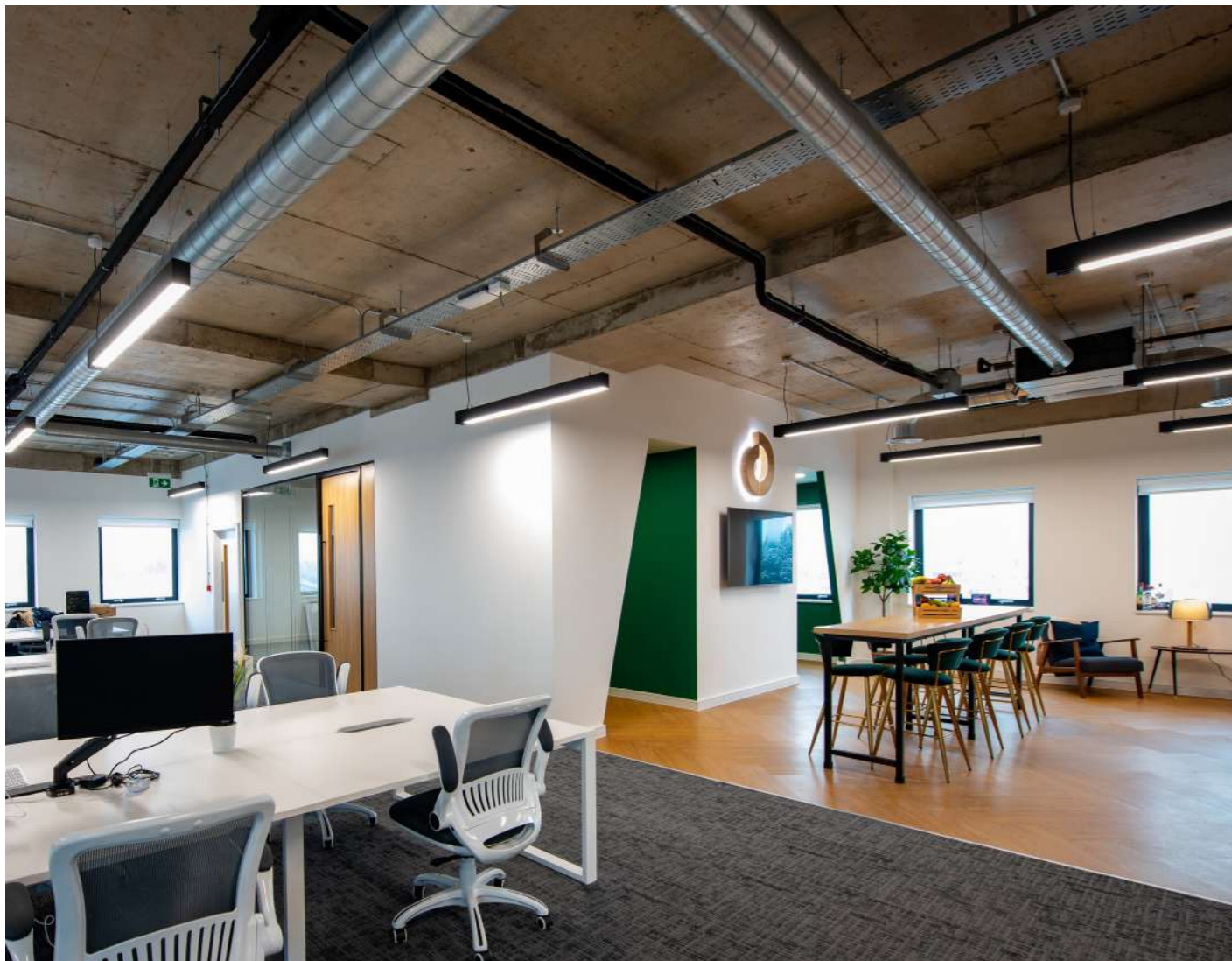


ON SITE CAFÉ

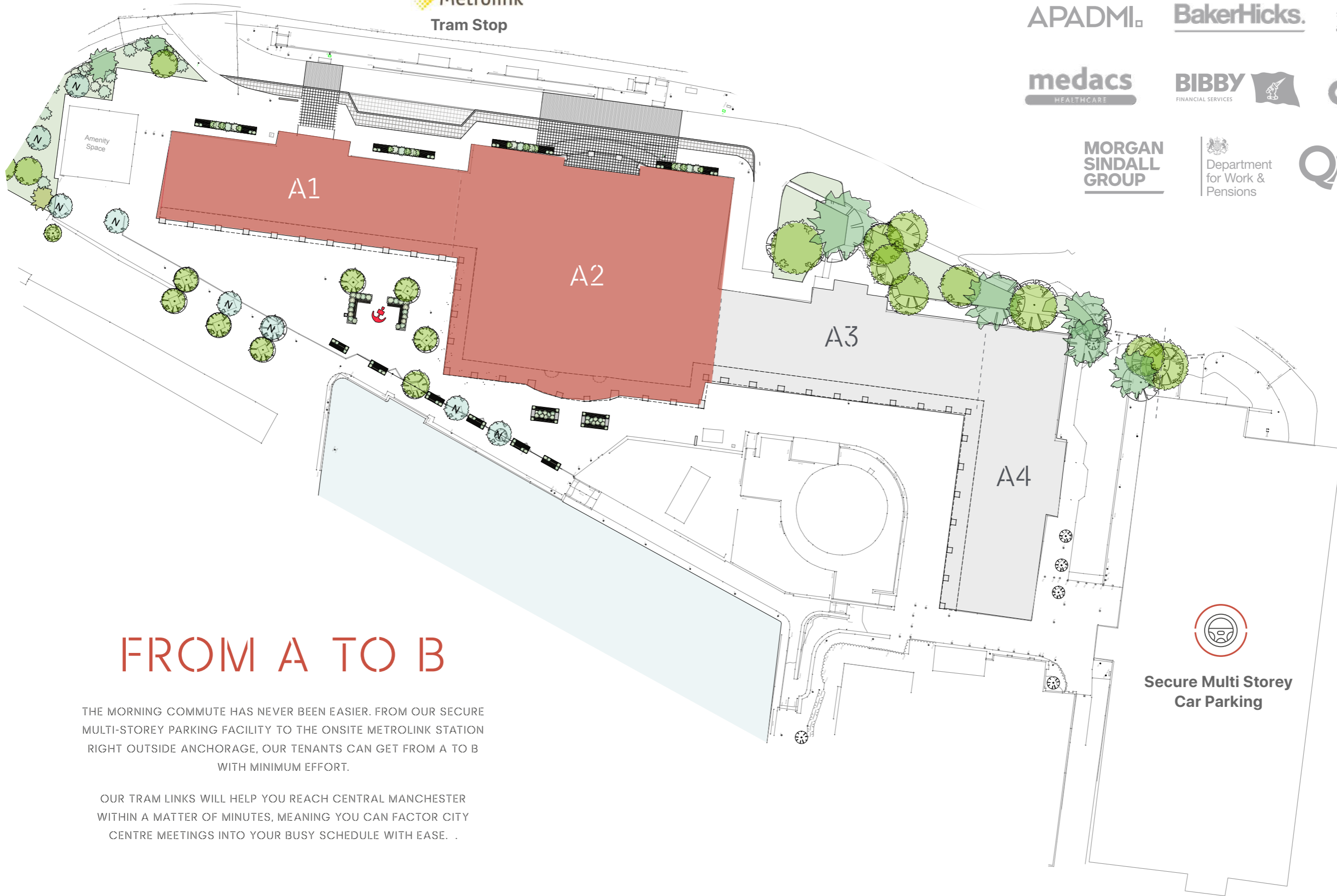
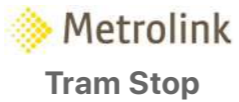


ON SITE CONVENIENCE STORE





NEIGHBOURS INCLUDE



FROM A TO B

THE MORNING COMMUTE HAS NEVER BEEN EASIER. FROM OUR SECURE MULTI-STOREY PARKING FACILITY TO THE ONSITE METROLINK STATION RIGHT OUTSIDE ANCHORAGE, OUR TENANTS CAN GET FROM A TO B WITH MINIMUM EFFORT.

OUR TRAM LINKS WILL HELP YOU REACH CENTRAL MANCHESTER WITHIN A MATTER OF MINUTES, MEANING YOU CAN FACTOR CITY CENTRE MEETINGS INTO YOUR BUSY SCHEDULE WITH EASE.



Secure Multi Storey Car Parking

AVAILABILITY

A1

GROUND FLOOR

SUITE 1 1,819 SQ FT

SUITE 2 2,131 SQ FT

DETAILS ON PAGE 7

SECOND FLOOR

SUITE 2 2,443 SQ FT

DETAILS ON PAGE 8

FIFTH FLOOR

5,597 SQ FT

DETAILS ON PAGE 9

SIXTH FLOOR

5,551 SQ FT

DETAILS ON PAGE 9

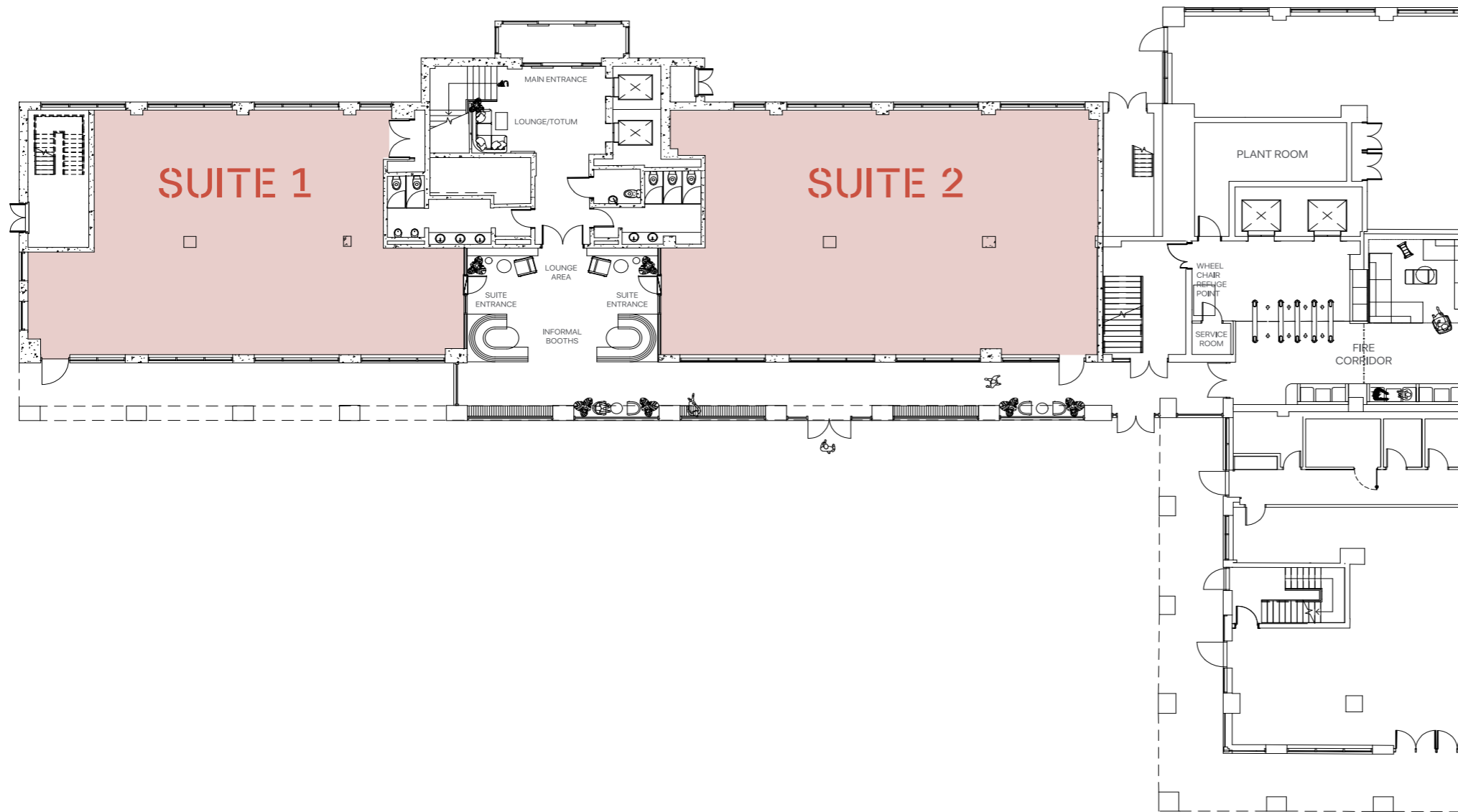
A2

SEVENTH FLOOR

12,418 SQ FT

DETAILS ON PAGE 10

GROUND FLOOR



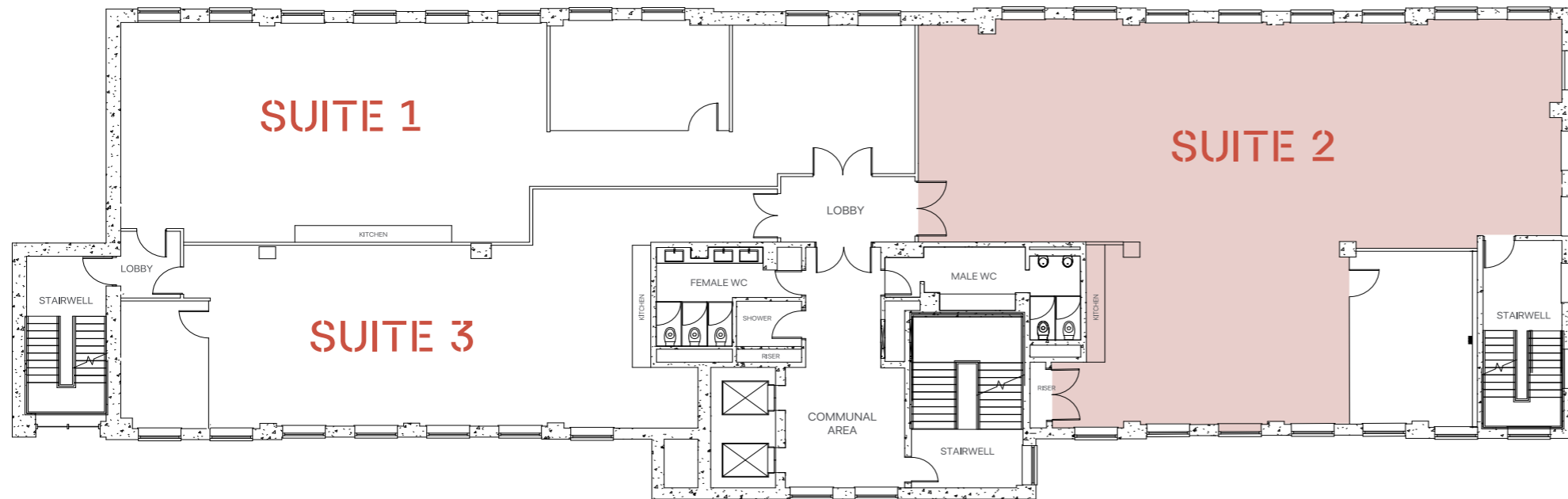
FEATURES

- FULL ACCESS RAISED FLOORS
- EXPOSED CONCRETE SOFFITS
- 24 HOUR SECURE ACCESS
- FULLY DDA COMPLIANT
- ONSITE BIKE AND SHOWER FACILITIES
- SUPERB BROADBAND CONNECTIVITY IMMEDIATELY AVAILABLE WITH M247 AND TELCOM ALREADY INSTALLED AND READY TO GO
- SHELL CONDITION - READY FOR YOUR FIT OUT

FLOOR AREA

SUITE 1	1,819 SQ FT
SUITE 2	2,131 SQ FT

FLOOR 2



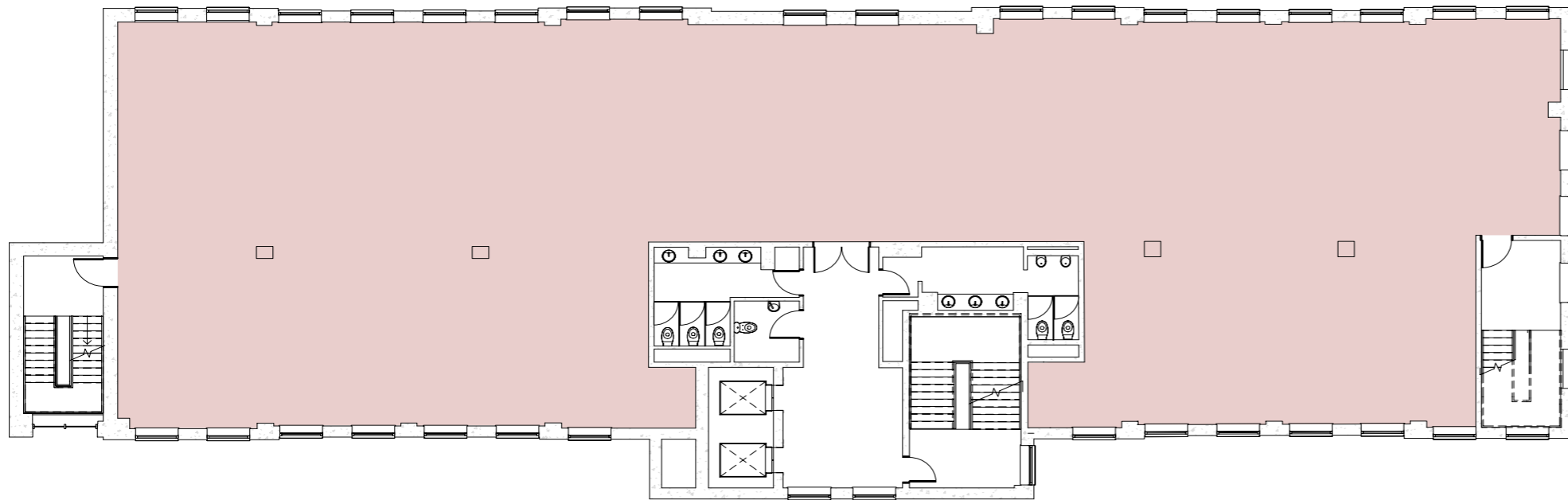
FEATURES

- FULL ACCESS RAISED FLOORS
- MODERN VRF SYSTEM PROVIDING HEATING AND COOLING
- EXPOSED CONCRETE SOFFITS
- SUSPENDED LED PENDANT LIGHTING
- HIGH GRADE CARPET FINISHES
- MEETING ROOMS INCORPORATING GLAZED PARTITION WALLS
- HIGH QUALITY KITCHEN WITH INTEGRATED ZIP TAP
- 24 HOUR SECURE ACCESS
- FULLY DDA COMPLIANT
- ONSITE BIKE AND SHOWER FACILITIES
- SUPERB BROADBAND CONNECTIVITY IMMEDIATELY AVAILABLE WITH M247 AND TELCOM ALREADY INSTALLED AND READY TO GO

FLOOR AREA

SUITE 1	1,709 SQ FT
SUITE 2	2,443 SQ FT
SUITE 3	1,242 SQ FT

FLOORS 5 & 6



FEATURES

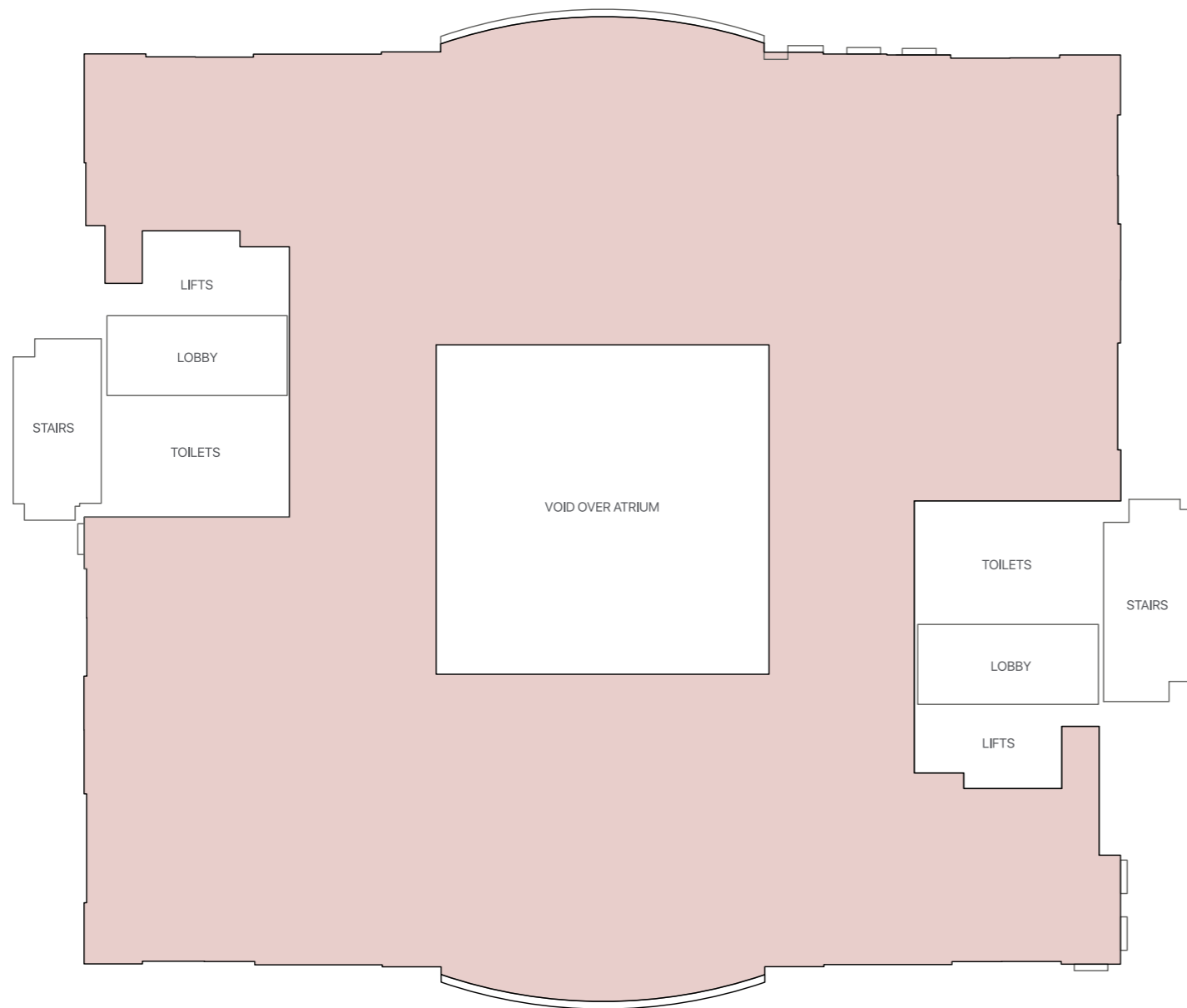
- FULL ACCESS RAISED FLOORS
- MODERN VRF SYSTEM PROVIDING HEATING AND COOLING
- EXPOSED CONCRETE SOFFITS
- SUSPENDED LED PENDANT LIGHTING
- 24 HOUR SECURE ACCESS
- FULLY DDA COMPLIANT
- ONSITE BIKE AND SHOWER FACILITIES
- SUPERB BROADBAND CONNECTIVITY IMMEDIATELY AVAILABLE WITH M247 AND TELCOM ALREADY INSTALLED AND READY TO GO

FLOOR AREA

FLOOR 5 5,597 SQ FT

FLOOR 6 5,551 SQ FT

FLOOR 7



FEATURES

- FULL ACCESS RAISED FLOORS
- MODERN VRF SYSTEM PROVIDING HEATING AND COOLING
- EXPOSED CONCRETE SOFFITS
- SUSPENDED LED PENDANT LIGHTING
- 24 HOUR SECURE ACCESS
- FULLY DDA COMPLIANT
- ONSITE BIKE AND SHOWER FACILITIES
- SUPERB BROADBAND CONNECTIVITY IMMEDIATELY AVAILABLE WITH M247 AND TELCOM ALREADY INSTALLED AND READY TO GO

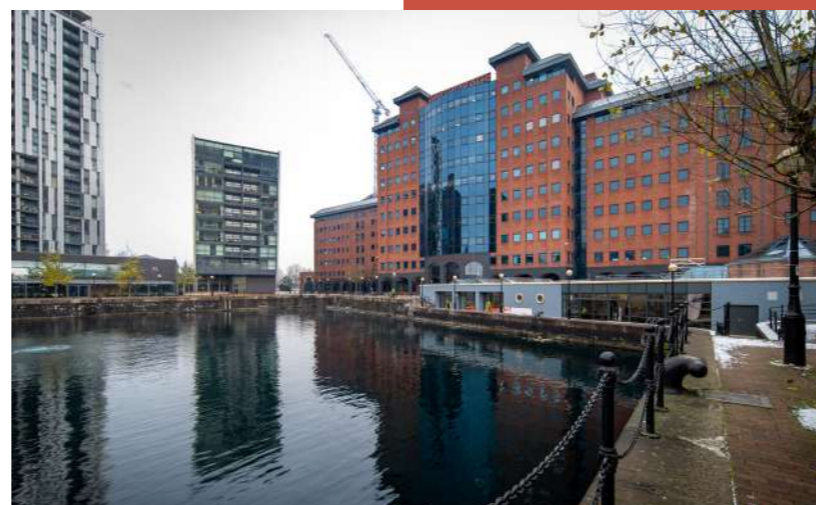
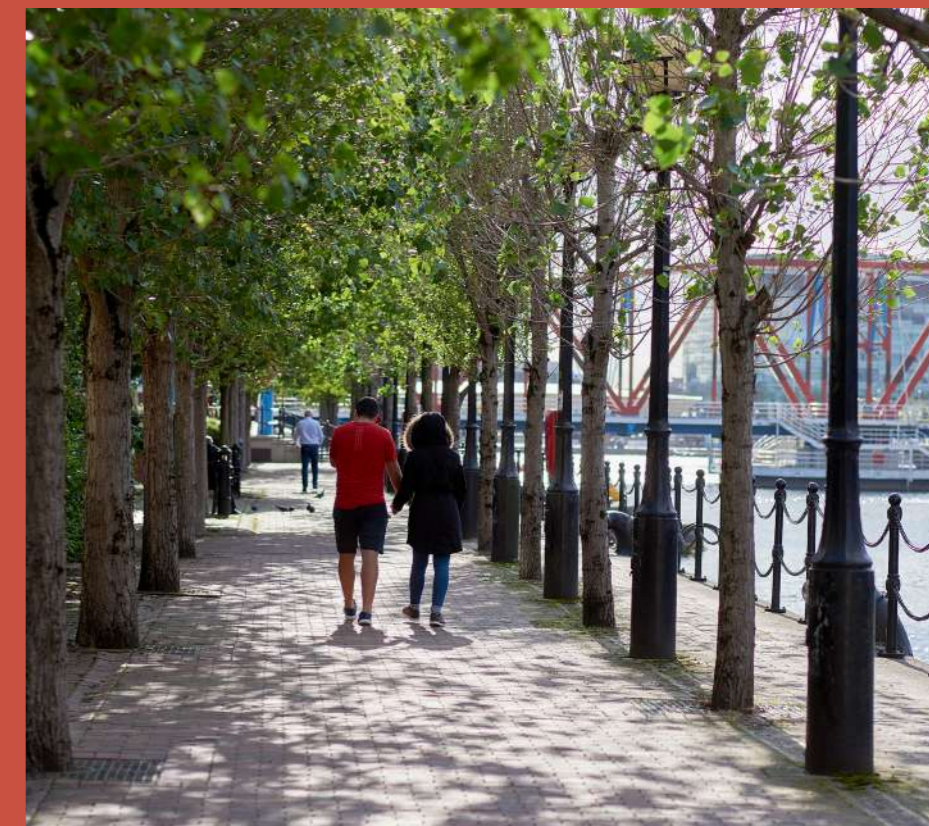
FLOOR AREA

12,418 SQ FT

ANCHORAGE ONE

UNIQUE LOCATION

ANCHORAGE'S SPECTACULAR WATERFRONT LOCATION OFFERS A HOST OF SPORTING AND CULTURAL ATTRACTIONS, CINEMAS, WORLD CLASS EVENTS, SHOPPING AND AN ABUNDANCE OF CONTEMPORARY RESTAURANTS AND BARS.





SALFORD

MANCHESTER CITY CENTRE

M602

REGENT ROAD A57

ANCHORAGE

IBIS BUDGET MANCHESTER SALFORD QUAYS

ANCHORAGE

TRAFFORD ROAD A5063

AC BY MARRIOTT SALFORD QUAYS

MILLENNIUM TOWER

SALFORD QUAYS

X1 MEDIA CITY

HARBOUR CITY

BUPA

PREMIER INN

HOLIDAY INN EXPRESS

BROADWAY

SAINSBURYS

QUAYSIDE OUTLET MALL

HELLY HANSEN WATERSPORTS CENTRE

UNIVERSITY OF SALFORD

VUE CINEMA

ITV

THE LOWRY

VIRGIN ACTIVE

THE ANCHORAGE IS WELL LOCATED IN A PEDESTRIAN FRIENDLY LOCATION ON THE FRINGE OF MANCHESTER. THE JOURNEY TIME TO THE CITY CENTRE IS JUST 9 MINUTES BY METROLINK AND 8 MINUTES BY CAR

HOLIDAY INN

BBC

MEDIACITYUK

THE ALCHEMIST

THE STUDIOS

MEDIACITYUK

ANCHORAGE

STAY CONNECTED

FROM ANCHORAGE, THE WORLD IS YOUR OYSTER. TRAVERSE THE ENTIRE CITY WITHIN UNDER AN HOUR WITH OUR EXCELLENT TRANSPORT LINKS, OR USE THE PRIME LOCATION, JUST A TWO-MINUTE DRIVE FROM THE M602, AS A BASE FOR TRAVELLING TO MAJOR UK CITIES.



TRAM STOP IMMEDIATELY
OUTSIDE ANCHORAGE



ANCHORAGE IS LOCATED WITHIN A 2
MINUTE DRIVE OF JUNCTION 3 OF THE
M602 MOTORWAY

MANCHESTER PICCADILLY	21 MINS
ECCLES	12 MINS
MEDIACITY UK	3 MINS
EAST DIDSBURY	34 MINS
ALTRINCHAM	38 MINS
BURY	50 MINS



THE PROPERTY IS ONLY A 20 MINUTE DRIVE
FROM MANCHESTER AIRPORT, WHICH SERVED
OVER 29 MILLION PASSENGERS IN 2019.

ANCHORAGE

ONE

ONE

HELPING YOU MEET YOUR ESG AMBITIONS



COCKTAIL MAKING EXPERIENCE FOR OUR TENANTS!



POP UP GIFT SHOP



BEE EXPERIENCE FOR THE TENANTS WITH OUR VERY OWN BEES!



SECURE LOCKERS AVAILABLE



POP UP CAKES, BROWNIES AND COOKIES!

AT ANCHORAGE WE WANT TO HELP YOU MEET YOUR ESG AMBITIONS AND TO HELP KEEP YOUR STAFF HAPPY, ENGAGED AND EXCITED TO COME TO WORK.



WITH OUR WATERFRONT LOCATION AND FANTASTIC VIEWS, OUR ONSITE FACILITIES AND THOSE NEARBY AT MEDIA CITY AND THE QUAYSIDE (FORMER LOWRY OUTLET), THE WELLBEING & HAPPINESS OF YOUR WORKFORCE WILL SKYROCKET!



WE HAVE REDUCED WATER USAGE BY 19,000 LITRES A DAY AS A RESULT OF WATER SAVING MEASURES, SAVING COST AS WELL AS CO2 EMISSIONS.



WITH THE ANCHORAGE TRAMSTOP RIGHT ON THE DOORSTEP AND AN ONSITE MULTISTOREY CAR PARK WE CAN KEEP YOUR STAFF MOVING! WHAT'S MORE, WE ARE INSTALLING EV CHARGERS – WATCH THIS SPACE!



OUR BUILDINGS ARE FITTED WITH SMART TECHNOLOGY THAT PROVIDES REAL-TIME ENERGY USAGE, HELPING US TO IDENTIFY ENERGY SAVING OPPORTUNITIES – SAVING MONEY AND THE PLANET! OUR ELECTRICITY IS SOURCED FROM A 100% RENEWABLE PROVIDER AND WE'RE ALSO CURRENTLY EXPLORING WAYS TO BRING SOLAR ELECTRICITY GENERATION TO THE SITE TO FURTHER REDUCE ENERGY COSTS.



FOR STAFF PREFERRING TO ARRIVE ON TWO WHEELS, ON FOOT OR THOSE THAT FANCY A LUNCH TIME RUN AROUND THE QUAYS OR EVEN A SWIM IN THE DOCK(!), WE HAVE A DEDICATED BIKE STORE, SHOWERS AND CHANGING FACILITIES, AND LOCKERS!



OUR NOD TO NATURE INCLUDES BUG HOTELS AND THE GREEN WALLS WE HAVE ON SITE, WITH MATURE PLANTS LOCATED THROUGHOUT THE ESTATE AND WITHIN OUR BUILDINGS. DID YOU KNOW WE ALSO HAVE OUR OWN ANCHORAGE BEES ON SITE PRODUCING DELICIOUS HONEY THAT YOU CAN BUY WITH ALL PROCEEDS GOING TOWARD OUR ANNUAL CHARITY?



AS WELL AS BEING A STONE'S THROW FROM THE VAST OPTIONS AT MEDIA CITY AND THE QUAYSIDE, WE HAVE A CHOICE OF FOOD OUTLETS ONSITE TO CATER FOR YOUR CORPORATE REQUIREMENTS AND TO KEEP YOUR STAFF FED AND WATERED!



WE LOVE TO ENGAGE WITH OUR TENANTS AND ALL THEIR STAFF – WE REGULARLY HOST TENANT MEETINGS AND FANTASTIC EVENTS AND POP-UP SHOPS!

LEASING AGENTS:

MATT SHUFFLEBOTTOM

+44 (0)7734 229202

0161 833 7705

matt.shufflebottom@knightfrank.com



MARK CANNING

+44 (0)7767 872 813

0161 244 5500

mark@canningoneill.com

CANNING O'NEILL

THE NORTH WEST'S SPECIALIST OFFICE AGENTS

ASSET MANAGER:

PAUL BRUSTAD

+44 7706 355 830

paul@citivale.com



ANCHORAGESALFORDQUAYS.COM