

LEEDS CREATIVE DISTRICT

LEEDS DOCK

**WORKSPACE:
TECHNICAL PACK**

LEEDS DOCK SITE PLAN



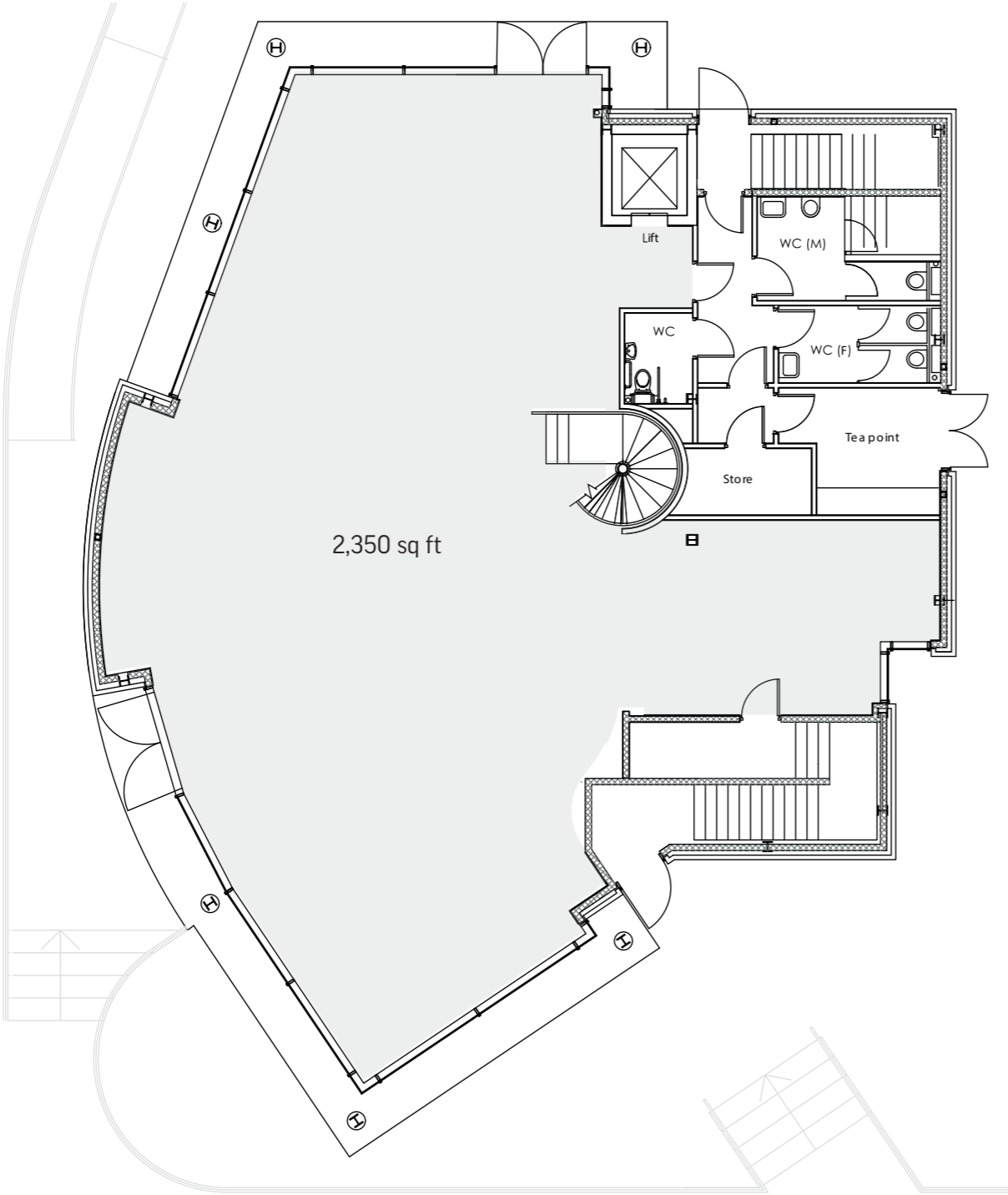
EAST DOCK

EAST DOCK BASE PLANS

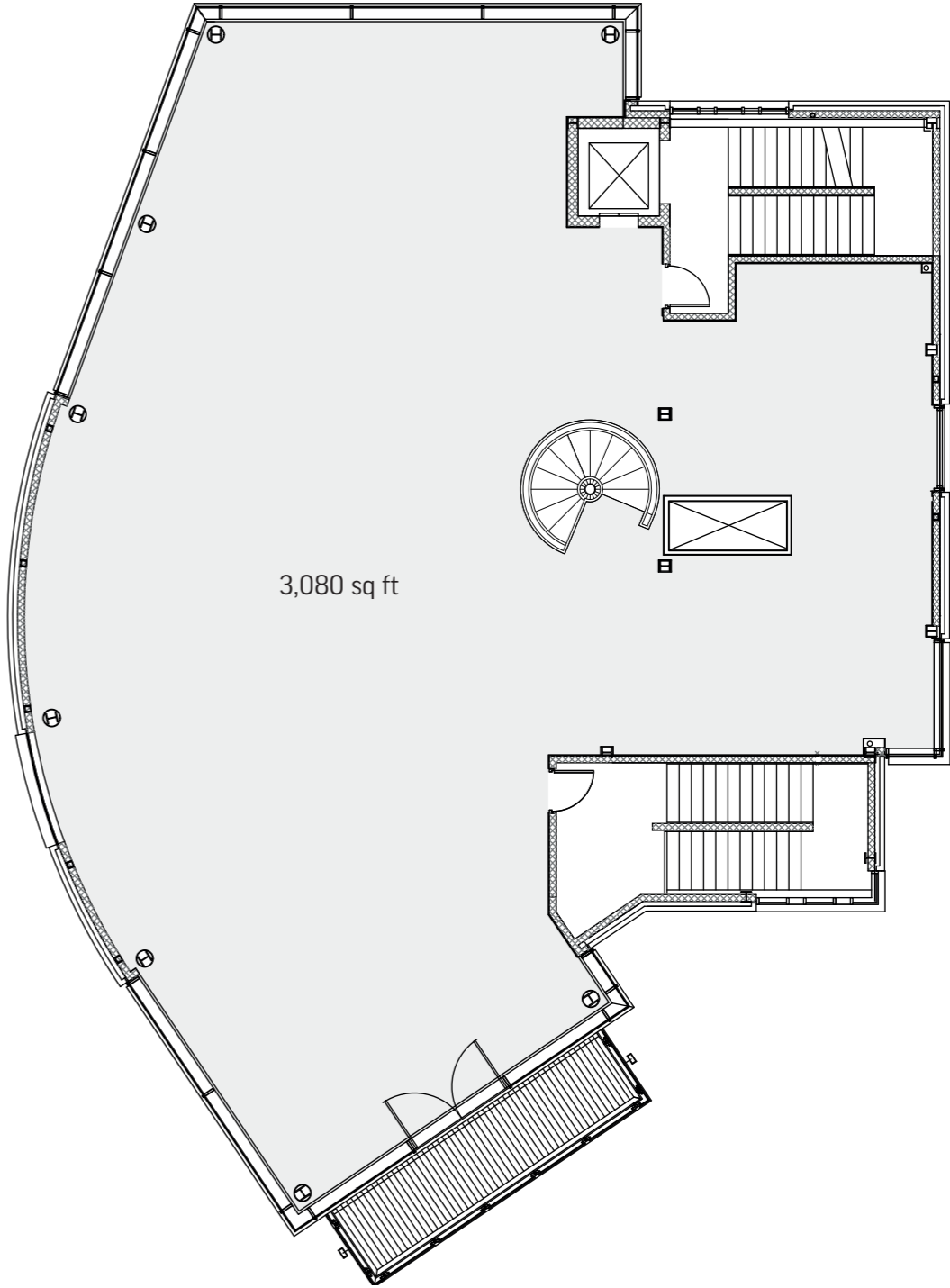
GROUND & MEZZANINE LEVEL

GROUND LEVEL:
2,350 sq ft

MEZZANINE LEVEL:
3,080 sq ft



GROUND LEVEL



MEZZANINE LEVEL

EAST DOCK SPACE PLANS

GROUND & MEZZANINE LEVEL

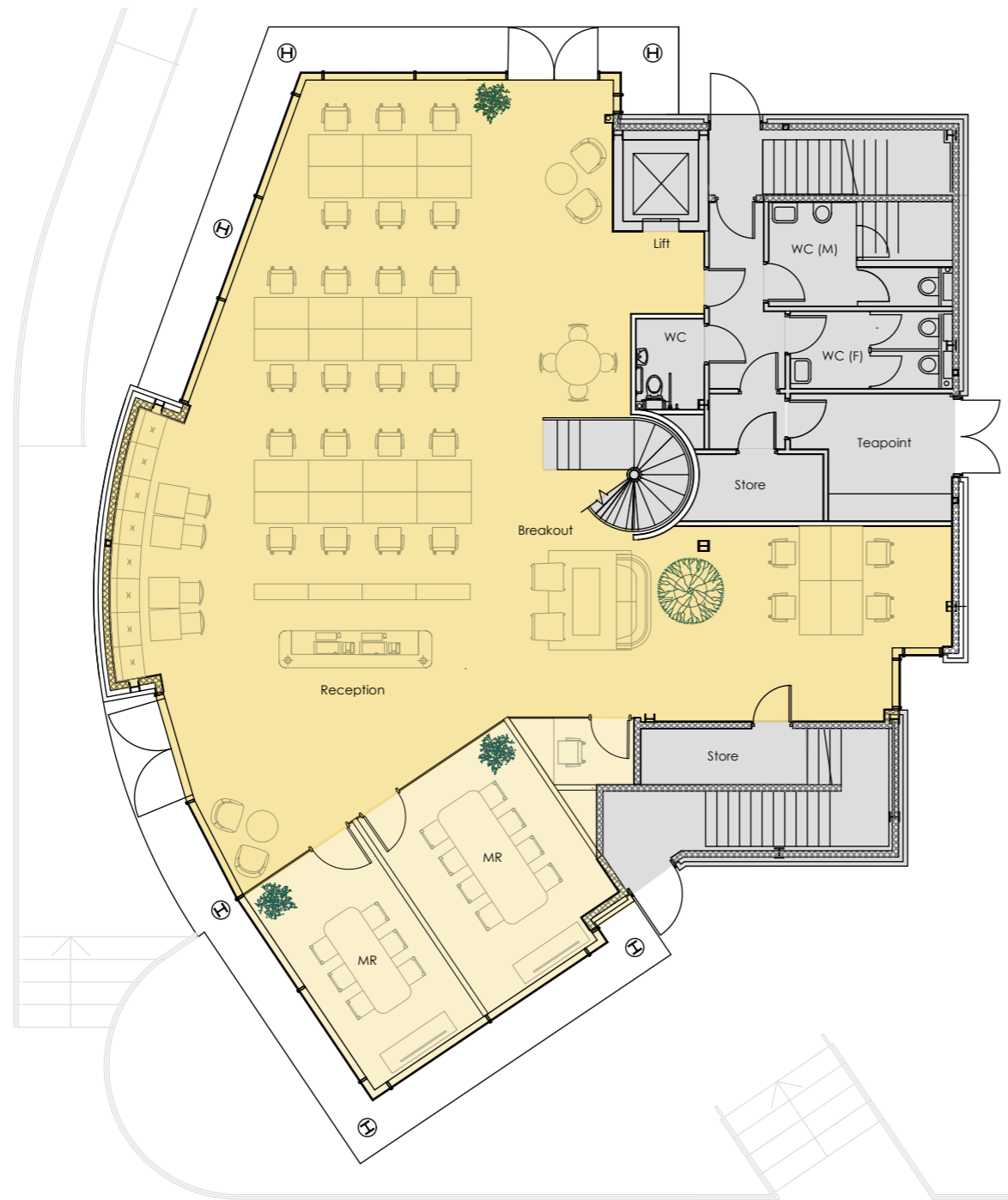
INVENTORY

GROUND:
2,350 sq ft
26 desks

Meeting rooms:
1 x 8-person
1 x 6-person

MEZZANINE:
3,080 sq ft
40 desks

Meeting rooms:
1 x 10-person
1 x 8-person



GROUND LEVEL



MEZZANINE LEVEL

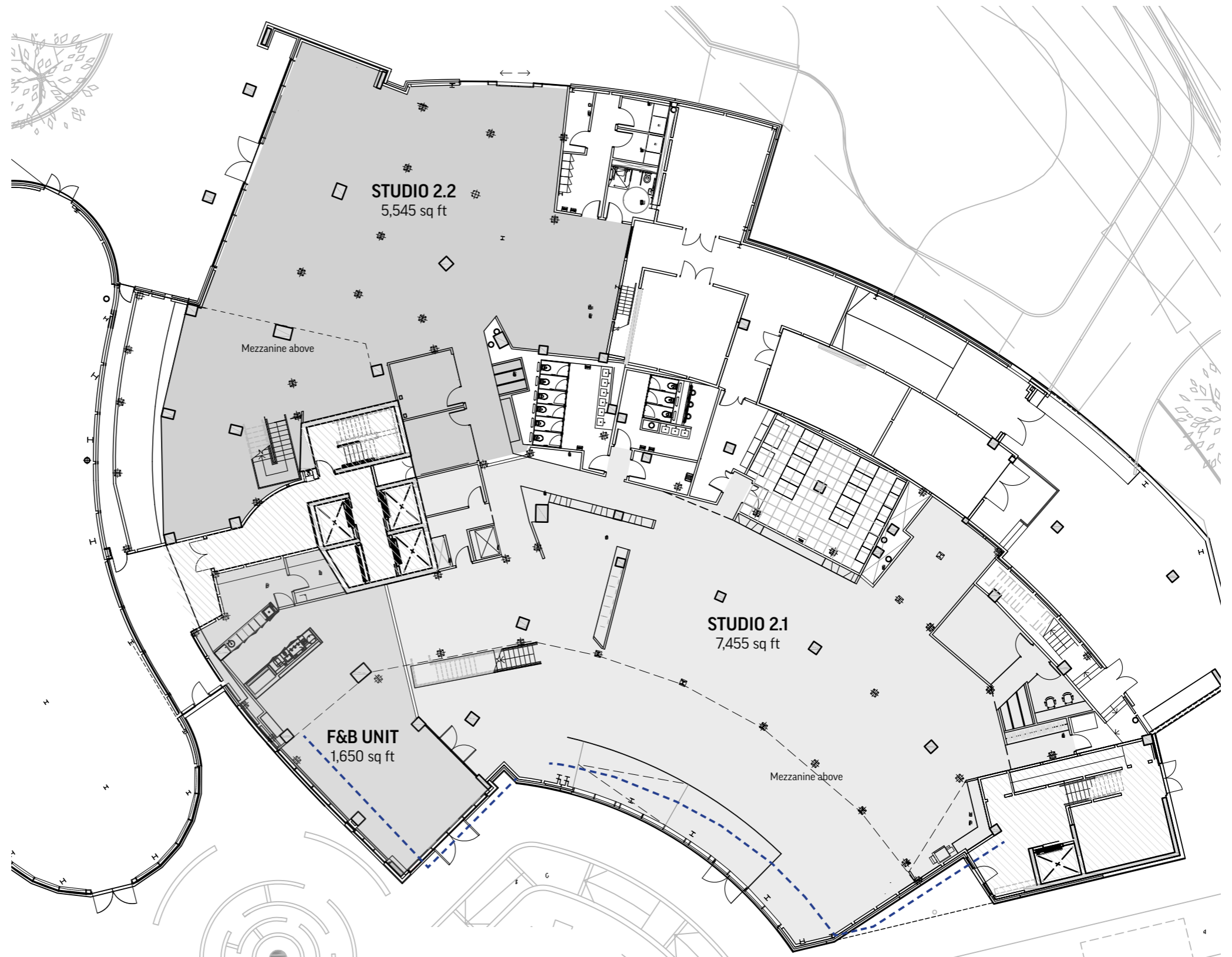
SOUTH DOCK

SOUTH DOCK BASE PLANS

2 UNIT OPTION

GROUND LEVEL:
14,650 sq ft

GROUND LEVEL

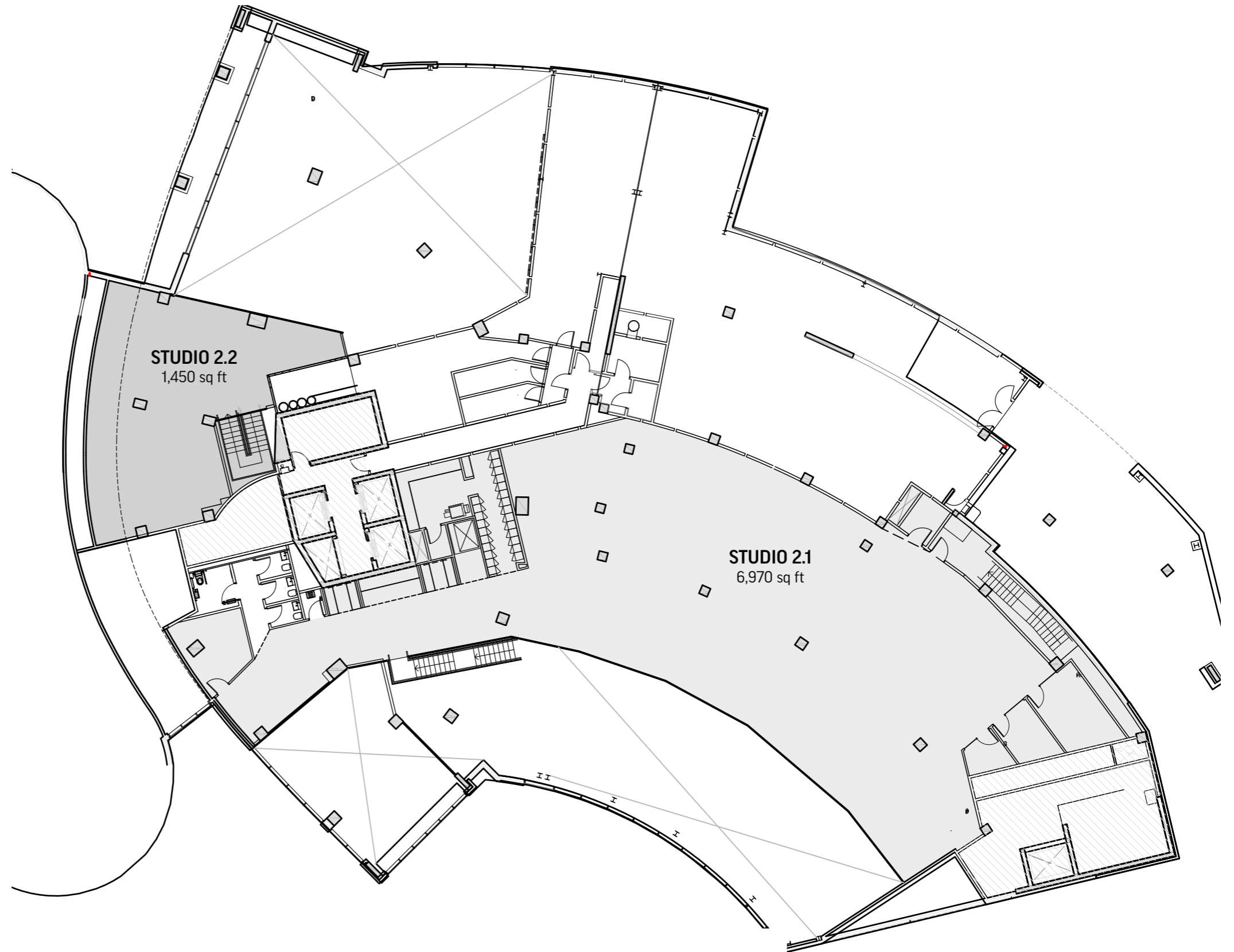


SOUTH DOCK BASE PLANS

2 UNIT OPTION

MEZZANINE LEVEL:
8,420 sq ft

MEZZANINE LEVEL



SOUTH DOCK SPACE PLAN

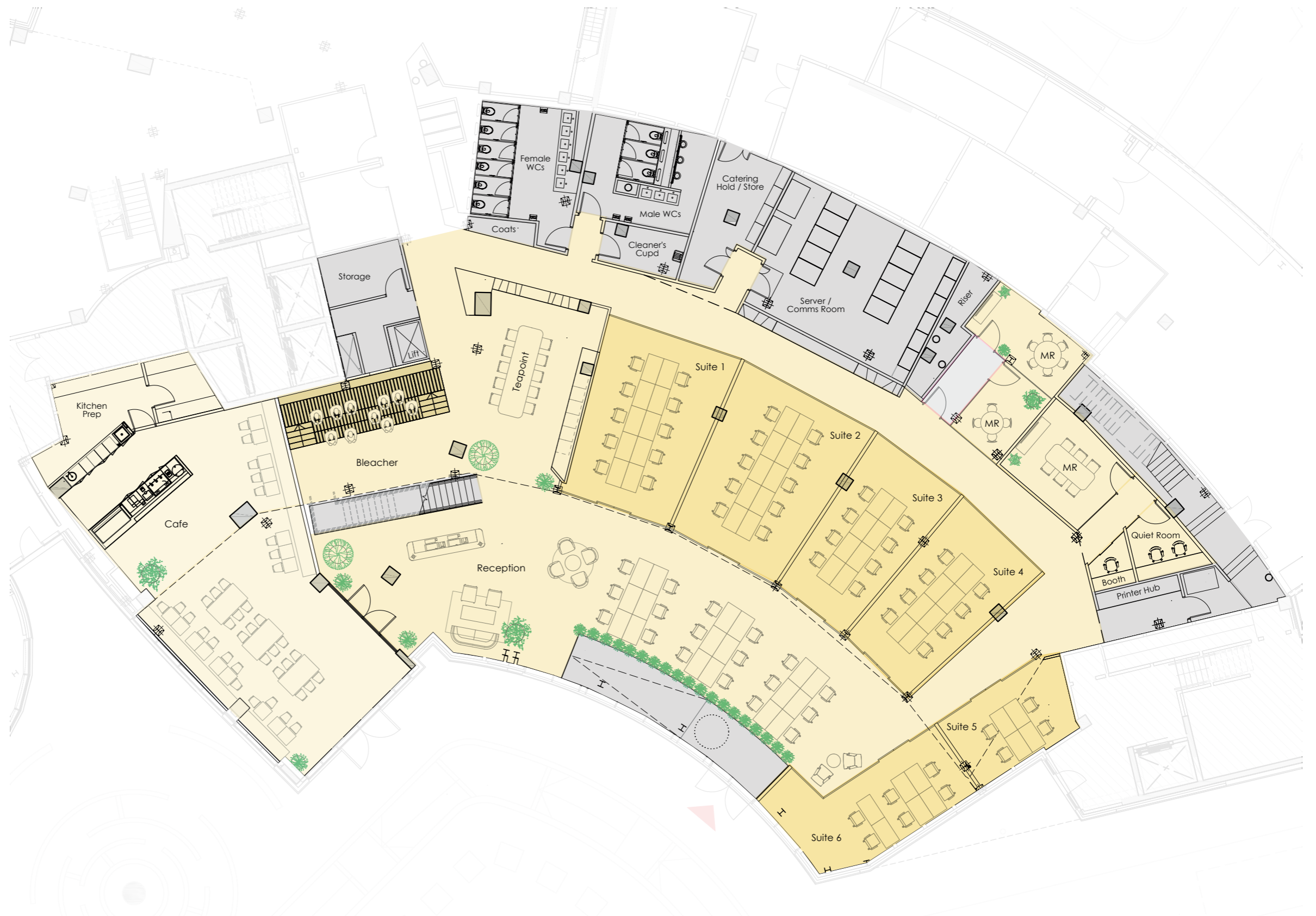
STUDIO 2.1

INVENTORY

GROUND LEVEL:
7,455 sq ft
46 desks in suites
18 resident desks
Cafe

Meeting rooms:
1 x 6-person
2 x 4-person
1 x quiet room
1 x phone booth

GROUND LEVEL



SOUTH DOCK SPACE PLAN

STUDIO 2.1

INVENTORY

MEZZANINE LEVEL:

6,970 sq ft

65 desks in suites

12 resident desks

Meeting rooms:

1 x 6-person

1 x 4-person

1 x phone booth

MEZZANINE LEVEL



SOUTH DOCK SPACE PLAN

STUDIO 2.2

INVENTORY

GROUND LEVEL:
5,545 sq ft
52 desks

Meeting rooms:
2 x 6-person

GROUND LEVEL



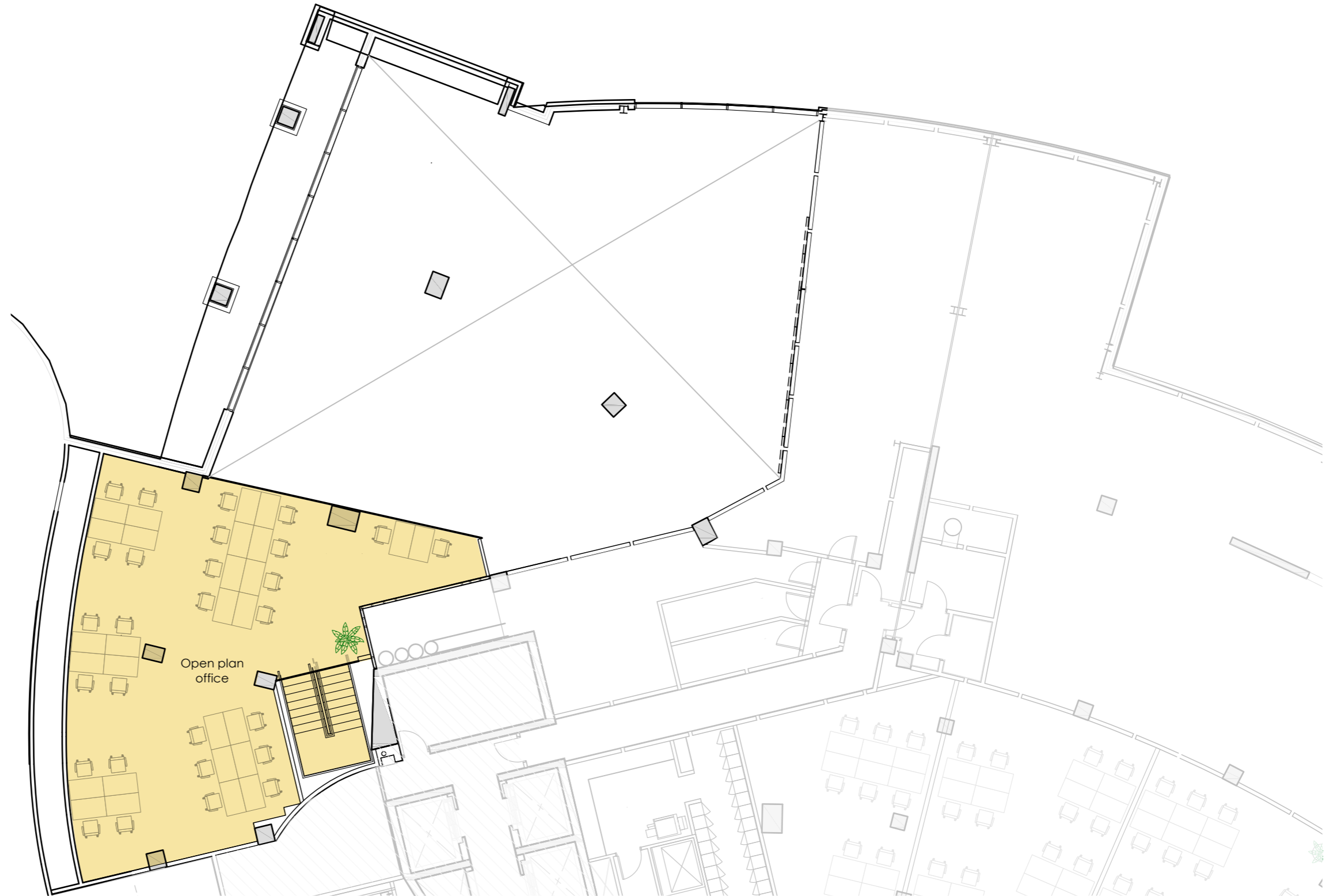
SOUTH DOCK SPACE PLAN

STUDIO 2.2

INVENTORY

MEZZANINE LEVEL:
1,450 sq ft
28 desks

MEZZANINE LEVEL



SOUTH QUAY

SOUTH QUAY BASE PLAN

SINGLE UNIT OPTION

GROUND LEVEL:
8,800 sq ft

GROUND LEVEL

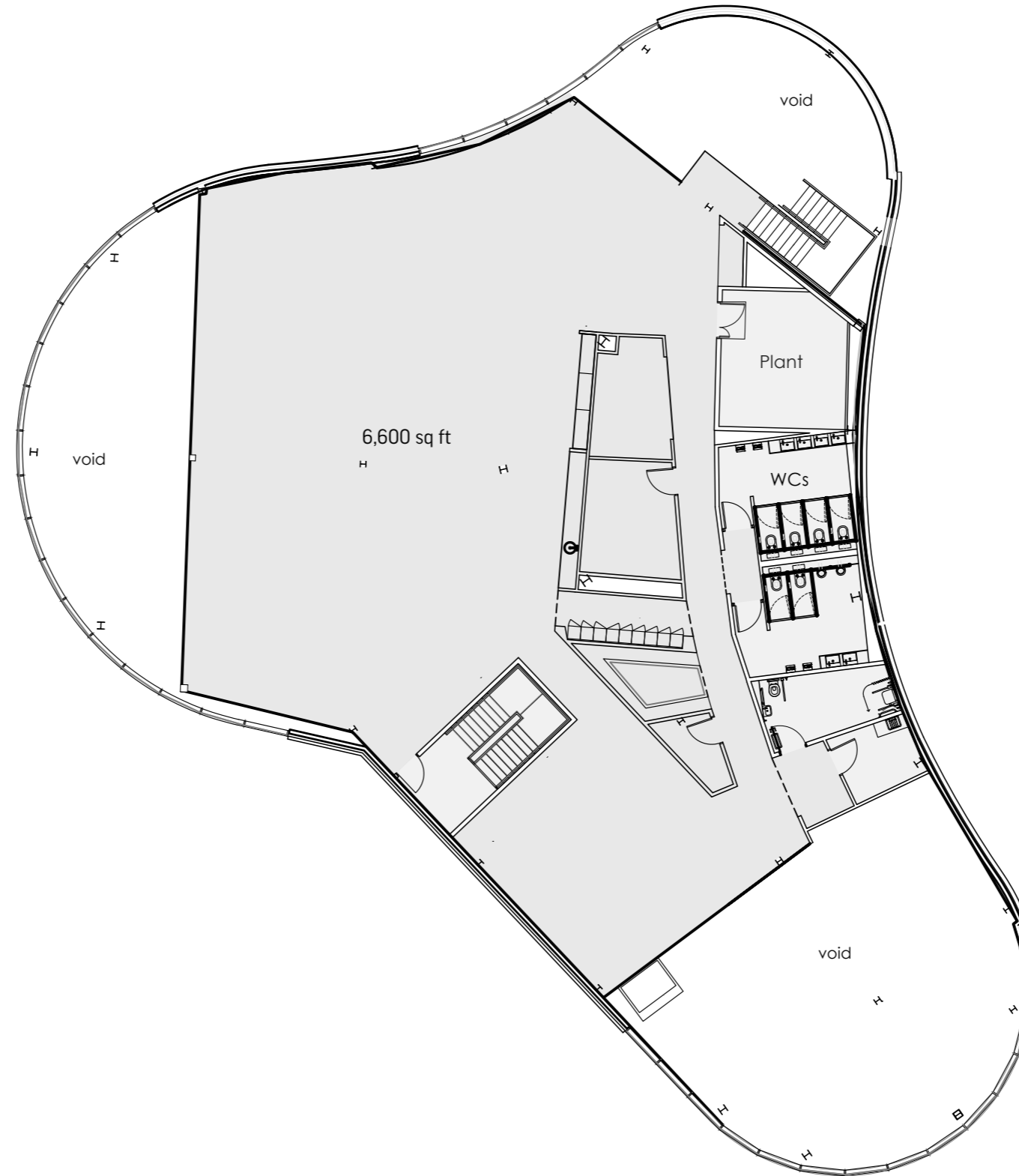


SOUTH QUAY BASE PLAN

SINGLE UNIT OPTION

MEZZANINE LEVEL:
6,600 sq ft

MEZZANINE LEVEL



SOUTH QUAY SPACE PLAN

GROUND LEVEL

INVENTORY

GROUND:
8,800 sq ft
50 desks

Meeting rooms:
Bleacher
1 x 8-person
1 x 6-person
2 x 4-person
1 x quiet room
1 x phone booth



SOUTH QUAY SPACE PLAN

MEZZANINE LEVEL

INVENTORY

MEZZANINE:
6,600 sq ft
72 desks

Meeting rooms:
1 x 8-person
2 x 6-person
2 x 4-person



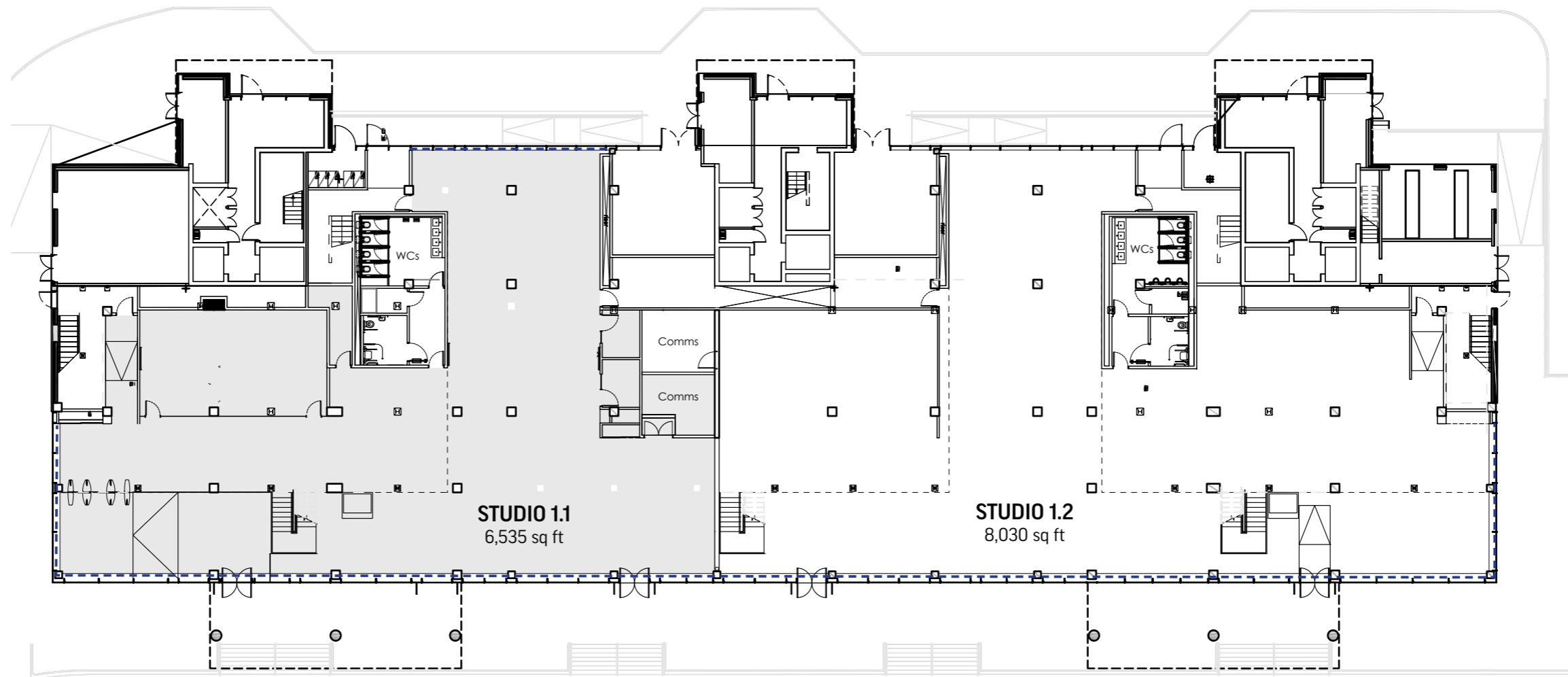
WEST DOCK

WEST DOCK BASE PLANS

2 UNIT OPTION

GROUND LEVEL

GROUND LEVEL:
14,565 sq ft

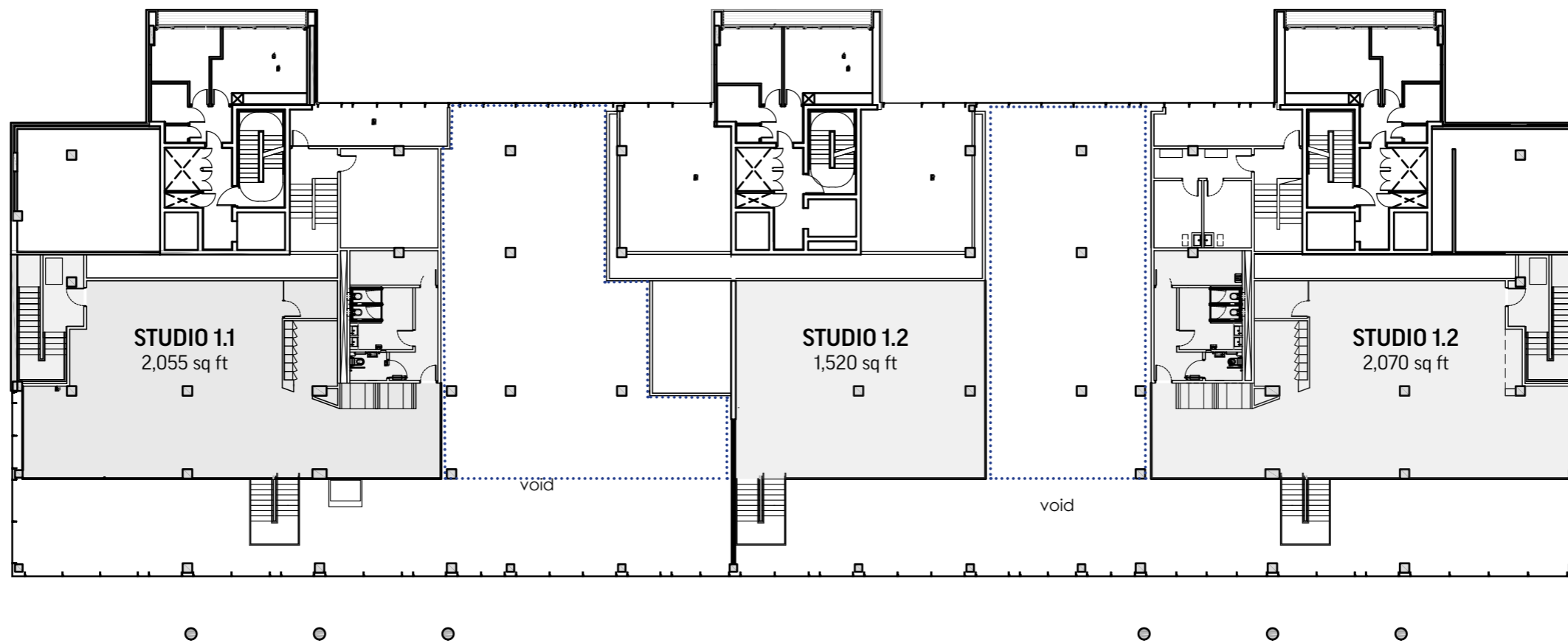


WEST DOCK BASE PLANS

2 UNIT OPTION

MEZZANINE LEVEL

MEZZANINE LEVEL:
5,645 sq ft

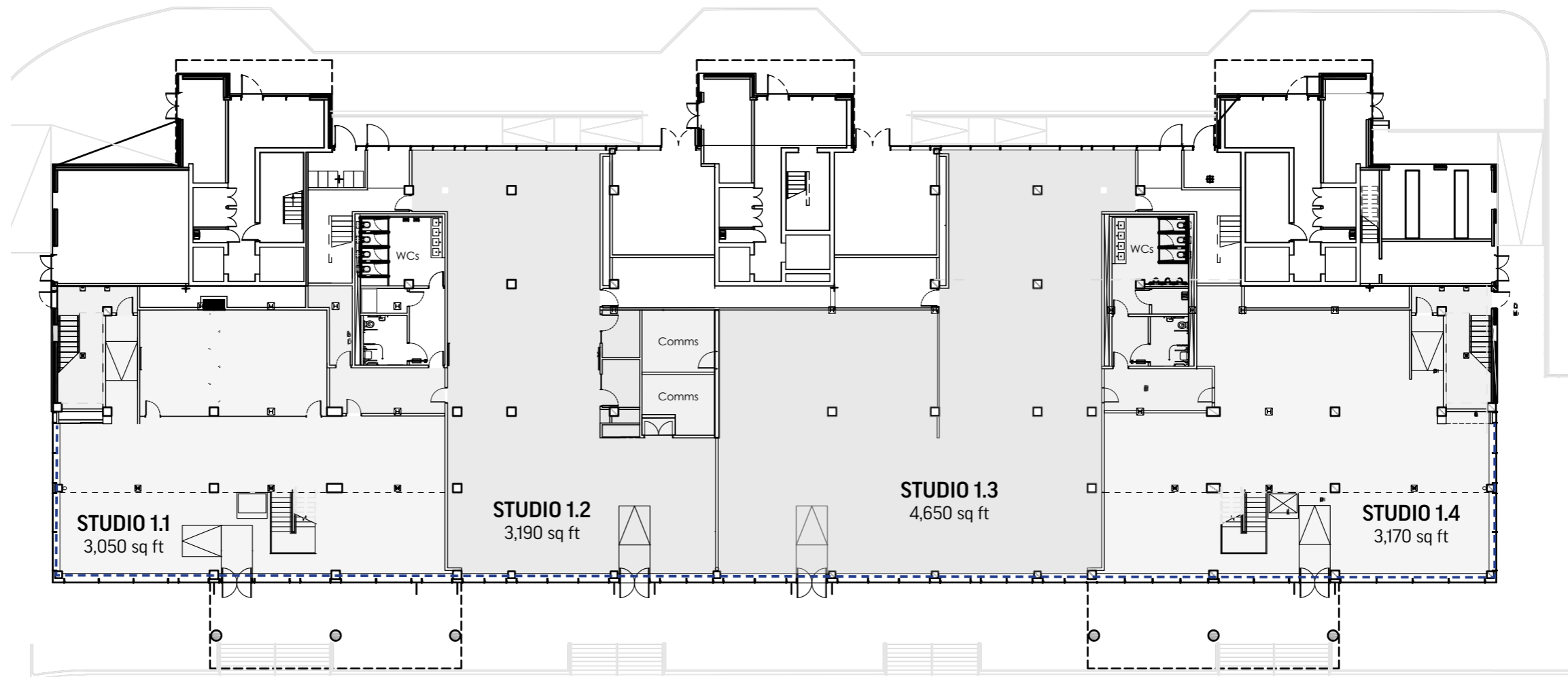


WEST DOCK BASE PLANS

4 UNIT OPTION

GROUND LEVEL

GROUND LEVEL:
14,060 sq ft

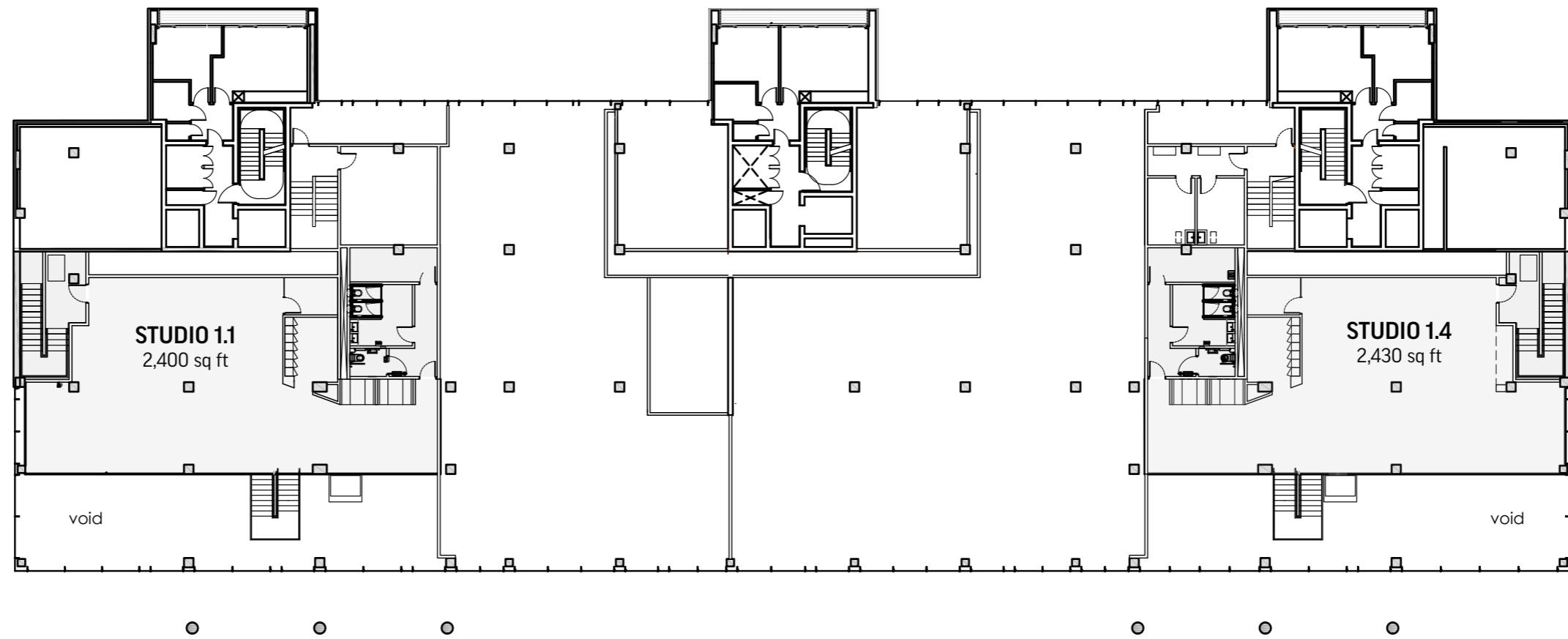


WEST DOCK BASE PLANS

4 UNIT OPTION

MEZZANINE LEVEL

MEZZANINE LEVEL:
4,830 sq ft



WORKSPACE ENQUIRIES

For all workspace leasing enquiries please contact:



EAMON FOX

e: eamon.fox@knightfrank.com

VICTORIA HARRIS

e: victoria.harris@knightfrank.com

knightfrank.com



DUNCAN SENIOR

e: dsenior@wsbproperty.co.uk

ROBIN BEAGLEY

e: rbeagley@wsbproperty.co.uk

wsbproperty.co.uk

LEEDS DOCK CONTACT

ALLIED LONDON

LEEDS

Leeds Dock

The Boulevard

Leeds

LS10 1PZ

LONDON

7-8 Savile Row

Mayfair

London

W1S 3PE

MANCHESTER

18 Lower Byrom Street

Bonded Warehouse

Manchester

M3 4AP

alliedlondon.com

Misrepresentation Act. Allied London gives notice that (1) These particulars are a general outline only, for the guidance of prospective investors, purchasers or tenants, and do not constitute the whole or any part of an offer or contract; (2) Allied London cannot guarantee and accepts no liability whatsoever for the accuracy of any description, dimensions, references to condition, necessary permissions for use and occupation and other details contained herein and prospective purchasers or tenants must therefore not rely on them as agent, advisor or other representative statement of fact or representations and must satisfy themselves as to their accuracy; (3) No employee of Allied London has any authority to make or give any representations or warranty or enter into any contract whatever in relation to the property; (4) Rents quoted in these particulars may be subject to VAT in addition and (5) Allied London will not be liable, in negligence or otherwise, for any loss arising from the use of these particulars; (6) Space planning contained in this brochure is indicative only and may require modifications to the building design; (7) All floor plans are not to scale and are for identification purpose only and (8) all CGIs are indicative of the building and site only and are not an exact representation of the completed building. Design by Allied London 2024.

**LEEDS
CREATIVE
DISTRICT**

LEEDS DOCK