



To Let

First Floor, Unit 2 St James' Business Park

Grimbald Crag Court, Knaresborough, North Yorkshire HG5 8QB

- 123.28 sq m (1,327 sq ft) plus 5 on-site parking spaces
- 2 miles from Knaresborough town centre
- 5 minute walk from St James' retail park
- 3.5 miles from Junction 47 A1(M)

0113 246 1533

9 Bond Court, Leeds LS1 2JZ
email: leeds@knightfrank.com



Location

The property is located on A59 between Harrogate and Knaresborough. Approximately 2 miles from Knaresborough town centre and 7 miles from Harrogate town centre and 3.5 miles from Junction 47 of the A1 M which links onto the M1 and M62 Motorways and the local commercial centres of Leeds and York.

The subject offices are situated within St James' Business Park off Grimbald Cragg Court adjacent to the Knaresborough by-pass and adjoining St James' retail park where occupiers include Marks & Spencer Foodhall, Next, Boots, Costa, McDonalds and Matalan.

Specification

The first floor offices which are open plan have been fitted out to a good standard specification to include for:-

- Suspended ceilings with recessed lighting
- Double glazed windows
- Full access raised floors
- Fully fitted kitchen including dishwasher, fridge, sink and storage
- Male, female and disabled toilet facilities
- 5 person Aritco lift



Accommodation

The offices have been measured to have a net internal floor area of approximately 1,327 sq ft.

Car parking

There are 5 car parking spaces allocated to the offices.

Lease Terms

The property is available to let by way of a new full repairing and lease for a term to be agreed.

Rent

The offices are available to let at a rent of £14.50 psf pa exclusive.



Energy Performance Certificate

The property has an EPC rating of C (69). The recommendation report and full certificate can be provided on request.

Business Rates

The offices have been assessed as a whole and will need to be separately assessed on occupation. Please note that the offices as a whole have a total Rateable Value of £38,250.

We recommend all interested parties to make their own enquiries of the Valuation Office.

Service Charge & Insurance

The suite is subject to an annual service and estate charge and insurance premium payable quarterly in advance from the date of occupation. Further details available upon request.

Legal Costs

Each party to be responsible for their own legal costs incurred in the preparation and completion of the legal documentation.

VAT

The rent quoted is exclusive of any VAT the vendor may choose or have a duty to impose.

Viewing & Further Information

Strictly by appointment with the sole letting agents:

Contact: Elizabeth Ridler

Email: elizabeth.ridler@knightfrank.com

Tel: 0113 297 2427

Contact: Victoria Harris

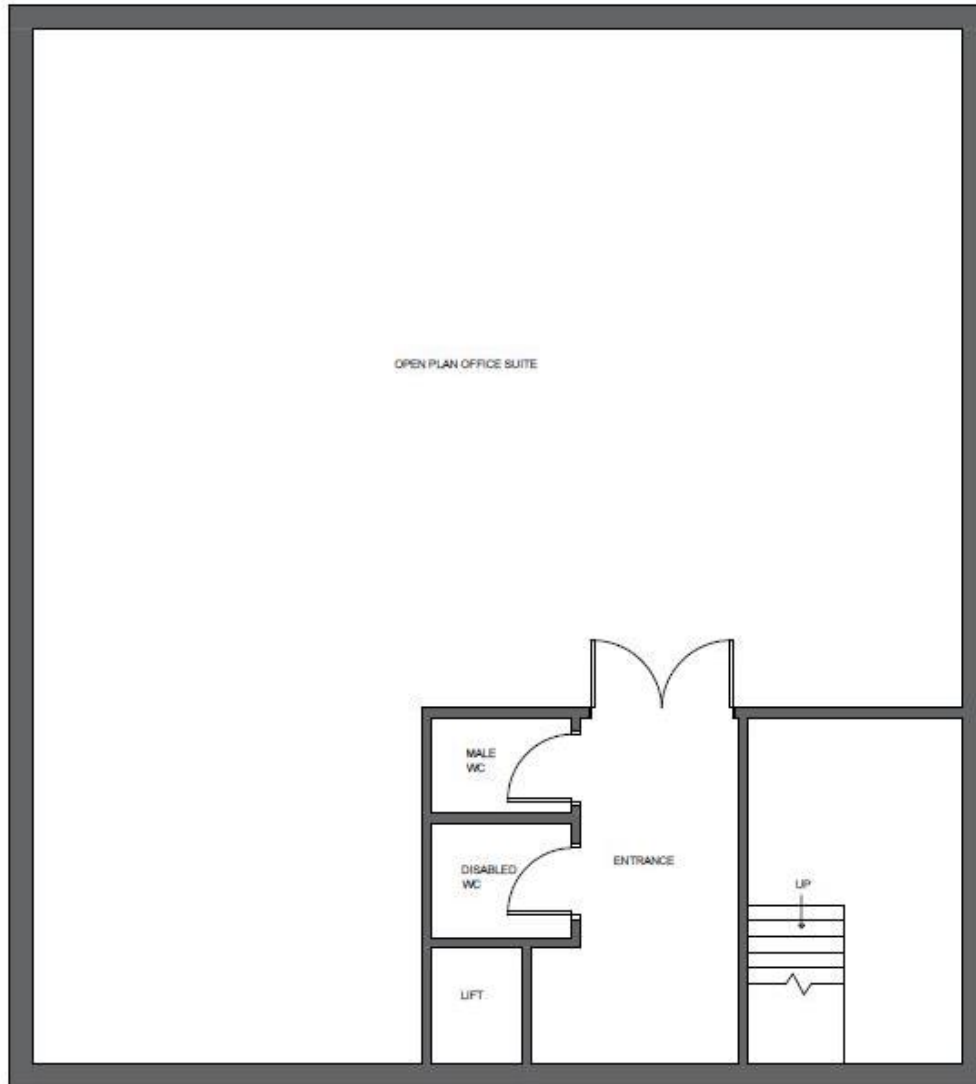
Email: victoria.harris@knightfrank.com

Tel: 0113 297 2448

Subject to Contract

Photographs: January 2019

Particulars: August 2020



First Floor Layout

NB: This is an indicative plan.

IMPORTANT NOTICE

- (1) Particulars: These particulars are not an offer or contract, nor part of one. Any information about price or value contained in the particulars is provided purely as guidance, it does not constitute a formal valuation and should not be relied upon for any purpose. You should not rely on statements by Knight Frank in the particulars or by word of mouth or in writing ("information") as being factually accurate about the property, its condition or its value. Neither Knight Frank LLP nor any joint agent has any authority to make any representations about the property. No responsibility or liability is or will be accepted by Knight Frank LLP, seller(s) or lessor(s) in relation to the adequacy, accuracy, completeness or reasonableness of the information, notice or documents made available to any interested party or its advisers in connection with the proposed transaction. All and any such responsibility and liability is expressly disclaimed.
- (2) Photos, Videos etc: The photographs, images, property videos and virtual viewings etc. show only certain parts of the property as they appeared at the time they were taken. Areas, measurements and distances given are approximate only.
- (3) Regulations: Any reference to alterations to, or use of, any part of the property does not mean that any necessary planning, building regulations or other consent has been obtained. A buyer or lessee must find out by inspection or in other ways that these matters have been properly dealt with and that all information is correct.
- (4) VAT: The VAT position relating to the property may change without notice.
- (5) Financial Crime: In accordance with the Money Laundering, Terrorist Financing and Transfer of Funds (Information on the Payer) Regulations 2017 and Proceeds of Crime Act 2002 Knight Frank LLP may be required to establish the identity and source of funds of all parties to property transactions.
- (6) To find out how we process Personal Data, please refer to our Group Privacy Statement and other notices at <https://www.knightfrank.com/legals/privacy-statement>.

[Particulars dated [August 2020]. Photographs and videos dated [January 2019].]

Knight Frank is the trading name of Knight Frank LLP. Knight Frank LLP is a limited liability partnership registered in England and Wales with registered number OC305934. Our registered office is at 55 Baker Street, London W1U 8AN where you may look at a list of members' names. If we use the term 'partner' when referring to one of our representatives, that person will either be a member, employee, worker or consultant of Knight Frank LLP and not a partner in a partnership.