

**EAST DOCK**

**LEEDS  
CREATIVE  
DISTRICT**

**LEEDS DOCK**

SUMMARY INFORMATION

# A VARIETY OF WORKPLACES:

**ALL SIZES**

**ALL GENRES**








**ALL FITTED**

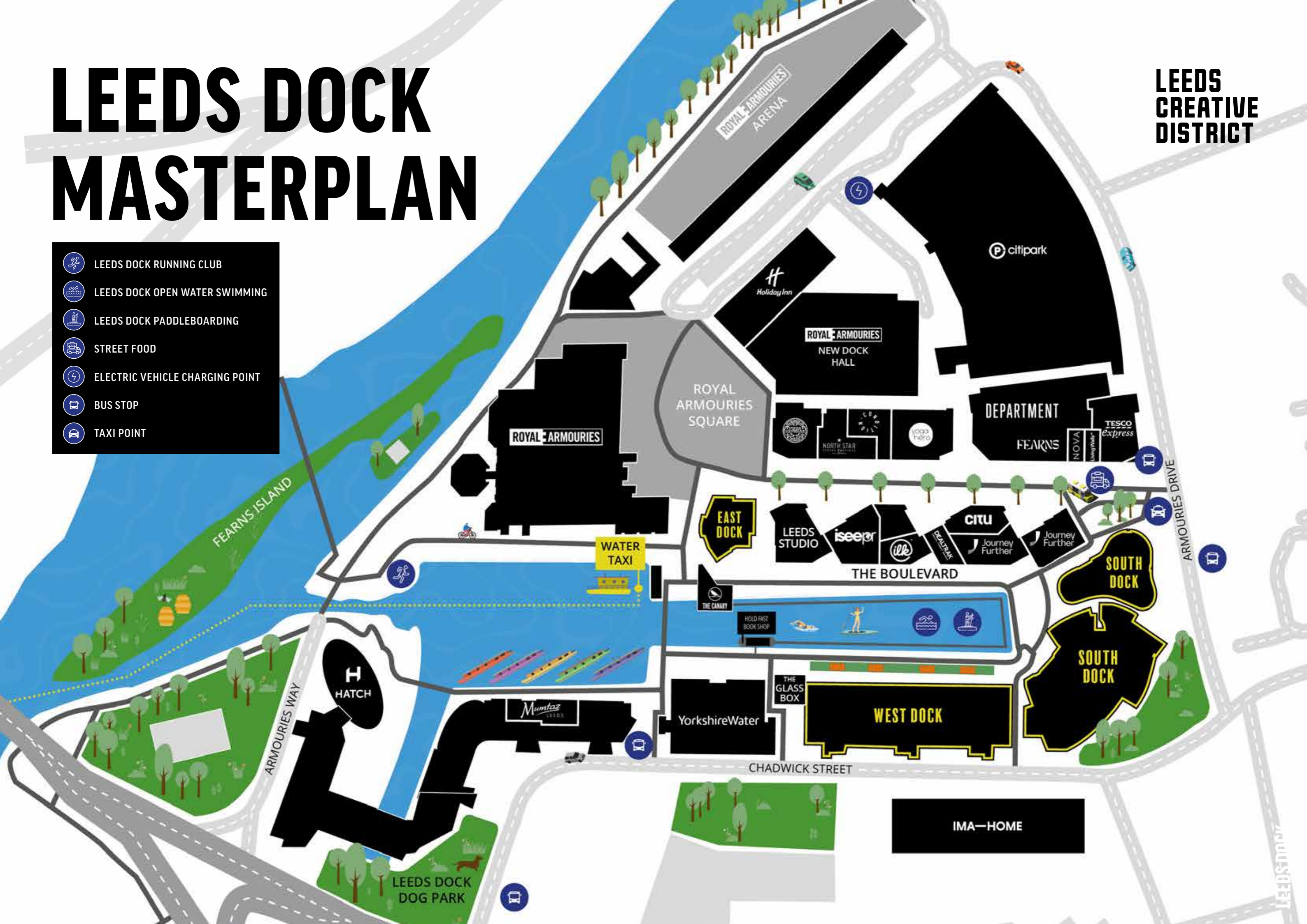
**ALL SERVICED**

Leeds Dock offers a diverse range of fully-fitted and fully-serviced workspaces, driven by a commitment to excellence in service, sustainability, resilience, and amenity. These elements foster a distinctive vibrancy within the community, energising its atmosphere with innovation and collaboration.

# LEEDS DOCK MASTERPLAN

LEEDS CREATIVE DISTRICT

-  LEEDS DOCK RUNNING CLUB
-  LEEDS DOCK OPEN WATER SWIMMING
-  LEEDS DOCK PADDLEBOARDING
-  STREET FOOD
-  ELECTRIC VEHICLE CHARGING POINT
-  BUS STOP
-  TAXI POINT



# EAST DOCK

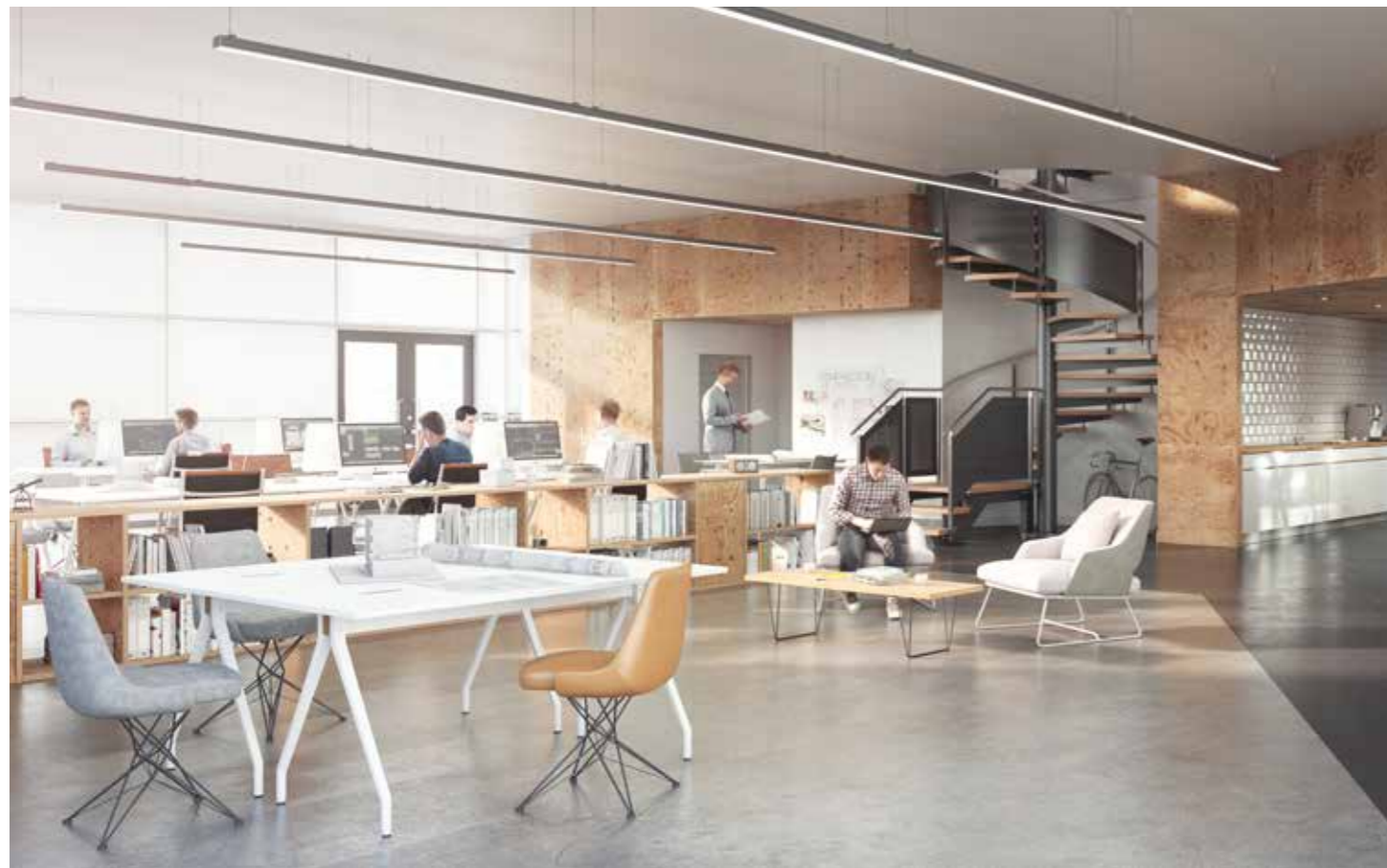
## ICONIC FLAGSHIP WORKSPACE

**GROUND & LEVEL ONE**  
**5,295 SQ FT | 490 SQ M**

East Dock sits proudly in the heart of Leeds Dock with its timber exterior and unique shape. A host of successful digitally themed projects have taken place in East Dock including Google's Digital Garage, helping SMEs become more visible online, and The Lumen Prize Exhibition, an immersive digital art collection. East Dock has a flexible open plan feel making it ideal for events and collaborative working. The ground floor and first floor provide incredible views of the waterfront of Leeds Dock creating a unique space in the City.

### UNIQUE FLEXIBLE WATERFRONT SPACE

East Dock provides 5,296 sq ft of self-contained creative workspace offering unrivalled profile and prominence at the water's edge. East Dock is a statement standalone building and could be your new statement workspace.

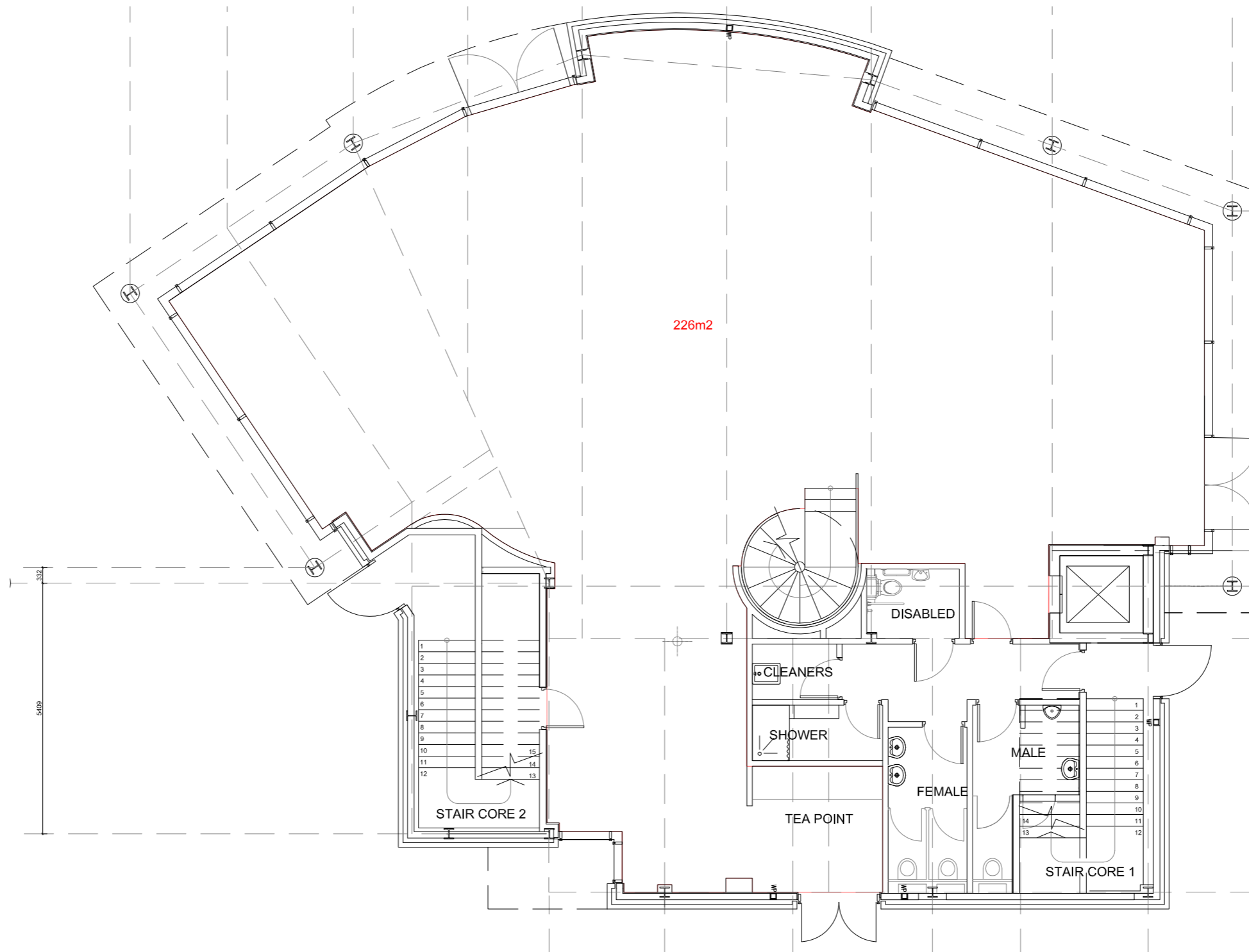


# EAST DOCK PROPOSED BASE PLANS

GROUND LEVEL

SINGLE UNIT

2,433 sq ft

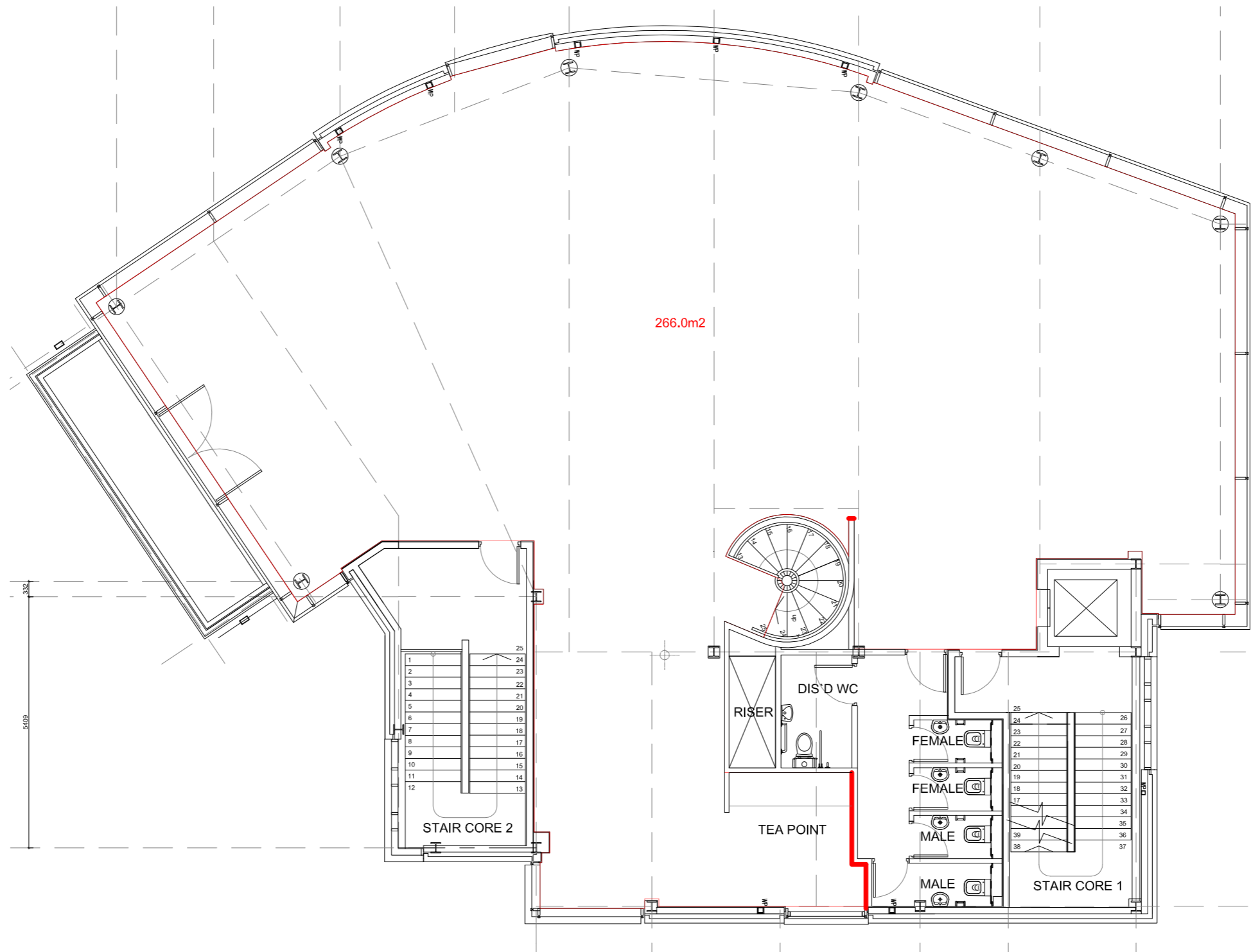


# EAST DOCK PROPOSED BASE PLANS

MEZZANINE LEVEL

SINGLE UNIT

2,863 sq ft



**THIS IS THE:**

**LEEDS**

**CREATIVE**

**DISTRICT**

# LEEDS DOCK