

A modern office lounge area featuring a long brown leather sofa, green armchairs, and white tables. A large vertical green wall is on the left, and a wooden slat ceiling with a glowing circular light fixture is above. A reception desk and blue chairs are visible in the background.

SOUTH CENTRAL

75,338 sq ft High-Quality Office Accommodation To Let
526 car parking spaces | Excellent location and transport links | Spacious, green site

[South Central, Global Avenue, Millshaw Court, Leeds LS11 8PG](#)



Say hello to South Central.

We're making work-life monumental with a creatively reimagined workspace.

South Central offers newly refurbished, high quality office accommodation in an excellent location. The building occupies a spacious, leafy site in close proximity to White Rose Shopping Centre and the imminent new White Rose Train Station.

[Introduction](#)

[Location & Transport](#)

[Amenities](#)

[Sustainability](#)

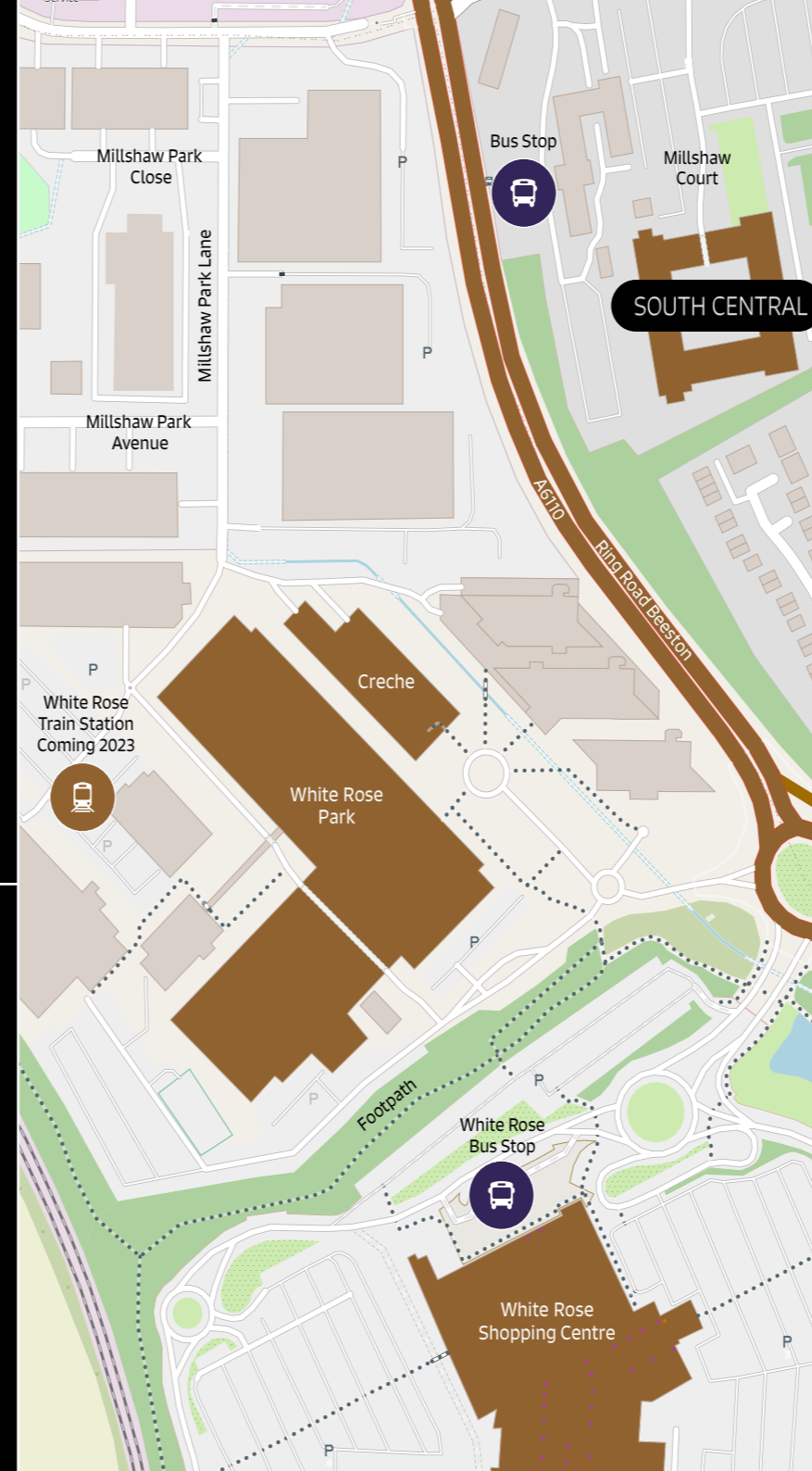
[Specification](#)

[Availability](#)

[Contact](#)

When location is essential. Be perfectly perched at South Central.

With an elevated position and impressive views of the surrounding area, South Central is a perfectly positioned destination.



Car

Located on the A6110 just 1.5 miles from Junction 1 of the M621 and 2.6 miles from Junction 28 of the M62, South Central has excellent access to the region's Motorway network. The development also boasts unrivalled access via car, with one of the highest car parking ratios in the City (1:180 sq ft).

*Additional spaces available by way of a separate licence agreement.



Train

The new White Rose Train Station (opening Summer 2023) will be within a 10 minute walk of South Central. The new station will provide direct links to Leeds City Centre (4 minutes journey time) and Manchester (60 minutes journey time).



Bus

There are regular bus services to and from the nearby White Rose Shopping Centre, the largest bus terminal outside of the City Centre, is located 0.6 miles from South Central.



Introduction

Location & Transport

Amenities

Sustainability

Specification

Availability

Contact

Located 3 miles to the south of Leeds centre, it benefits from excellent transport links.



[Introduction](#)

[Location & Transport](#)

[Amenities](#)

[Sustainability](#)

[Specification](#)

[Availability](#)

[Contact](#)

Where work-life balance is fundamental. Enjoy exceptional amenities at South Central.

Introduction

Location & Transport

Amenities

Sustainability

Specification

Availability

Contact

South Central has been thoughtfully designed around themes of wellbeing, interaction and Sustainability.

The focus has been on creating modern, stylish and welcoming workspaces while minimally impacting our environment.



Outdoor communal spaces



Café



High quality changing rooms & shower facilities



Secure cycle storage

Introduction

Location & Transport

Amenities

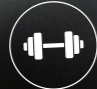
Sustainability

Specification


Availability

Contact



 On-Site gym



 EV charging points



 Fibre ready connectivity



Sustainability

- Gas free environment
- Electricity sourced from UK based wind and solar farms
- EV charging points
- EPC:A
- Cycle facilities
- Onsite greenery focused on enabling local wildlife
- Energy efficient lighting and heating / cooling system
- Eco toilets
- FSC sourced timber
- Water saving showers, taps and toilets
- Rainwater harvesting

Introduction

Location & Transport

Amenities

Sustainability

Specification

Availability

Contact

Introduction

Location & Transport

Amenities

Sustainability

Specification

Availability

Contact

Specification

With specification to make others resentful
Make yourself comfortable at South Central



Recycled raised access floors



Exposed Services maximising floor to ceiling heights



Low energy consumption electric air-sourced heat pump (VRV) heating and air conditioning



Energy efficient mechanical supply and extract ventilation with heat recovery

Introduction

Location & Transport

Amenities


Sustainability

Specification


Availability

Contact



 LED Lighting with daylight saving



 Occupational densities of 1:10 sq m with the ability to increase to 1:6 sq m



 Secure WIFI

Floorplans & Availability

Introduction

Location & Transport

Amenities

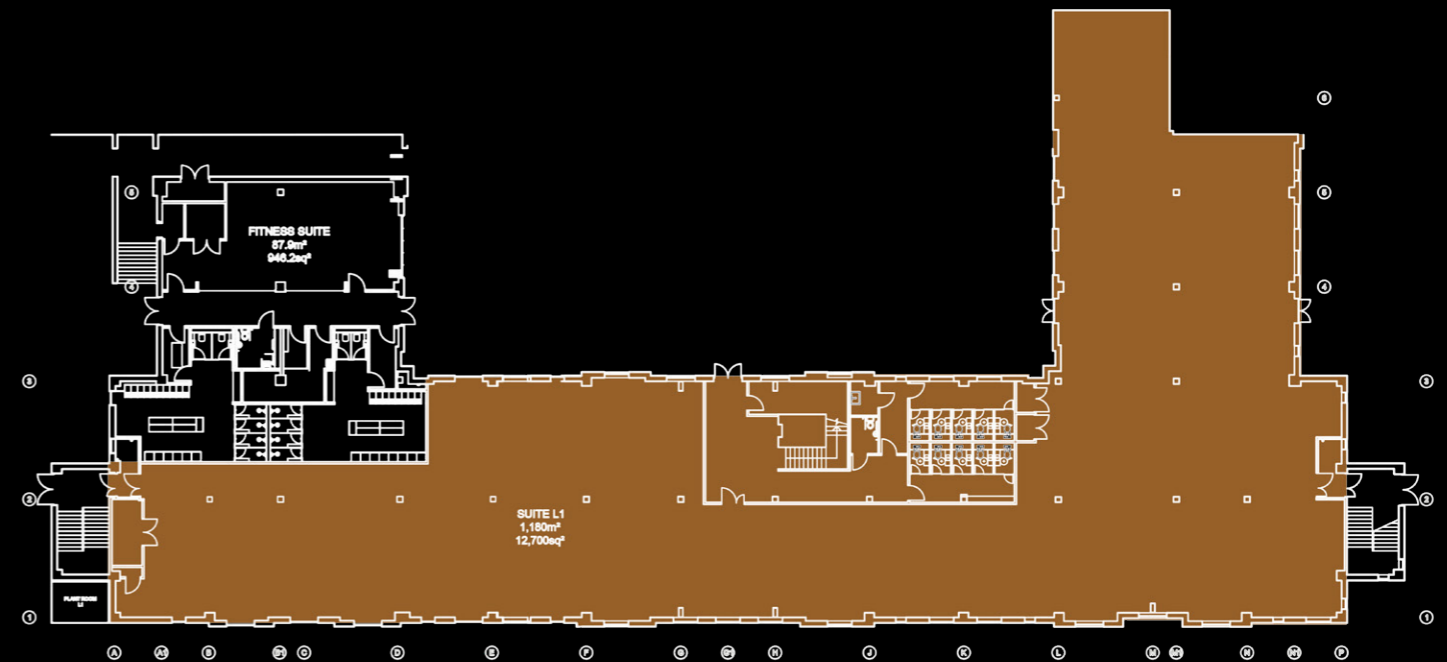
Sustainability

Specification

Availability

Contact

Garden Level



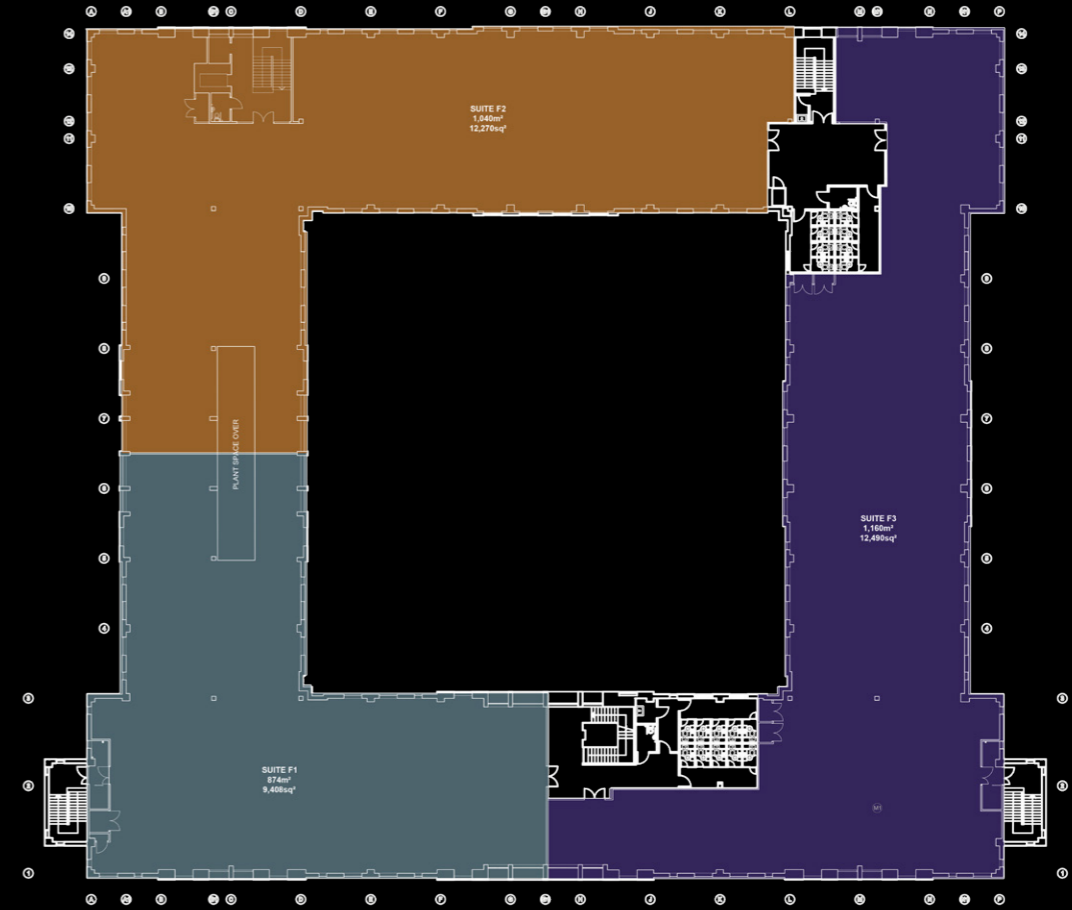
● Suite 1: 1,180 sq m / 12,700 sq ft

Ground Floor



- Suite G1: 720 sq m / 7,790 sq ft
- Suite G2: 1,022 sq m / 11,000 sq ft
- Suite G3: 474 sq m / 5,100* sq ft **LET**
- Suite G4: 630 sq m / 6,780 sq ft

First Floor



- Suite F1: 874 sq m / 9,408 sq ft
- Suite F2: 1,040 sq m / 12,270 sq ft
- Suite F3: 1,160 sq m / 12,490 sq ft

- Introduction
- Location & Transport
- Amenities
- Sustainability
- Specification
- Availability**
- Contact



- Introduction
- Location & Transport
- Amenities
- Sustainability
- Specification
- Availability
- Contact

Extra Info

Tenure:

The accommodation is available by way of a new effective Full Repairing and Insuring Lease for a term of years to be agreed. Further information on request.

Legal Costs:

Each party is to be responsible for its own legal costs incurred in any transaction.

Contact

Viewings:

For all leasing enquiries or an appointment to view, please **contact us**

South Central, Global Avenue, Millshaw Court, Leeds LS11 8PG



Eamon Fox

Eamon.Fox@knightfrank.com

0113 297 2433

Victoria Harris

Victoria.Harris@knightfrank.com

0113 297 2448



Alex Hailey

Alex.Hailey@cbre.com

0113 394 8814

Clair McGowan

clair.mcgowan@cbre.com

0113 394 8878

MISREPRESENTATION ACT These particulars do not constitute part of an offer or contract. All descriptions, dimensions, reference to condition and necessary permission for use and occupation and other details contained herein are for general guidance only and prospective purchasers or tenants should not rely on them as statements or representations of fact and must satisfy themselves as to their accuracy. Neither CBRE / Knight Frank, nor its employees or representatives have any authority to make or give any representation or warranty or enter into any contract in relation to the property. Rents quoted in these particulars may be subject to VAT in addition. The reference to any mechanical or electrical equipment or other facilities at the property shall not constitute a representation (unless otherwise stated) as to its state or condition or that it is capable of fulfilling its intended function and prospective tenants/purchasers should satisfy themselves as to the fitness of such equipment for their requirements. Prices/rents quoted in these particulars may be subject to VAT in addition. a) These particulars were prepared from preliminary plans and specifications before the completion of the properties and are intended only as a guide. They may have been changed during construction and final finishes could vary. Prospective purchasers should not rely on this information but must get their solicitor to check the plans and specifications attached to their contract. b) We have not made any investigations into the existence or otherwise of any issues concerning pollution of land, air or water contamination and the purchaser is responsible for making his own enquiries in this regard. June 2022.