



Caledonian Exchange

1,799 – 10,237 sq ft (167 – 951 sq m)




Face Forward

The striking appearance of the building, successfully complements some of the more traditional architectural designs adopted elsewhere within The Exchange.

Explore the Area



-  Tram Stop
-  Tram Line
-  Train Station
-  Bus Stop
-  Main Bus Routes

2 mins walk to the West End tram stop

2 mins walk to Shandwick Place bus stop
Bus Routes: 12, X12, 31, 26, Airlink 100

3 mins walk to Lothian Road bus stop
Bus Routes: 10, 11, 15, 16, 36, 24

Princes Street Gardens

Waverley

Edinburgh Castle

Haymarket

- 01 Shepherd & Wedderburn, Deloitte, Dentons, Shoosmiths, Lothian Pension Fund, Safferys
- 02 JLL, LogicNow, Colliers, Ryden, Pure Gym, Moody's Analytics
- 03 Phoenix Group
- 04 DLA Piper
- 05 Gilson Gray
- 06 Addleshaw Goddard, Abacus Group, Cornerstone Asset Management
- 07 Burness Paull, Capricorn Energy, Artemis
- 08 Bank of New York Mellon
- 09 Brewin Dolphin, Green Investment Bank, PwC, Alliance Trust, Law Society of Scotland, AON, EY
- 10 Franklin Templeton
- 11 Scottish Widows HQ
- 12 BlackRock, Hymans Robertson
- 13 Lloyds Banking Group, Turcan Connell, Seven Investment Management
- 14 Johnston Carmichael
- 15 Clearwater Analytics, Blackadders, Graham & Sibbald

- 01 Waldorf Astoria
- 02 Johnnie Walker Whisky Experience
- 03 Traverse Theatre
- 04 Usher Hall
- 05 Lyceum Theatre
- 06 Point Hotel
- 07 Odeon Cinema
- 08 Sheraton Grand Hotel, One Spa
- 09 Edinburgh International Conference Centre
- 10 Pure Gym
- 11 Voco Edinburgh
- 12 Hub by Premier Inn
- 13 Leonardo Royal Hotel
- 14 The Haymarket mixed use development



- sandwiches
- soups
- breakfast
- salad boxes
- hot melts

Caledonian Exchange

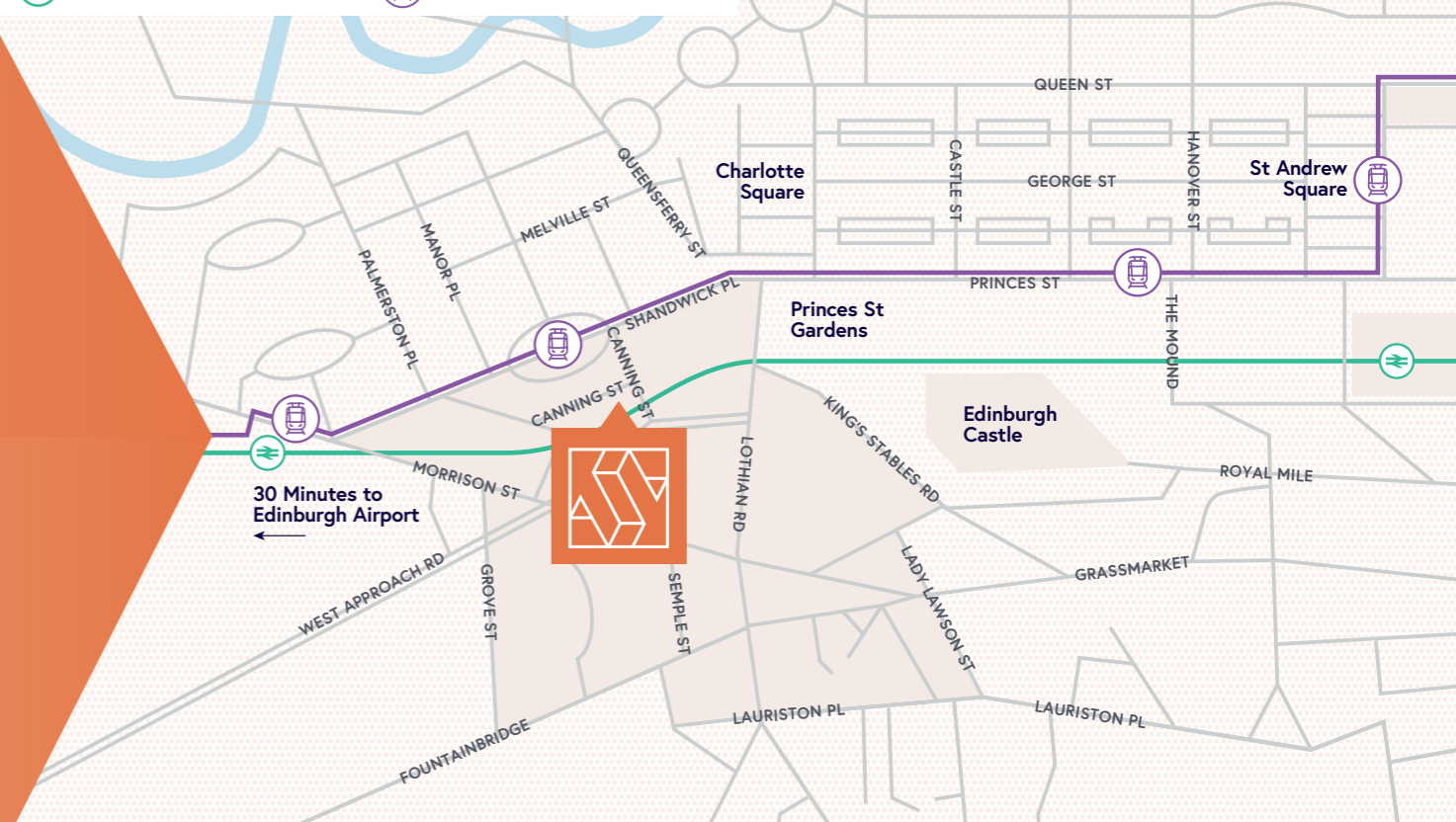


Going Places

Caledonian Exchange occupies a high profile site clearly visible on the approach to the city centre via the West Approach Road. The nearby tram service offers fast and easy access, providing a direct route to Edinburgh Airport from the 'West End' halt, Shandwick Place. The location ensures immediate and convenient access to a full range of restaurants, bars, cafés and shops both within the Exchange area and, only a short distance away, the West End leading onto Princes Street.

Edinburgh's two main railway stations are within easy walking distance with Haymarket being only approximately 5 minutes' walk via Torphichen Street. Haymarket is now Edinburgh's main transport interchange with access to train, tram and bus routes across the city.

Train Station
 Train Line
 Tram Station
 Tram Line



Workspace that really Works

The vacant space has excellent natural daylight. The ground floor provides modern good quality open plan accommodation benefiting from an existing fit out, air conditioning and an intercell raised floor while the 2nd floor is refurbished to provide a 'defurbished' feel with exposed ceiling and ductwork, new air conditioning, LED lighting and an intercell raised floor. The computerised building management system ensures an efficient use of energy and creates a pleasant working environment.

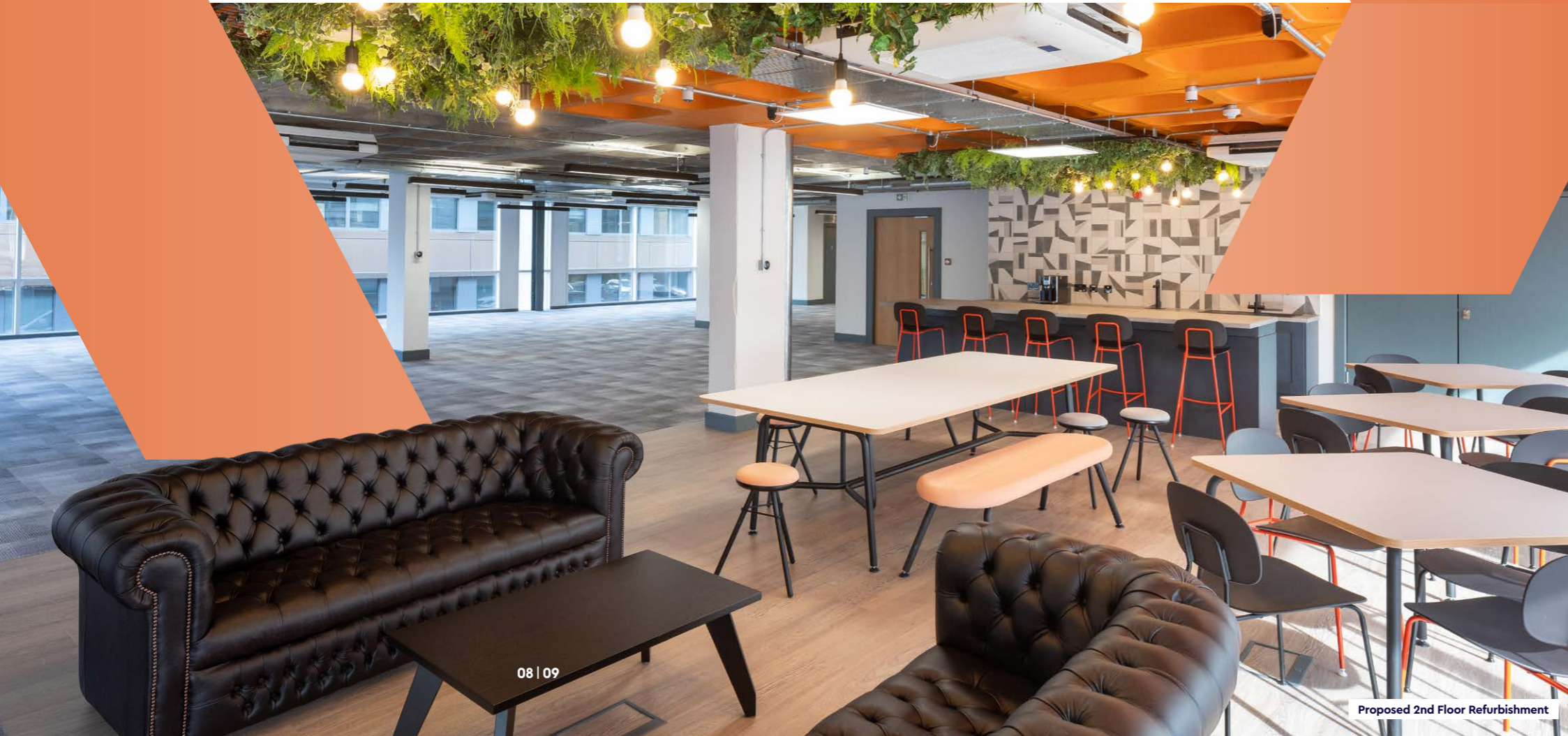


CGI of Proposed New Reception Area

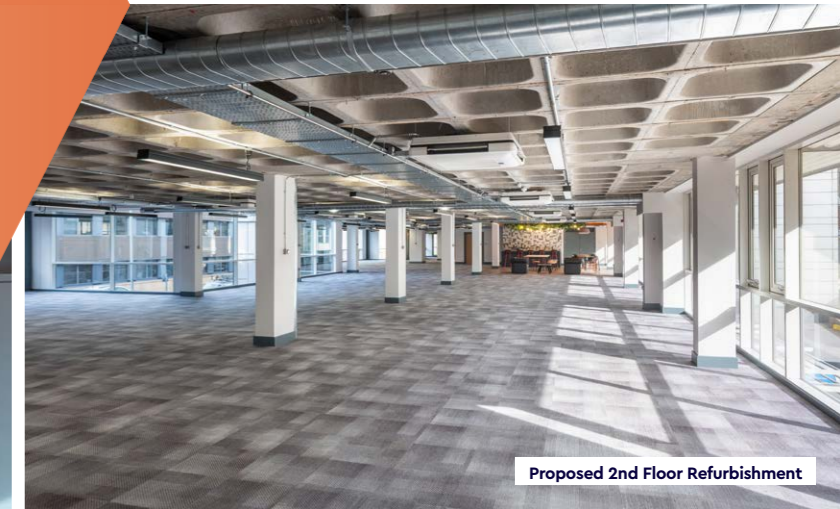
The common parts of the building are about to undergo a comprehensive refurbishment. This will include the reception area and the creation of new WCs, shower facilities, drying room and secure bike storage.

The building benefits from a generous car parking provision to the front and rear of the property. In addition, secure, covered cycle racks are provided and shower facilities.

Existing occupiers within Caledonian Exchange include Dalmore Capital, Motorola, Lindsays and Ciena.



Proposed 2nd Floor Refurbishment

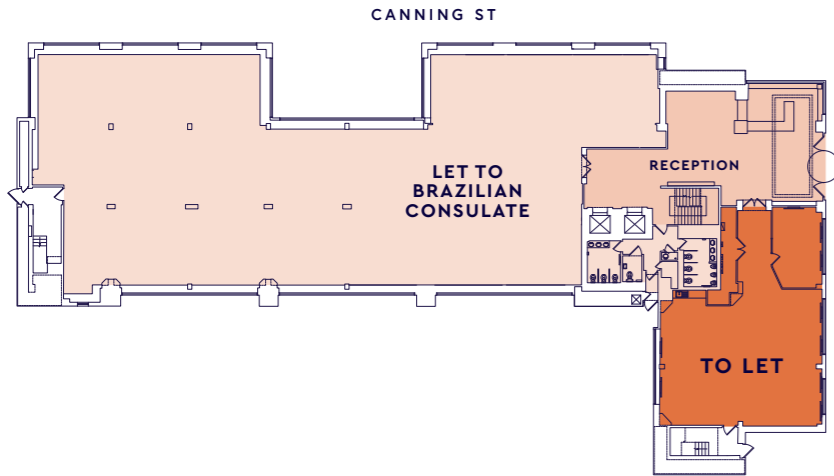


Proposed 2nd Floor Refurbishment



CGI of Shower / Changing Area

Existing Ground Floor Office Layout



Specified for Success

Specification:

Ground floor

- 4 pipe fan coil air conditioning with an energy efficient low velocity displacement cooling system to the main office area
- Intercell raised access floor
- Metal tiled suspended ceiling
- Existing fit out available
- Potential to create own dedicated entrance

2nd floor Specification

- Ceiling mounted VRV air conditioning
- Intercell raised access floor
- Strip LED lighting
- Fully fitted kitchen facility
- Exposed ductwork and ceiling providing a 'defurbished' feel
- New carpets and decoration
- Full height glazing
- EPC Rating of B

General building specification:

- New double height reception area
- Refurbished 2 x 13 person Otis passenger lifts serving all floors
- Refurbished high quality male and female toilets
- Shower facilities
- Drying room
- Lockers
- Secure cycle racks
- Building management system
- Manned reception area with additional CCTV security system
- Parking spaces available



CGI of Shower / Changing Area

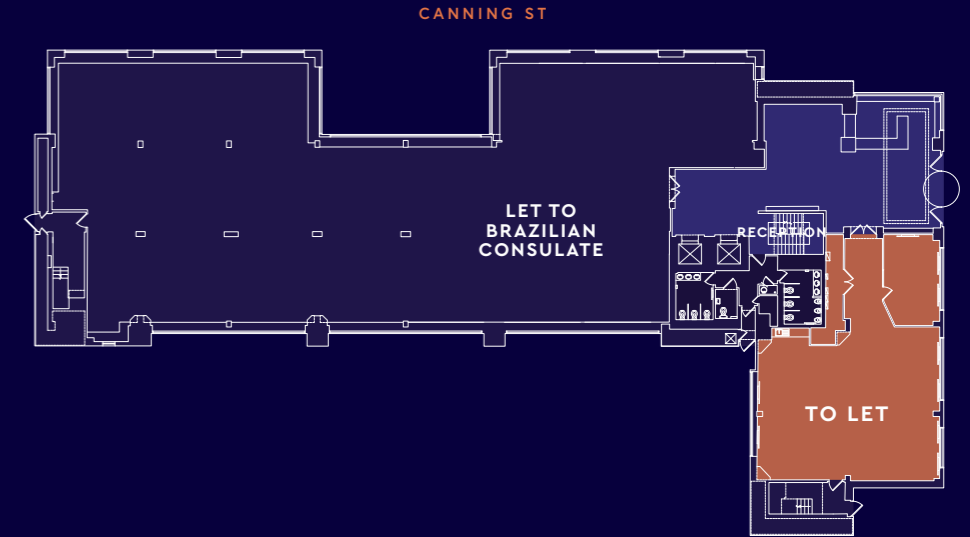


Proposed 2nd Floor Refurbishment

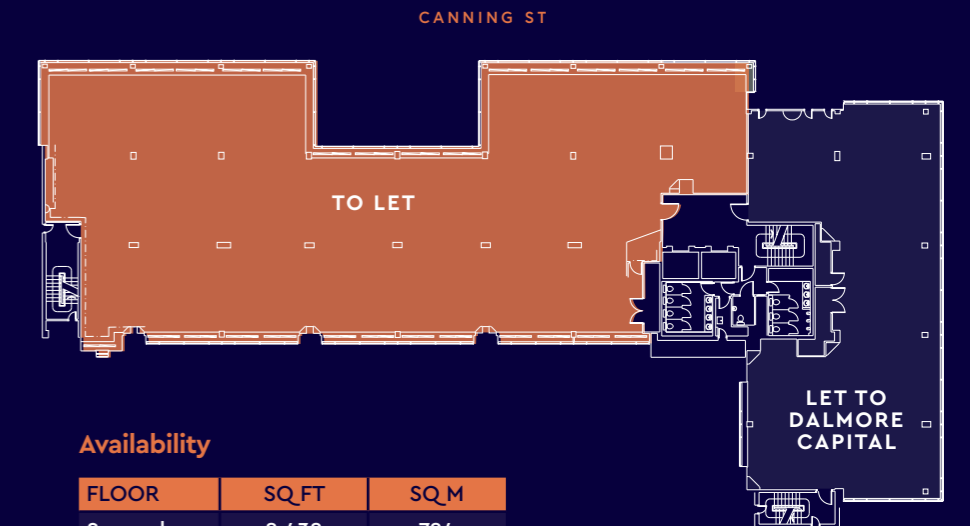
Inspirational Environment

The subjects have been measured in accordance with the RICS Code of Measuring Practice (6th Edition) and provide the following net internal areas:

Ground Floor



Second Floor



Availability

FLOOR	SQ_FT	SQ_M
Second	8,438	784
Ground	1,799	167
TOTAL	10,237	951



Viewing & Further Information

Please contact the joint letting agents:



0131 222 9601

[KnightFrank.co.uk](https://www.knightfrank.co.uk)

Simon Capaldi
simon.capaldi@knightfrank.com
07770 012 255

Chrissie Clancy
chrissie.clancy@knightfrank.com
07790 974 571



0131 226 2641

www.eyco.co.uk

Neil McConnachie
nmcconnachie@eyco.co.uk
07818 062 736

Neil Gordon
ngordon@eyco.co.uk
07974 375 823

[calexchange-edinburgh.com](https://www.calexchange-edinburgh.com)

DISCLAIMER: Knight Frank and EYCO LLP on their behalf and for the Vendors or Lessors of this property whose Agents they are, give notice that: 1. These particulars are set out as a general outline only for guidance to intending Purchasers or Lessees, and do not constitute any part of an offer or contract. 2. Details are given without any responsibility and intending Purchasers, Lessees or Third Parties should not rely on them as statements or representations of fact, but must satisfy themselves by inspection or otherwise as to the correctness of each of them. No person in the employment of Knight Frank or EYCO LLP has any authority to make any representation or warranty whatsoever in relation to this property. 3. Unless otherwise stated, all prices and rents are quoted exclusive of VAT. 4. All areas, plans and images are for indicative purposes only and subject to planning. Date of publication: March 2024.