

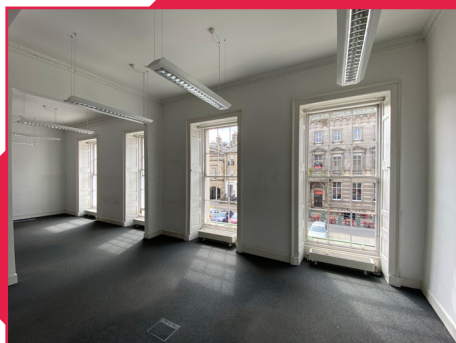
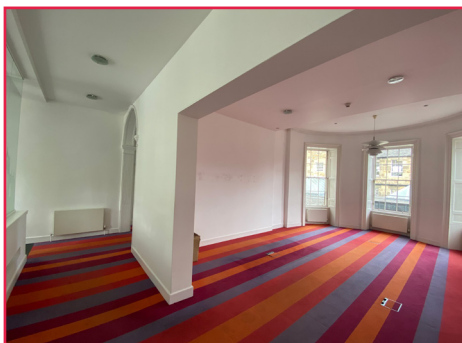
# TO LET

## Office Suite



### 59 George Street, Edinburgh, EH2 2JG

- Primely situated office accommodation measuring 228 Sq. M (2,455 Sq. Ft.)
- Located in the heart of Edinburgh city centre
- Close proximity to numerous shops, restaurants, bars and retail locations
- Excellent transport links



0131 222 9601

[KnightFrank.co.uk/edinburgh](https://www.KnightFrank.co.uk/edinburgh)

2 Castle Terrace, Edinburgh, EH1 2EL

# 59 GEORGE STREET, EDINBURGH, EH2 2JG

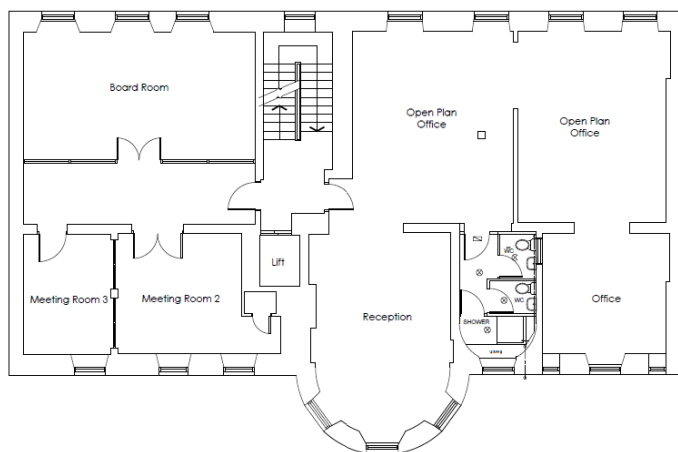


## Location

Edinburgh is Scotland's capital city with a population of approximately 500,000. The city is located 45 miles east of Glasgow and benefits from an excellent communications system with transport links by road, rail and air to many of the major cities within the UK.

59 George Street is positioned in a prime city centre location on the south side of George Street and the corner of Fredrick Street. Situated in the heart of Edinburgh's Golden Rectangle the property is centrally located between Charlotte Square to the west with St Andrew Square to the east. The building benefits from positioning in a much sought-after location with an exceptional variety of restaurants, bars, hotels, cafés and retail stores including Abercrombie & Fitch, Lulu Lemon, Hollister, FatFace and The White Company within immediate proximity. The property location allows for ease of travel in and around the city with short walking journeys to both tram and bus stops, as well as train services with Edinburgh Waverley Station situated under a 10-minute walk away.

## Floor Plan



This is an indicative plan and is not to scale

## Description

59 George Street is of stone construction spread across five floors, featuring retail space on the ground floor and basement, along with office space on the three upper levels. The first floor totals an NIA of 2,455 sq ft and is accessed from its prominent central location on George Street. The property has the advantage of a lift operating from the first floor landing inside the building, accessed from the street by several stairs. Current tenant fit out includes partitioning creating various separate meeting and small private office rooms. The suite currently benefits from amenities including:

- Meeting rooms
- Private office rooms
- Scheduled landlord works to include two toilets in addition to a shower within the suite (as shown on above plan)
- Suspended timber flooring with floor boxes

## Accommodation

The suite has been measured in accordance with the RICS Code of Measuring Practice (6th Edition) on a Net Internal Area and comprises the following areas.

Description	Sq. M.	Sq. Ft.
First Floor	228	2,455
<b>Total</b>	<b>228</b>	<b>2,455</b>

## EPC

The property benefits from the following Energy Performance Certificate Rating: D(53)

The EPC for the property is required to be reassessed.

## Lease Terms

The accommodation is available to let on a new Full Repairing & Insuring (FRI) lease.

Further information is available on request from the sole letting agent.

## Rateable Value

The rateable value for the property is required to be reassessed.

## Entry

The suite is available for entry Q3 2023.

## Legal Costs

Each party will be responsible for their own legal costs incurred in the transaction. Land and Buildings Transaction Tax is the responsibility of the incoming tenant in the normal manner.

## VAT

All prices and premiums are quoted exclusive of VAT.

## Viewing

Viewing of the property and any further information can be provided by the sole letting agent.

Erin Beaton  
[erin.beaton@knightfrank.com](mailto:erin.beaton@knightfrank.com)  
+44 131 322 3084

Simon Capaldi, BSc MRICS  
[simon.capaldi@knightfrank.com](mailto:simon.capaldi@knightfrank.com)  
+44 131 222 9621

## Important Notice

1. **Particulars:** These particulars are not an offer or contract, nor part of one. You should not rely on statements by Knight Frank LLP in the particulars or by word of mouth or in writing ("information") as being factually accurate about the property, its condition or its value. Neither Knight Frank LLP nor any joint agent has any authority to make any representations about the property, and accordingly any information given is entirely without responsibility on the part of the agents, seller(s) or lessor(s).
2. **Photos etc:** Date of photographs taken 20/02/2020. Location map (c) OpenStreetMap. Areas, measurements and distances given are approximate only.
3. **Regulations etc:** Any reference to alterations to, or use of, any part of the property does not mean that any necessary planning, building regulations or other consent has been obtained. A buyer or lessee must find out by inspection or in other ways that these matters have been properly dealt with and that all information is correct.
4. **VAT:** The VAT position relating to the property may change without notice. Viewing by appointment only.