

Large stylized white text on a red background, partially visible as 'ge' and 'at'.

71 George
Street

Exceptional retail/leisure
opportunity in the heart
of Edinburgh

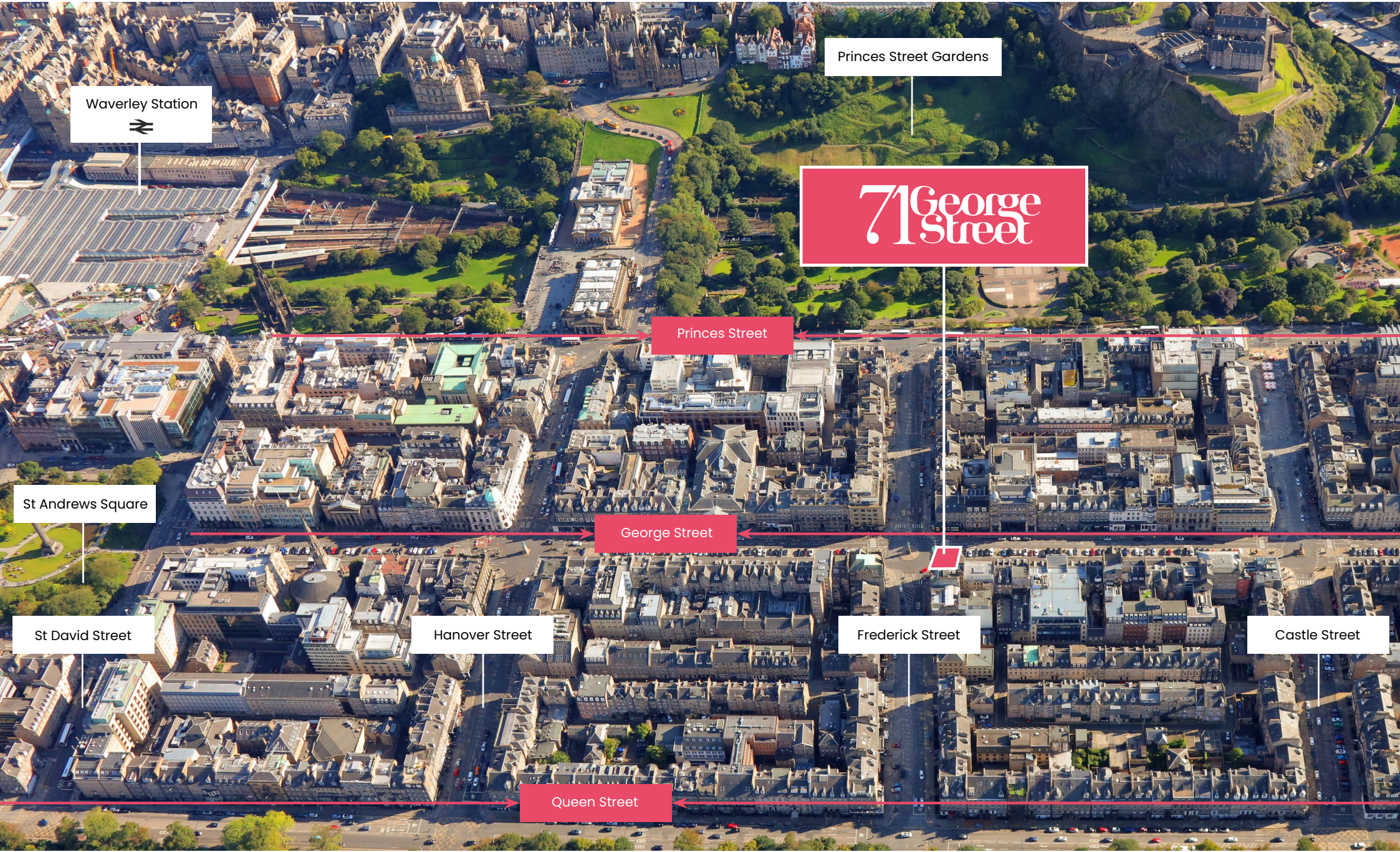
Welcome to the sunny side of the street

71 George Street occupies a prime corner location on Edinburgh's premier shopping street, home to some of the UK's most iconic brands including Aspinalls of London, LK Bennett, Hobbs, Bobbi Brown, TM Lewin, Church's and Anthropologie.

With **3,929 sq ft (365 sq m)** of south facing space over ground and basement levels available to let, this is a rare opportunity within Edinburgh's 'Golden Rectangle'.







Princes Street Gardens

Waverley Station

71 George Street

Princes Street

St Andrews Square

George Street

St David Street

Hanover Street

Frederick Street

Castle Street

Queen Street



The Building

71 George Street is a Grade A listed building comprising basement, ground and four upper levels where there are plans in place to convert the space to luxury serviced apartments.



4

Michelin starred restaurants in Edinburgh



68%

of visitors to Edinburgh surveyed listed Shopping as a key reason for visiting



In the neighbourhood

71 George Street is located close to an outstanding range of hotels, bars, cafes and restaurants, as well as hosting some of the UK's best-known luxury brands.

Edinburgh's vibrant retail and leisure sectors consistently outperform the UK average, and the city welcomes almost 4 million visitors every year.









Getting there



71 George Street has excellent transport links with both Edinburgh Bus Station in St Andrew Square and Waverley Railway Station within a few minutes' walk. The Princes

Street and St Andrew Square tram stops are also a short walk away, and there are numerous bus routes running along George, Princes and Frederick Streets.

-  **2 minute walk**
To nearest bus stop
-  **5 minute walk**
To nearest tram stop

-  **10 minute walk**
To train station
-  **25 minute drive**
To Edinburgh Airport



-  Tram Stop
-  Tram Route
- 1** Jo Malone
- 2** GANT
- 3** Hackett
- 4** Hollister
- 5** All Saints
- 6** Jack Wills
- 7** Church's
- 8** lululemon
- 9** Kiehls
- 10** Laura Ashley
- 11** Hobbs
- 12** Charles Tyrwhitt
- 13** TM Lewin
- 14** Anthropologie
- 15** Molton Brown
- 16** Marks & Spencer
- 17** Jenners
- 18** Harvey Nichols

Accommodation

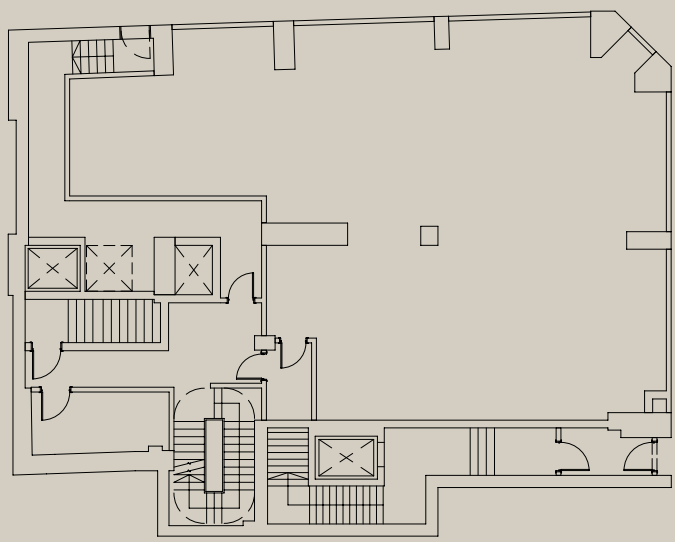
We have measured the subject premises in accordance with the RICS Code of Measuring Practice (Sixth Edition).

Floor	Sq ft	Sq m
Basement	1,744	162
Ground	2,185	203
Total	3,929	365



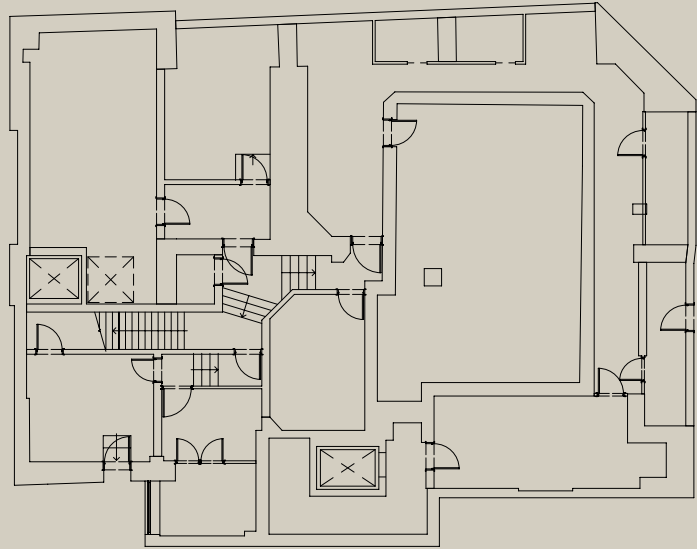
Ground Floor

2,185 sq ft / 203 sq m



Basement

1,744 sq ft / 162 sq m



Terms & Conditions



Further Info

Some further information including floor plans and design statements and quoting terms are available from the sole agent.

Toby Withall

e: toby.withall@knightfrank.com

t: 0131 222 9601

IMPORTANT NOTICE

(1) Particulars: These particulars are not an offer or contract, nor part of one. Any information about price or value contained in the particulars is provided purely as guidance, it does not constitute a formal valuation and should not be relied upon for any purpose. You should not rely on statements by Knight Frank in the particulars or by word of mouth or in writing ("information") as being factually accurate about the property, its condition or its value. Neither Knight Frank LLP nor any joint agent has any authority to make any representations about the property. No responsibility or liability is or will be accepted by Knight Frank LLP, seller(s) or lessor(s) in relation to the adequacy, accuracy, completeness or reasonableness of the information, notice or documents made available to any interested party or its advisers in connection with the proposed transaction. All and any such responsibility and liability is expressly disclaimed.

(2) Photos, Videos etc: The photographs, images, property videos and virtual viewings etc. show only certain parts of the property as they appeared at the time they were taken. Areas, measurements and distances given are approximate only.

(3) Regulations: Any reference to alterations to, or use of, any part of the property does not mean that any necessary planning, building regulations or other consent has been obtained. A buyer or lessee must find out by inspection or in other ways that these matters have been properly dealt with and that all information is correct.

(4) VAT: The VAT position relating to the property may change without notice.

(5) Financial Crime: In accordance with the Money Laundering, Terrorist Financing and Transfer of Funds

(Information on the Payer) Regulations 2017 and Proceeds of Crime Act 2002 Knight Frank LLP may be required to establish the identity and source of funds of all parties to property transactions.

(6) To find out how we process Personal Data, please refer to our Group Privacy Statement and other notices at <https://www.knightfrank.com/legals/privacy-statement>.

Particulars dated June 2020 Photographs and videos dated June 2020

Knight Frank is the trading name of Knight Frank LLP. Knight Frank LLP is a limited liability partnership registered in England and Wales with registered number OC305934. Our registered office is at 55 Baker Street, London W1U 8AN where you may look at a list of members' names. If we use the term 'partner' when referring to one of our representatives, that person will either be a member, employee, worker or consultant of Knight Frank LLP and not a partner in a partnership.

Designed by TR