



TO LET Grade A Offices

SUITES AVAILABLE

3,000 - 15,449 SQ FT

278.7 - 1,435.3 SQ M

GLOBAL REACH

Located for Business.
Designed for Success.

Celtic Gateway Business Park
Cardiff CF11 0SN



Description

Global Reach forms part of the popular Celtic Gateway Business Park, which is already home to a number of high profile business occupiers, including Active Quote, Nuffield Health, Source Insurance and Lexis Nexis Risk Solutions.

This headquarters style office building has been designed to provide high quality office accommodation over four open plan floors, with each wing having its own separate entrance, housing passenger lift, stairs and WCs.

The building benefits from secure surface car parking for more than 200 vehicles. The upper floors benefit from impressive views over Cardiff Bay and the new Cardiff International Sports Village development.

GLOBAL REACH
is a Grade A office
building located on the
Celtic Gateway Business
Park in Cardiff Bay

Located for Business.
Designed for Success.



Office Specification

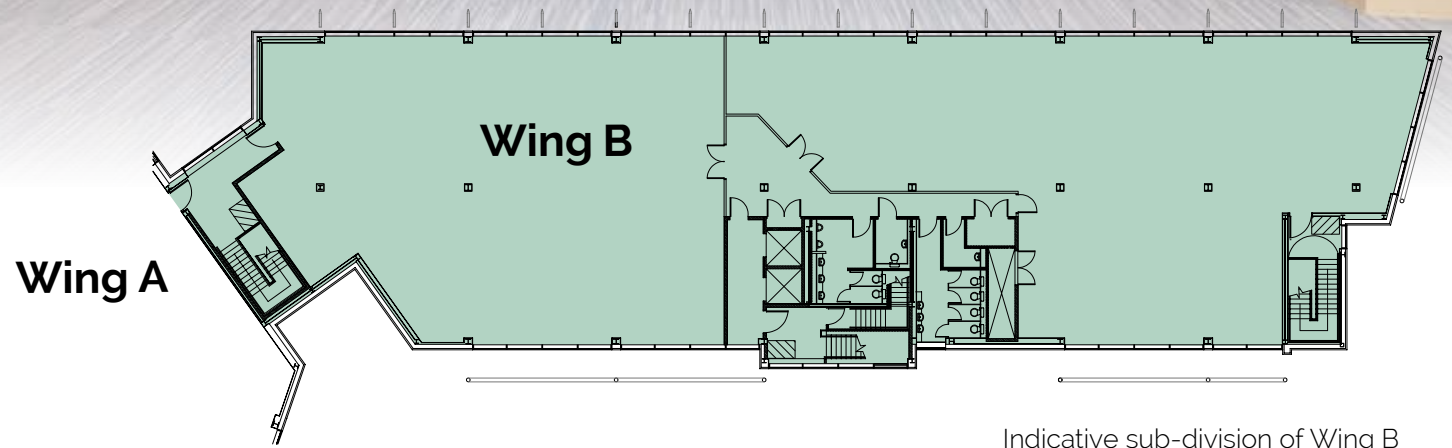
- VRF Comfort Cooling System
- Suspended ceilings
- Recessed lighting
- Fully accessible raised floors
- Floor box ratio of 1:10 sq m
- Fully carpeted
- Two 8 person passenger lifts
- Kitchen facilities
- Male/Female and Disabled WCs
- Disabled access

Sustainability & Energy Performance

Global Reach has been designed to achieve a BREEAM Very Good rating.

The building has been assessed with EPC Rating of B43.





Indicative sub-division of Wing B

	Size (sq ft)	Size (sq m)
3rd Floor (Wing B)	7,969	740.3
Ground Floor (Wing B)	7,480	695.0

The areas to the above are approximate only and are subject to confirmation in accordance with IPMS3 - Office.

Terms and Availability

The remaining offices are available on new effective full repairing and insuring leases with a building service charge. Floors can be subdivided to accommodate requirements from circa 3,000 sq ft (278.7 sq m).

The car parking ratio at Global Reach is 1:308 sq ft. Please contact the joint agents for details of current availability including rent, rates, service charge and parking allocation.

Location

Global Reach is less than 3 miles south west of Cardiff city centre, with direct access onto the A4232, which is the main carriageway linking the city centre with Cardiff Bay and the M4 motorway.

Cardiff Bay has witnessed much activity in recent years and is now firmly established as a popular business, residential and leisure location. There is a range of high profile companies, retailers, hotels, restaurants and bars, the majority of which are situated in the thriving Mermaid Quay development.

Cardiff Bay Retail Park is within a short walk, providing a host of high street retailers including; Morrisons, IKEA, Asda, Boots and Starbucks. The Cardiff International Sports Village is immediately opposite the building and home to Cardiff International Pool, White Water and Indoor Surfing Centre and the new Ice Arena Wales.

There are regular bus services linking the Cardiff Bay Retail Park and the International Sports Village with Mermaid Quay and the city centre.



Located
for Business.
**Designed
for Success.**

- 1** Cardiff City Centre
- 2** Asda
- 3** Harvester
- 4** BT
- 5** Morrisons

- 6** Ice Arena Wales
- 7** Cardiff International Pool
- 8** Cardiff International White Water
- 9** Cardiff Pointe

- 10** Millennium Centre
- 11** Welsh Assembly
- 12** St David's Hotel & Spa
- 13** BBC Studios



Viewing and further information:

Strictly by appointment with joint agents:

Mark Sutton

mark.sutton@knightfrank.com
07919 395 593

Tom Eddolls

tom.eddolls@knightfrank.com
07976 730 173

Chris Terry

chris.terry@avisonyoung.com
07793 269 442

IMPORTANT NOTICE (1) Particulars: These particulars are not an offer, an invitation or a contract, nor part of one. Any information about price or value contained in the particulars is provided purely as guidance, it does not constitute a formal valuation and should not be relied upon for any purpose. You should not rely on statements by Knight Frank or Avison Young in the particulars or by word of mouth or in writing ("information") as being factually accurate about the property, its condition or its value. Knight Frank and Avison Young has no authority to make any representations about the property. No responsibility or liability is or will be accepted by Knight Frank LLP, Avison Young, seller(s) or lessor(s) in relation to the adequacy, accuracy, completeness or reasonableness of the information, notice or document supplied or otherwise made available to any interested party or its advisers in connection with the Proposed Transaction. All and any such responsibility and liability is expressly disclaimed. (2) Images: Photographs show only certain parts of the property as they appeared at the time they were taken. Areas, measurements and distances given are approximate only. (3) Regulations: Any reference to alterations to, or use of, any part of the property does not mean that any necessary planning, building regulations or other consent has been obtained. A buyer or lessee must find out by inspection or in other ways that these matters have been properly dealt with and that all information is correct. (4) VAT: The VAT position relating to the property may change without notice. (5) Financial Crime: In accordance with the Money Laundering, Terrorist Financing and Transfer of Funds (Information on the Payer) Regulations 2017 and Proceeds of Crime Act 2002 Knight Frank LLP may be required to establish the identity and source of funds of all parties to property transactions. Knight Frank is the trading name of Knight Frank LLP. Knight Frank LLP is a member of an international network of independent firms which may use the "Knight Frank" name and/or logos as part of their business name and operate in jurisdictions outside the United Kingdom. No "Knight Frank" entity acts as agent for, or has any authority to represent, bind or obligate in any way, any other "Knight Frank" entity. Knight Frank LLP is a limited liability partnership registered in England with registered number OC305934. Knight Frank LLP registered office is 55 Baker Street, London, W1U 8AN, where you may look at a list of members' names (this can also be found at <http://www.knightfrank.co.uk/about-us>). FEBRUARY 2024

