

55  
DRURY  
LANE

— COVENT GARDEN WC2 —

12,487 sq ft high quality, contemporary office space in Covent Garden

55 DRURY LANE

# REMODELLED FOR BUSINESS

55 Drury Lane has been redesigned by Barr Gazetas to accommodate modern professionals. From the smart exterior to the refined reception and new end-of-trip facilities, every detail has been considered. The building will offer 12,487 sq ft high-quality contemporary CAT A office space over two floors.



Reception CGI for indicative purposes



Exterior CGI for indicative purposes

## AVAILABILITY

FLOOR	SQ FT (NIA)	SQ M (NIA)
2ND	6,131*	569.6*
1ST	6,356	590.5
TOTAL	12,487	1160.1

\*2nd floor excludes 200 sq ft internal balcony





Office floor CGI for indicative purposes

# HIGHLIGHTS



---

New CAT A floors



---

Contemporary  
remodelled reception  
designed by Barr Gazetas



---

Access to an internal  
balcony on 2nd floor



---

Refurbished WC's



---

New cycle store and  
end-of-trip facilities



---

Excellent floor to ceiling  
heights



---

Great location in the  
heart of Covent Garden



---

EPC x

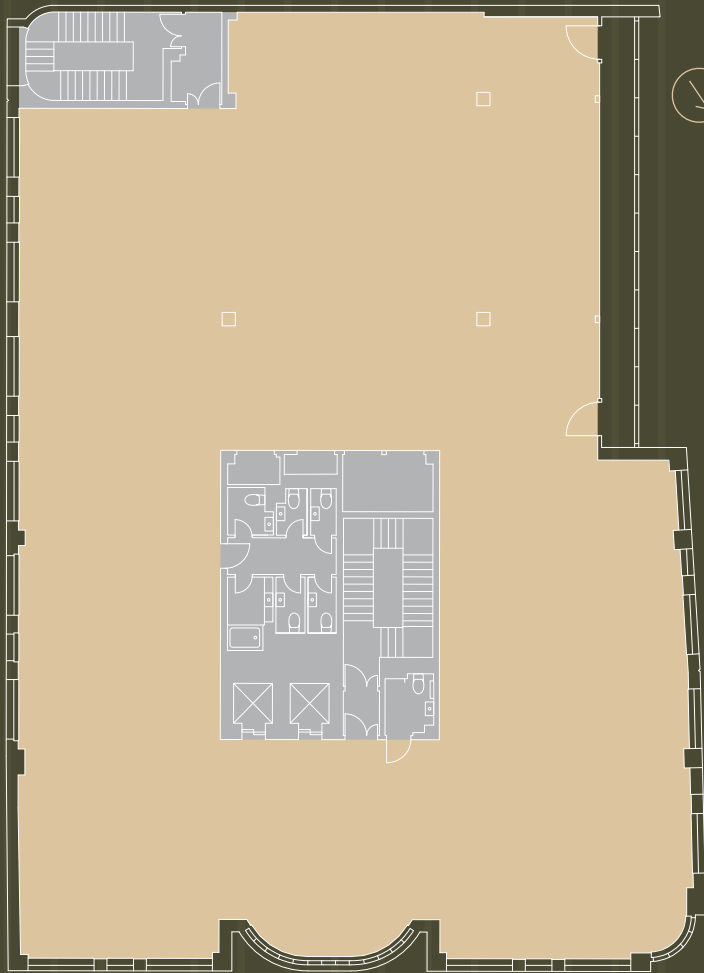




Internal balcony CGI for indicative purposes

# 1ST FLOOR

6,356 sq ft | 590.5 sq m

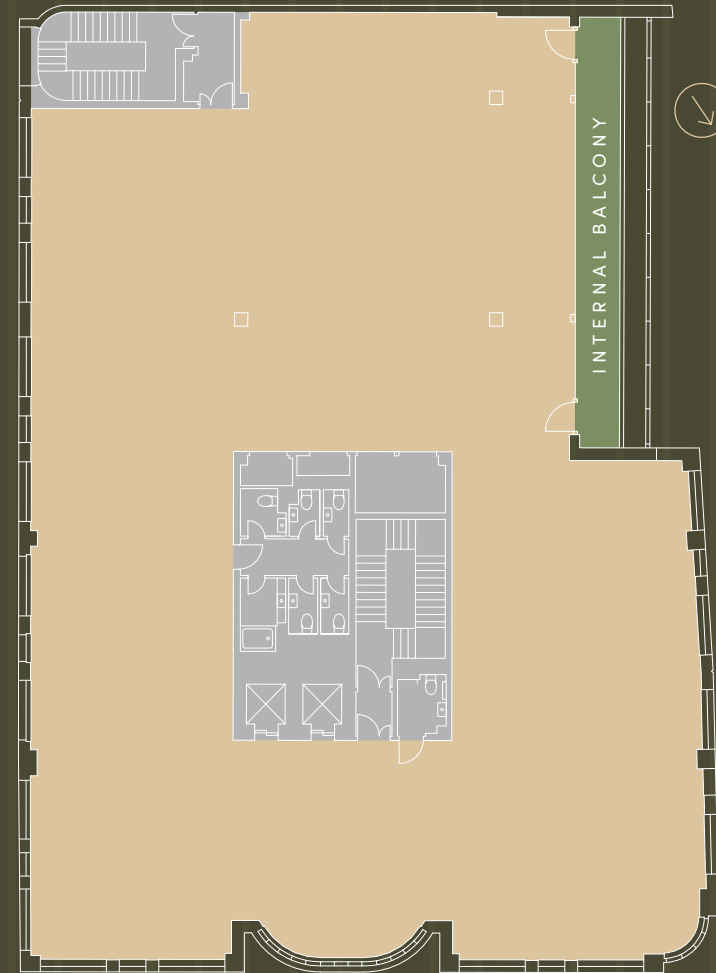


MARTLETT COURT

DRURY LANE

# 2ND FLOOR

6,131 sq ft | 569.6 sq m  
(excluding 200 sq ft internal balcony)



MARTLETT COURT

DRURY LANE



# SPOILT FOR CHOICE

From culture to coffee shops, fine dining to fashion, the location has it all. Covent Garden is renowned for restaurants, bars, retail and theatre whilst numerous green spaces are near by. The area is also well linked with many transport connections moments away, this includes Elizabeth Line, National Rail, underground and even Thames boat travel.



Seven Dials



Somerset House



Seven Dials Market



Lincoln's Inn Fields





# TOTTENHAM COURT ROAD

10 min walk



- YMCA Club
- The Bloomsbury
- Arcade Food Hall
- Flat Iron
- L'Escargot
- Soho House 40

# LEICESTER SQUARE

8 min walk



- LSQ Rooftop
- The National Gallery
- Gymbox
- St Martin's Lane Hotel

- Radisson Blu
- Thistle

- The Hoxton
- Flight Club
- London Cocktail Club
- Shaftesbury Theatre
- Oasis Sports Centre
- Gillian Lynne Theatre
- Margot

- Seven Dials Market
- Flesh & Buns
- Hawksmoor
- Fabrique Bakery
- Tatty Devine
- The Ivy
- Dishoom
- Agnes B
- Paul Smith
- Nomad London
- Royal Opera House
- Fortune Theatre
- FishWorks
- Balthazar
- SUSHISAMBA
- Laduree
- San Carlo Cicchetti
- Christopher's
- Clos Maggiore
- Grind
- Sticks'n'Sushi
- The Ivy

# COVENT GARDEN

4 min walk



- The 10 Cases
- Barrafina
- Nomad London
- Royal Opera House
- Fortune Theatre
- FishWorks
- Balthazar
- SUSHISAMBA
- Laduree
- San Carlo Cicchetti
- Christopher's
- Clos Maggiore
- Grind
- Sticks'n'Sushi
- The Ivy
- Ave Mario
- The Savoy

# 55 DRURY LANE

# HOLBORN

6 min walk



- Bull At The Gate
- Rosewood
- Club Quarters Hotel
- Middle Eight
- Coopers
- Peacock Theatre
- The Lincoln Suites
- The Delaunay
- ROKA

# LINCOLN'S INN FIELDS

# TEMPLE

9 min walk



- The Seven Stars
- The George
- Roasting Plant Coffee
- 180 House
- Somerset House
- The Savoy

RIVER THAMES



# 55 DRURY LANE

— COVENT GARDEN WC2 —



---

**Francesca Skinner**  
francesca.skinner@knightfrank.com  
07866 191140

---

**Nick Codling**  
nick.codling@knightfrank.com  
07917 593469

Important Notice: Knight Frank for itself and for the vendors or lessors of this property for whom they act, give notice that the sole purpose of these particulars is to provide outline information on this property to prospective purchasers or tenants (as applicable), who are solely responsible for making their own investigations and seeking independent advice, including the costs of doing so, and forming their own view as to the condition of the property, its fitness for their requirements and the accuracy and completeness of the statement herein. These particulars do not constitute any recommendation or offer to enter into any contract regarding this property. Knight Frank do not guarantee the accuracy or the completeness of any descriptions, dimensions, references to condition, necessary permissions for use and occupation and other details contained herein, and prospective purchasers or tenants must not rely on them as statements of the fact or representations. Rents quoted in these particulars may be subject to VAT in addition. Knight Frank nor the vendors or lessors of this property accept any liability or responsibility (whether in negligence or otherwise) for any loss arising from using or relying on these particulars. Any reference herein to any plant, machinery, equipment, services, fixtures or fittings at the property shall not constitute a representation (unless otherwise expressly stated) as to its state or condition or that it is capable of fulfilling its intended function. Knight Frank nor any of its partners, employees or agents have any authority to make, and do not make, any representation or warranty, or to enter into any contract, in relation to the property. January 2024.