

WORK, WITH A DIFFERENCE

15 WATER ST.

Wood Wharf, E14

WHARF
UTE CITY

Over 300 shops,
restaurants, bars,
and more of the city's
signature buildings
will be here.

and all this
within a 15
minute walk.



Reception

The complete mixed-use environment in a single building.

A boutique hotel, stylish workplace, health club and vibrant ground floor restaurant and bar.

We've got 45,000 sq ft available across 4 floors for your employees to focus, collaborate, socialise and huddle. Whatever they need to get done at the office.

OPTIONS OPTIONS OPTIONS

TRIBE

**THIRD
SPACE**

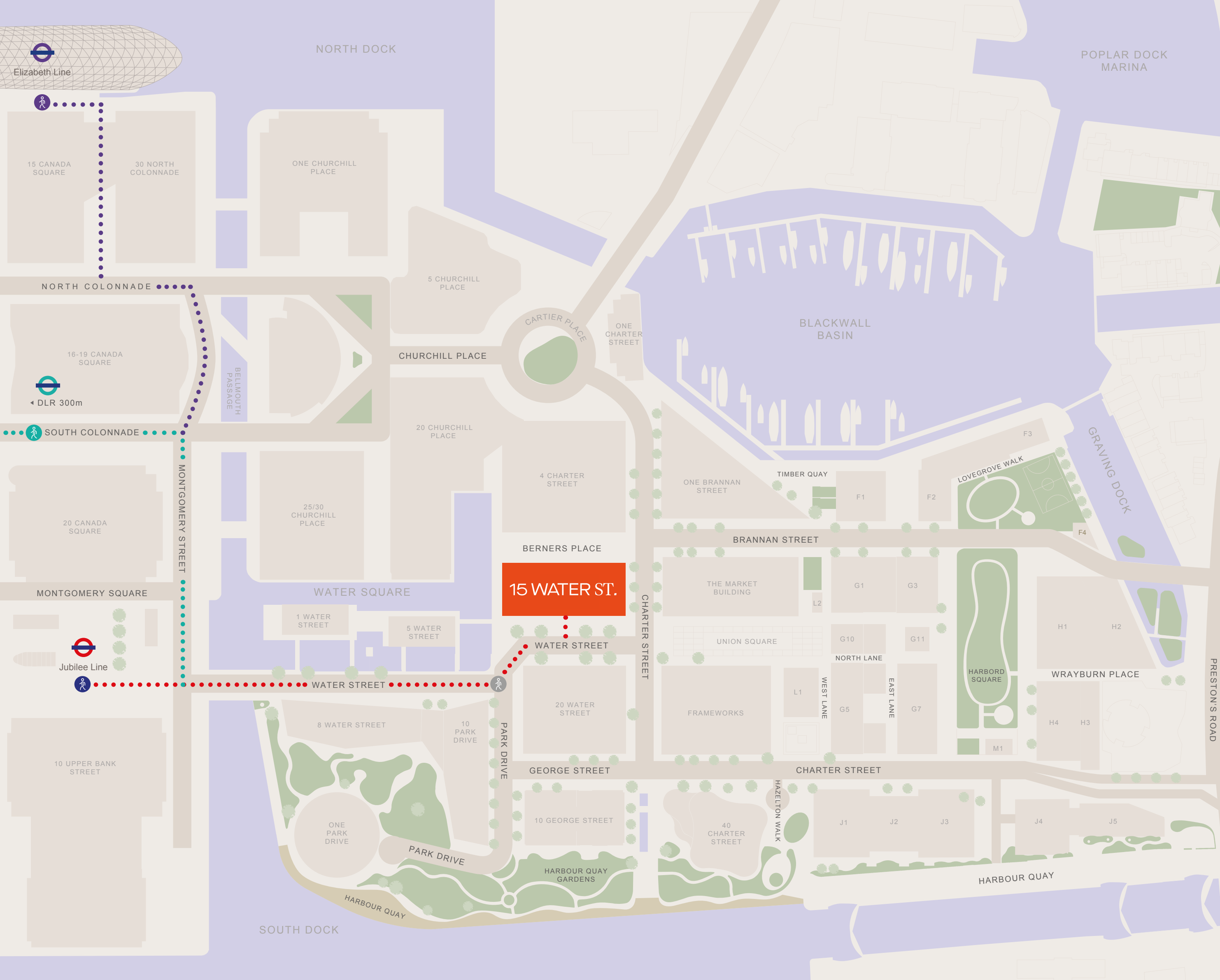
**FEELS LIKE
JUNE**



View of Water Street Pavilions from Montgomery Street

FIND YOUR FLOW

Located by Canary Wharf, Wood Wharf is the perfect setting for tomorrow's ambitious urban dweller. Thoughtfully designed offices in a restful waterside haven, plenty of places to socialise and spaces allowing you to *breeeeeaathe*.



UNDER

2 mins walk to Jubilee line.

OVER

DLR just 6 mins walk.

ACROSS

5 mins walk to Elizabeth line.

And access to 8 London mainline stations within 10-30 mins.

Up.

Access 3 international airports within 10 - 40 mins.

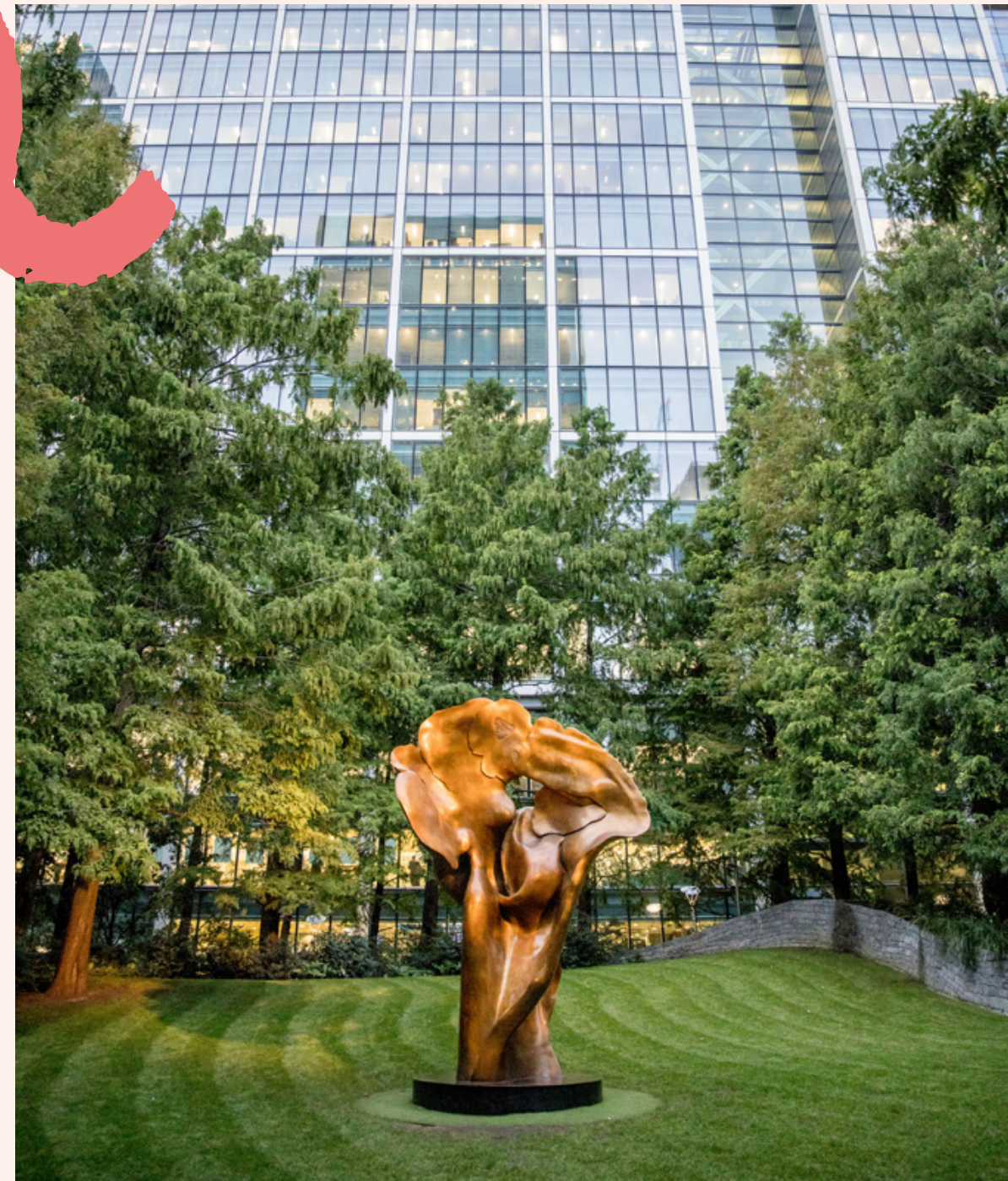
HEATHROW, GATWICK AND CITY AIRPORT.

15 WATER ST.



9 acres of interconnected public space & gardens

5 million sq ft of mixed-use development



WELCOME TO THE NEIGHBOURHOOD



350,000 sq ft of retail and leisure



TRIBE

amazon fresh

DISHOOM



Patty&Bun

HAWKSMOOR



Check in to your space then drift over to TRIBE for a coffee.

15 WATER ST.



'Feels Like June' restaurant in 15 Water Street



View facing reception from TRIBE lobby

At a glance...

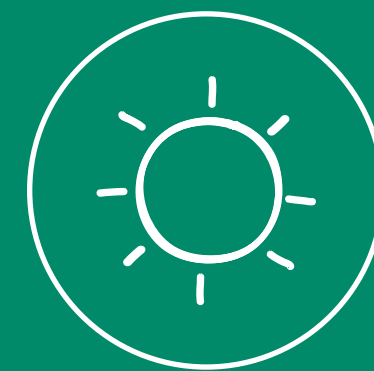
LEVEL	AREA ^{SQ FT}	AREA ^{SQ M}	TERRACE ^{SQ FT}
13	9,304	864	2,799
12	12,535	1,165	
11	12,529	1,164	
10	12,540	1,165	
B (storage)	646	60	
Total (NIA)	47,554	4,418	2,799



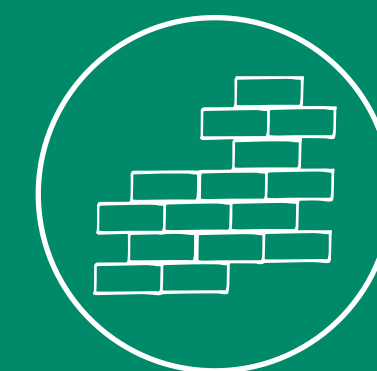
High end gym and hotel within building



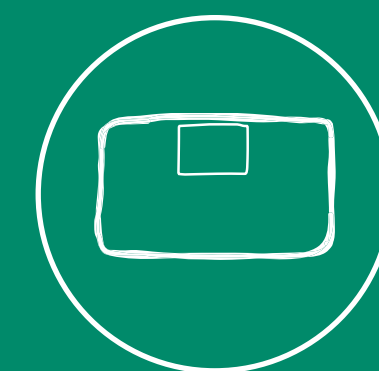
Private roof terrace (13th floor)



Openable windows on all floors



Unique brick facade



Side core



CAT A office space



Occupational densities 1:8



Exposed ceilings



Raised access floors



EPC A Rating



4X Passenger lifts



2x Goods lifts



BREEAM Outstanding



106 Bike racks
8 Showers



LEVEL 12

Indicative fitted CGI with tenant fitted staircase









LEVEL 13
Indicative fitted CGI



ICONIC VIEWS

Level 13 has a landscaped roof terrace. A place to decompress and enjoy the views of Canary Wharf and across the water.







Canary Wharf & Wood Wharf

DOING GOOD BUSINESS

34%

Reduction in overall emissions since 2012

3,576,293

Pieces of single-use plastic removed or recycled

1,711

Local people attended community insight events at our sites and offices

100%

Electricity purchased from renewable resources since 2012

£2.9 million

in donations and in-kind support

Zero waste to landfill from managed areas since 2009

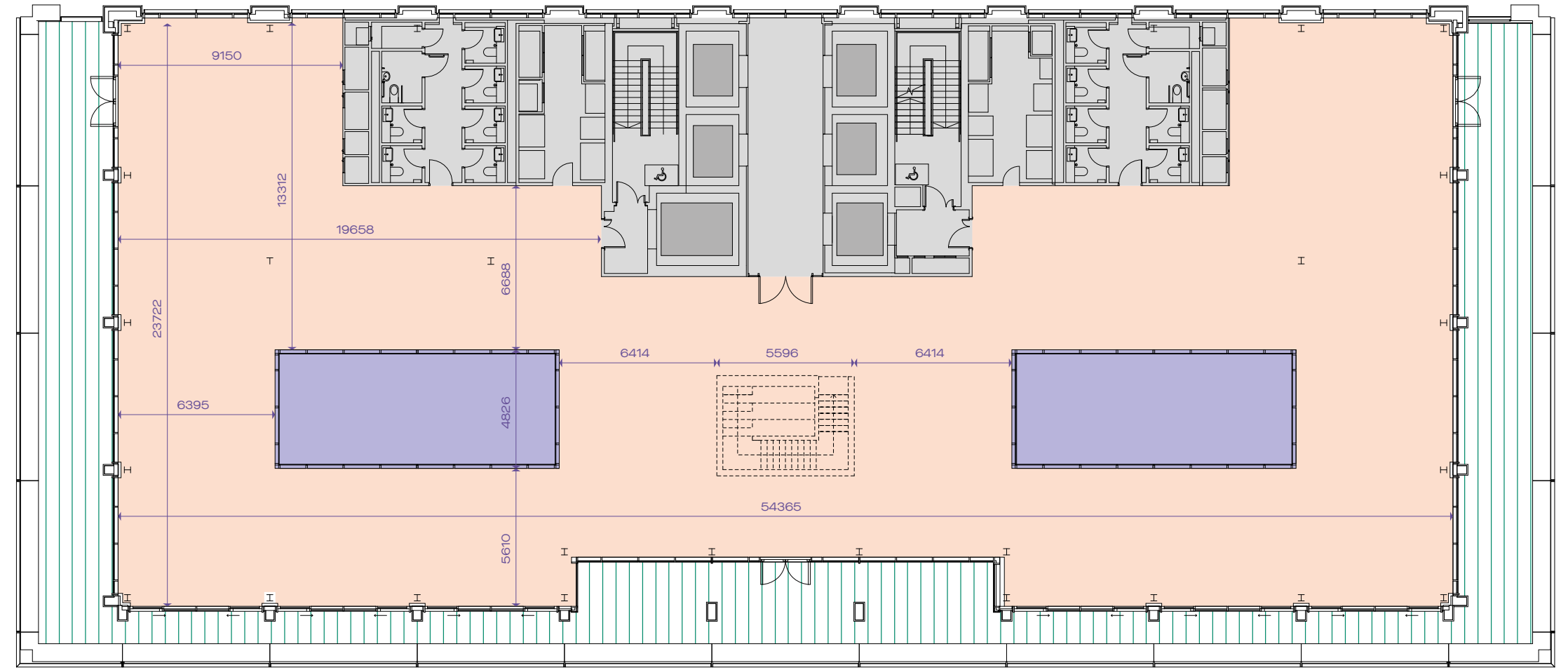
The world's 1st commercial district to be awarded community status

PLASTIC FREE

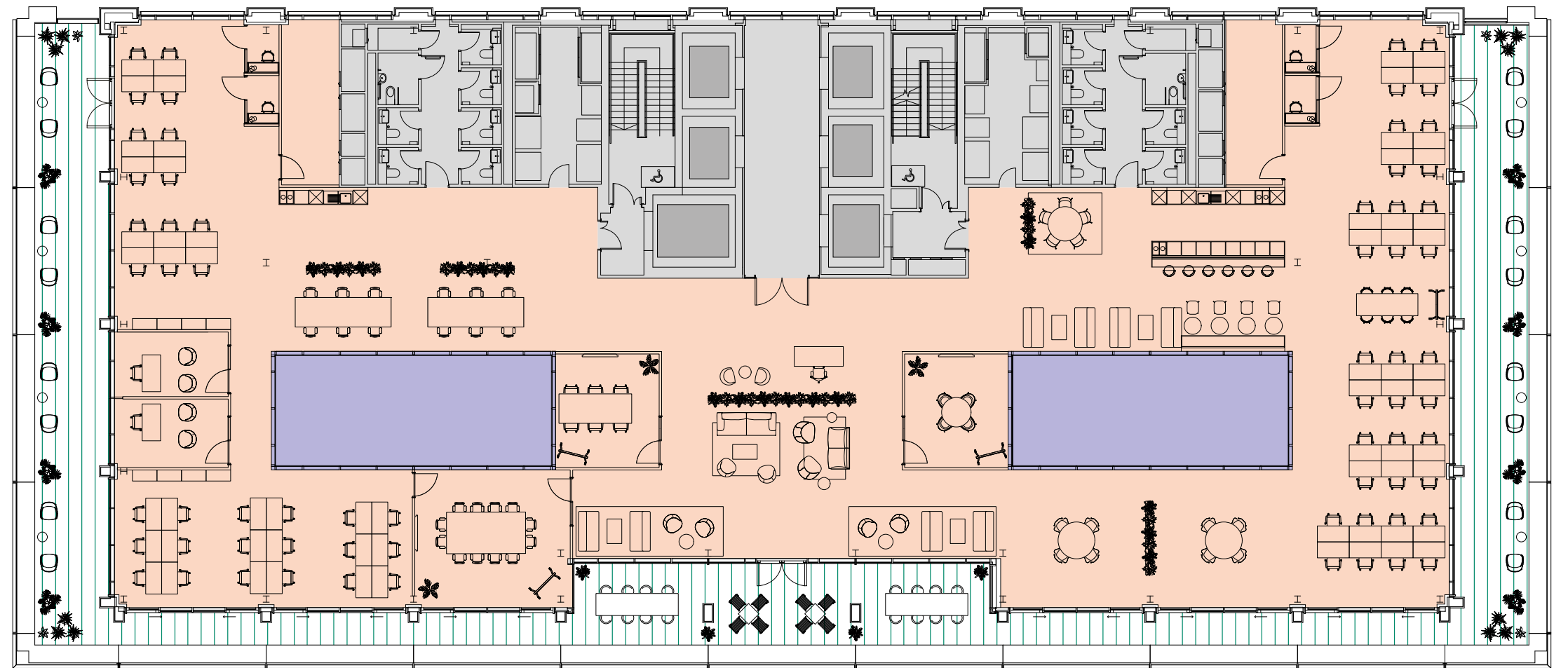
from environmental charity Surfers Against Sewage

Level 13

FLOOR — 9,304 SQ FT 864 SQ M
 TERRACE — 2,799 SQ FT 260 SQ M



Fitted Space plan



Example layout

■ Floor
 ■ Atrium
 ▨ Terrace

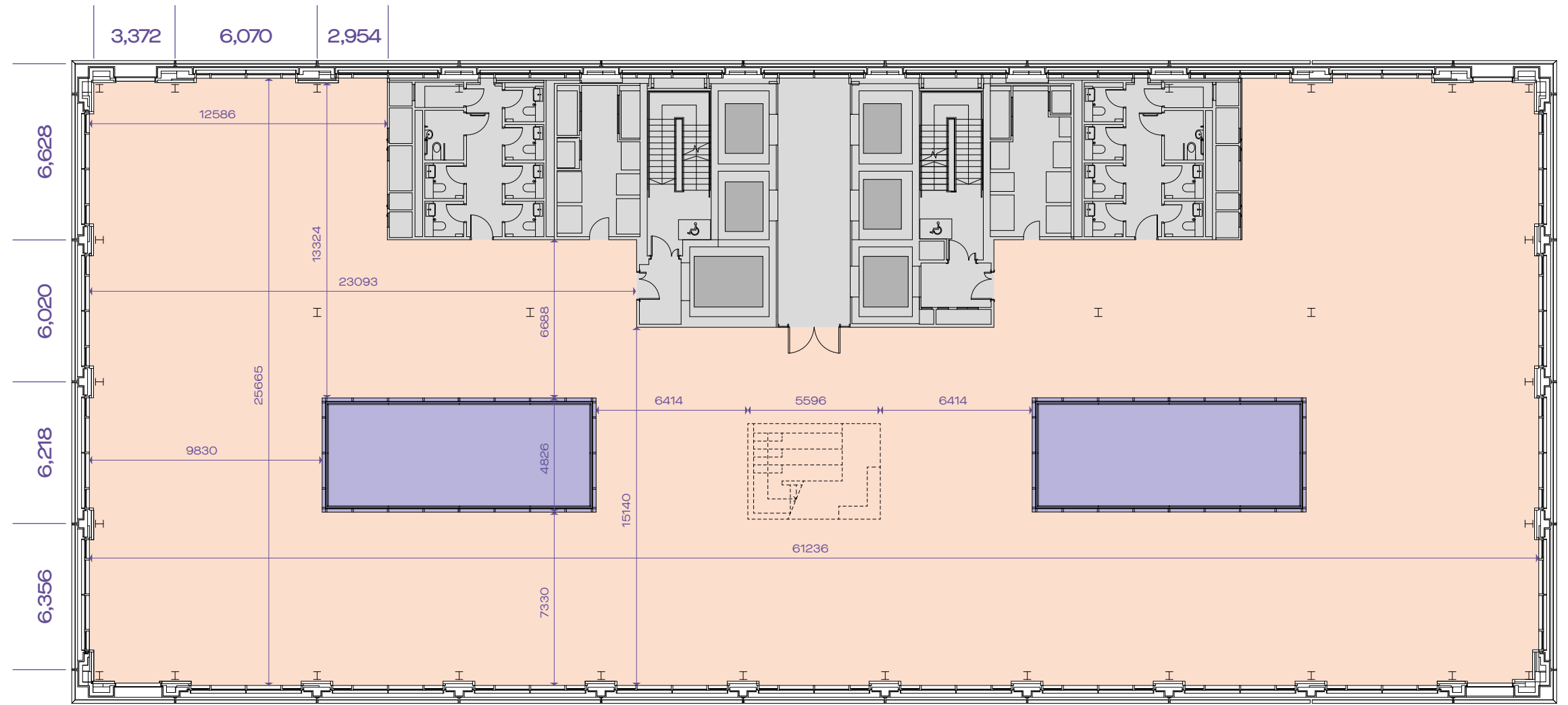
- 66 fixed desks
- 3 meeting rooms (4, 6, 10-12 pax)
- 4 phone booths
- 2 executive offices
- 6 collaboration areas

- Reception
- Kitchen/breakout area
- Teapoint
- Touchdown/lounge



Typical floor Level 12

12,535 SQ FT 1,165 SQ M



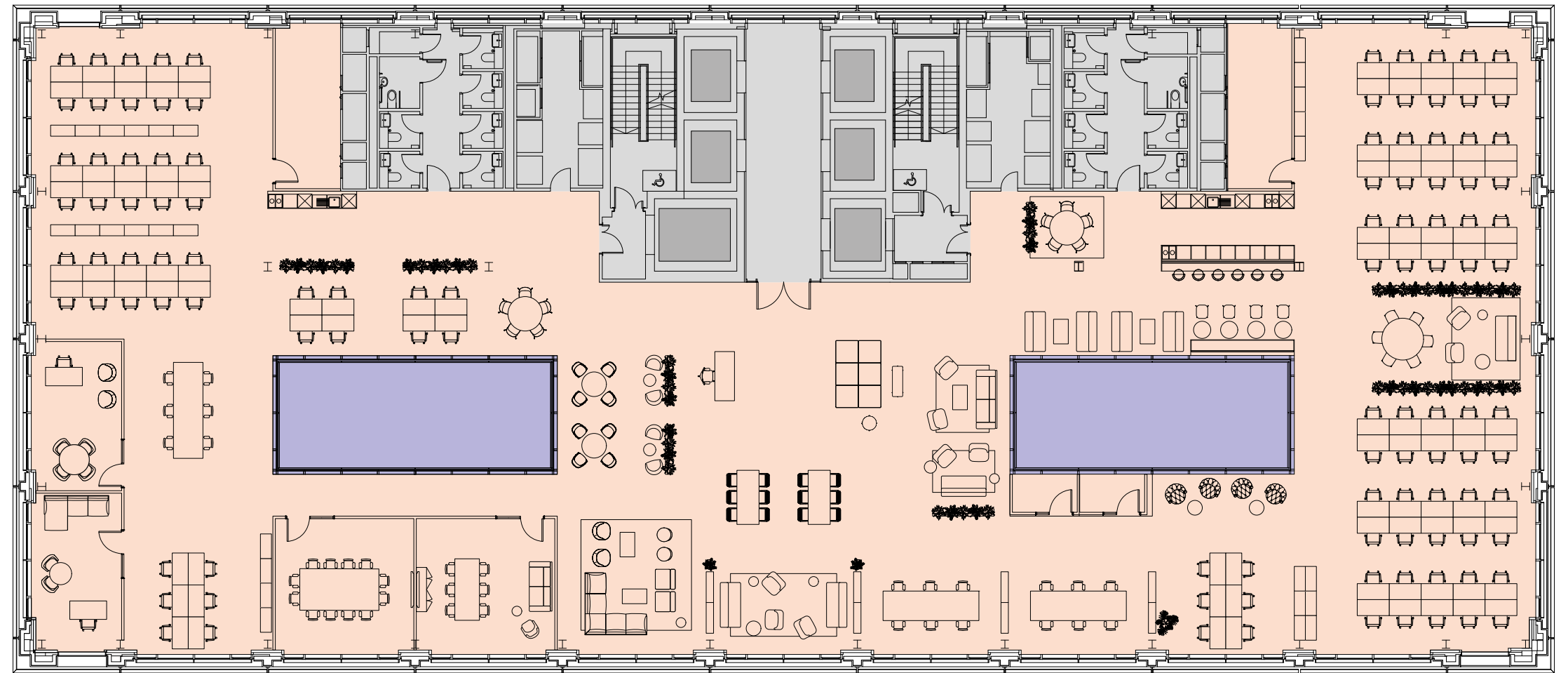
15 WATER ST.

Fitted Space plan

Example layout

Floor
 Atrium

- 112 fixed desks
- Reception
- 6 collaboration areas
- 2 exec offices
- 2 meeting rooms (6, 10-12 pax)
- 2 phone booths
- Touchdown/lounge
- Kitchen/breakout area
- Teapoint





YOUR TEAM

WORK, WITH A DIFFERENCE

Tom Harvey

T: +44 20 3967 7188
M: +44 7790 344 111

tom.harvey@knightfrank.com

Abby Brown

T: +44 20 7861 1306
M: +44 7827 083969

abby.brown@knightfrank.com

Important Notice: Particulars: These particulars are not an offer or contract, nor part of one. You should not rely on statements by Knight Frank LLP in the particulars or by word of mouth or in writing ("information") as being factually accurate about the property, its condition or its value. Neither Knight Frank LLP nor any joint agent has any authority to make any representations about the property, and accordingly any information given is entirely without responsibility on the part of the agents, seller(s) or lessor(s). 2. Photos etc: The photographs show only certain parts of the property as they appeared at the time they were taken. Areas, measurements and distances given are approximate only. 3. Regulations etc: Any reference to alterations to, or use of, any part of the property does not mean that any necessary planning, building regulations or other consent has been obtained. A buyer or lessee must find out by inspection or in other ways that these matters have been properly dealt with and that all information is correct. 4. VAT: The VAT position relating to the property may change without notice. Knight Frank LLP is a limited liability partnership registered in England with registered number OC305934. Our registered office is 55 Baker Street, London W1U 8AN, where you may look at a list of members' names. November 2021. Document lovingly produced by Esso. esso.agency

15 WATER ST.