



Clerkenwell

Northburgh House

10 Northburgh Street
EC1

A space for creativity.

Northburgh House is located at 10 Northburgh Street and offers up to 28,813 sq ft of newly refurbished warehouse-style office space ranging in condition from CAT A to fully fitted space.



Northburgh House - Clerkenwell



A unique space to make your own.

The building is full of character, with exposed services and high-quality, contemporary finishes, the space provides the perfect open-plan environment to promote creativity and collaborative working.

The available floors have recently undergone a full refurbishment. The 2nd floor has been delivered to provide the ultimate fitted and furnished office space.

Flexible and effective space.



Second Floor Welcome Area



Second Floor Kitchenette



Second Floor Open Plan



Second Floor Breakout Space




Second Floor Boardroom

Top-quality specification.


With fantastic natural light, the space boasts exposed brickwork, original timber flooring, cast iron columns, and a wealth of characterful features that are sure to inspire and impress.




Second Floor Meeting Booths



Newly refurbished high-quality office floors



Fibre ready via Backbone Connect



LED strip lighting



Fantastic natural daylight



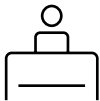
Air conditioning



Warehouse-style features throughout



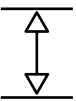
Shower facilities



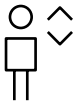
Manned Reception




Brand new fitted office space on 2nd Floor



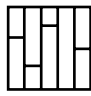
Generous floor to ceiling heights




2 x passenger lifts



Demised WCs



Original restored timber flooring



Secure bike storage





Second Floor Open Plan Workspace



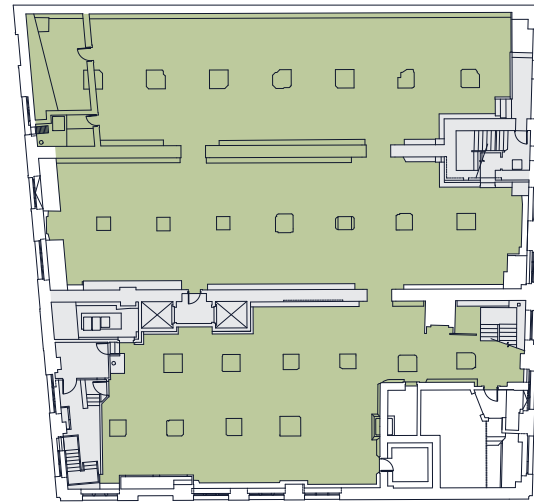
Carefully curated.

The second floor has been delivered as fully fitted, plug and play space. The lower ground to first floors are in CAT A condition.

Floor		Sq Ft	Sq M
Second		8,227	764
First		8,003	744
Ground Front	South	635	59
	North	4,815	447
Lower Ground		7,102	660
Total		28,813	2,677

Lower Ground Floor (Self Contained)

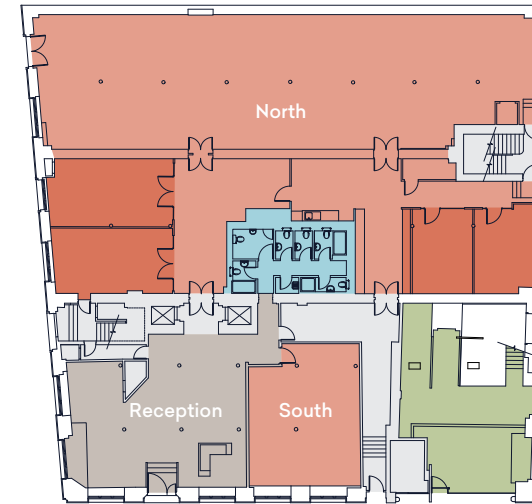
7,102 sq ft / 660 sq m



Northburgh Street

Ground Floor

5,450sq ft / 506 sq m

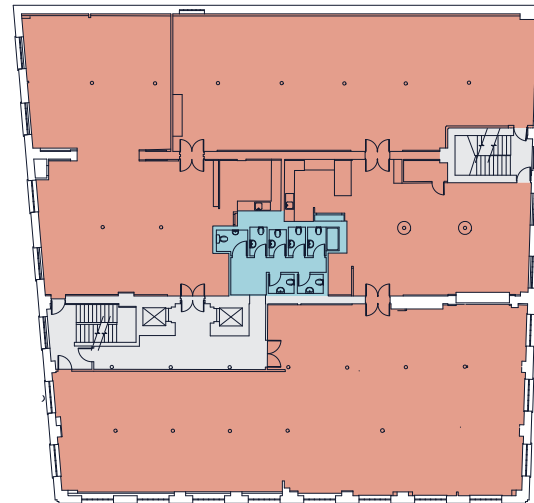


Northburgh Street

- Office ■
- Office (Fitted) ■
- Self Contained Office ■
- Core ■
- Reception ■
- Toilet Facilities ■

First Floor

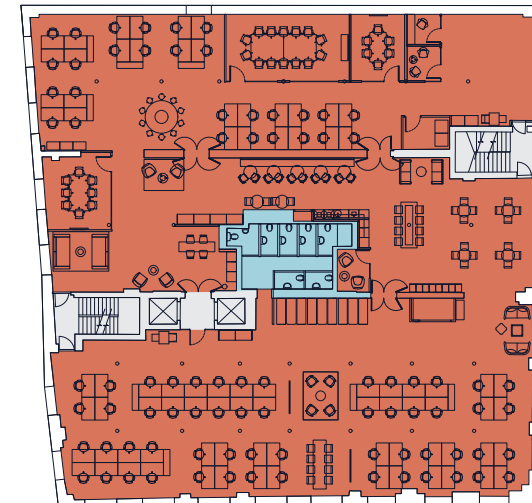
8,003 sq ft / 744 sq m



Northburgh Street

Second Floor (Fitted)

8,227 sq ft / 764 sq m



Northburgh Street

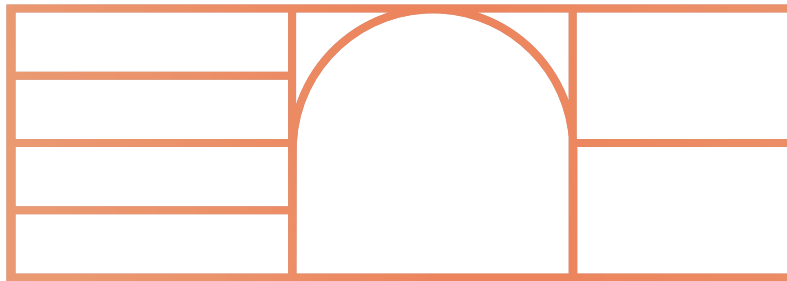
Workstations	84
Reception	01
14 person boardroom	01
8 person meeting room	01
6 person meeting room	01
Teapoint	01
Breakout areas	02
Soft seating areas	03
Meeting booths	03
Collaboration areas	02
Call rooms	03



Space to
make your own.



Northburgh House - Clerkenwell



CAT A Office



Compton

The creative buzz of Clerkenwell.

Step out of the building into a vibrant social scene, with a celebrated mix of bars, restaurants, unique shops and quiet green spaces, perfect for whatever your mood.

Transport is well covered. Farringdon is on the Circle, District and Hammersmith & City Lines, and also serves mainline trains and the new Elizabeth Line. The Cycle Superhighway is also just around the corner as well as Barbican and Old Street Tube Station.

Bars & Restaurants

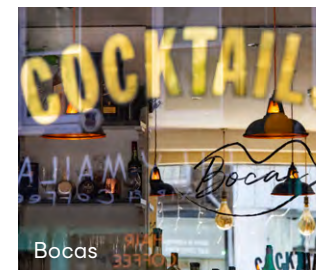
1. Luca
2. The Green
3. St John
4. Breddos Tacos
5. Clerkenwell & Social
6. Grainger & Co
7. BrewDog
8. The Slaughtered Lamb

Cafés

1. Goswell Road Coffee
2. Jimmy and the Bee
3. Giddy Up Coffee
4. Fix Coffee
5. EC1 Coffee House
6. Black Sheep Coffee
7. Pret A Manger
8. Powerhouse Coffee



Luca



Bocas



Apulia



St Johns Courtyard

Walking times.

6 mins	 Barbican
-----------	-------------------------

7 mins	 Farringdon
-----------	---------------------------

10 mins	 Old Street
------------	---------------------------

Walk times from the building. Source: TfL.

Come and join the Clerkenwell community.

For further information, please contact the joint sole letting agents.



Josh Perlmutter

jp@compton.london
07814 699 096

Emma Higgins

eh@compton.london
07769 605 295

Oliver Jay

oj@compton.london
07903 714 187

Michael Raibin

mr@compton.london
07880 795 679



Katie White

katie.white@knightfrank.com
07974 096 734

Lucy Dowling

lucy.dowling@knightfrank.com
07557 310 233

Mike Voller

mike.voller@knightfrank.com
07739 763 699

Elizabeth Friend

elizabeth.friend@knightfrank.com
07976 668 448

northburghouse.com

Compton and Knight Frank give notice that these particulars are set out as a general outline only for the guidance of intending Purchasers or Lessees and do not constitute any part of an offer or contract. Details are given without any responsibility and any intending Purchasers, Lessees or Third Party should not rely on them as statements or representations of fact, but must satisfy themselves by inspection or otherwise as to the correctness of each of them. No person in the employment of Compton or Knight Frank has any authority to make any representation or warranty whatsoever in relation to this property. August 2023.

Designed & produced by Cre8te - 020 3468 5760 - cre8te.london