

Whitakers

Estate Agents



37 South Lane, Hessle, HU13 0RR

£170,000

A unique opportunity has arisen to acquire this 2 bedroom ground floor apartment in the heart of Hessle, well placed to access the Square and the Weir with all the amenities it has to offer and boasts great transport links with a regular bus service and railway station.

The main features of this ground floor apartment are - entrance, large front lounge with French doors that open out to the garden, fitted breakfast kitchen, large conservatory, two double bedrooms (master fitted) together with the family bathroom suite.

Externally there are well kept gardens to three sides, mainly laid to lawn with mature plants / shrubs and trees, a pond.

This property would benefit from some minor cosmetic enhancement, however once modernised you will have a truly unique ground floor apartment in the heart of Hessle.

Early viewings are advised.

The Accommodation Comprises

Entrance Hall

Private double glazed front door, central heating radiator and carpeted flooring. Leading to:

Conservatory 14'1" x 17'0" (4.30 x 5.20)



UPVC double glazed throughout with French doors to the garden and wooden doors to the lounge, three central heating radiators and carpeted flooring.

Lounge 16'11" x 20'0" (5.18 x 6.10)



Wooden glazed French doors to the garden, two central heating radiators, open fire with decorative surround and carpeted flooring.

Kitchen 10'0" x 12'5" (3.06 x 3.81)



UPVC double glazed door, UPVC double glazed window, central heating radiator, tiled flooring and fitted with a range of white floor and eye level units, worktop and breakfast bar with splashback tiles above, sink with mixer tap and integrated oven with extractor hood above.

Inner Hallway

Central heating radiator and carpeted flooring. Leading to:

Bedroom One 18'8" x 15'11" (5.70 x 4.87)



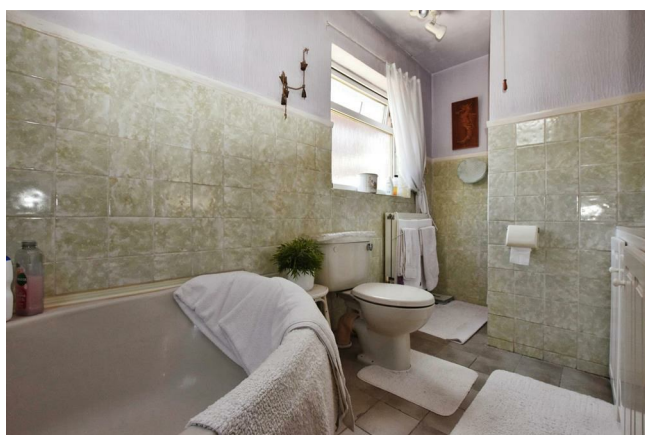
UPVC double glazed bay window, central heating radiator, fitted wardrobes / cupboards and carpeted flooring.

Bedroom Two 8'3" x 11'7" (2.53 x 3.55)



UPVC double glazed window, central heating radiator, built-in cupboard and carpeted flooring.

Bathroom



UPVC double glazed window, central heating radiator, partly tiled with tiled flooring and furnished with a four-piece suite comprising panelled corner bath, walk-in enclosure with mixer shower, his and hers vanity sink with mixer tap and low flush W.C.

External



Externally there are well kept gardens to three sides, mainly laid to lawn with mature plants / shrubs and trees, a pond.

Tenure

The property is held under Freehold tenureship

Council Tax Band

Local Authority - East Riding Of Yorkshire

Local authority reference number - HES325037000

Council Tax band - B

EPC Rating

EPC rating - D

Material Information

Construction - Standard

Conservation Area - Hessle Southfield

Flood Risk - No risk

Mobile Coverage / Signal - EE / Vodafone / Three / O2

Broadband - Basic 21 Mbps / Ultrafast 1000 Mbps

Coastal Erosion - No

Coalfield or Mining Area - No

Additional Services

Whitaker Estate Agents offer additional services via third parties: surveying, financial services, investment insurance, conveyancing and other services associated with the sale and purchase of your property.

We are legally obliged to advise a vendor of any additional services a buyer has applied to use in connection with their purchase. We will do so in our memorandum of sale when the sale is instructed to both parties solicitors, the vendor and the buyer.

Agents Notes

Services, fittings & equipment referred to in these sale particulars have not been tested (unless otherwise stated) and no warranty can be given as to their condition. Please note that all measurements are approximate and for general guidance purposes only.

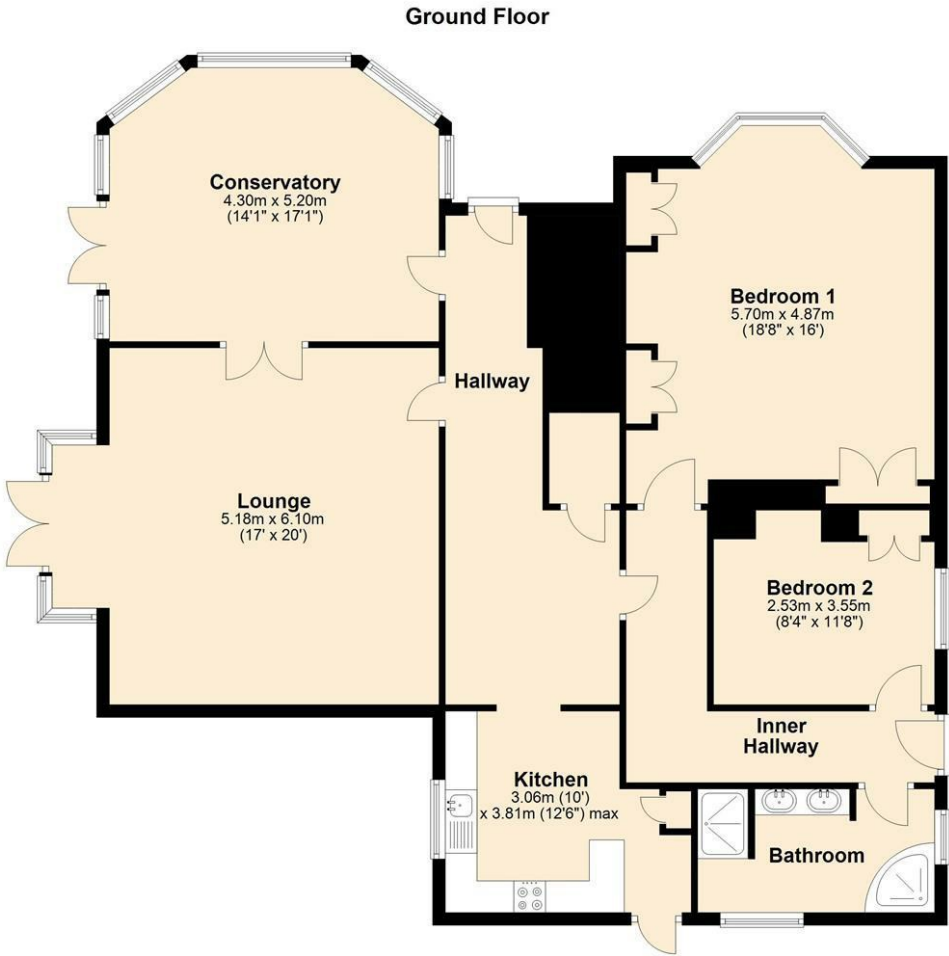
Free Market Appraisals / Valuations

We offer a free sales valuation service, as an Independent company we have a strong interest in making sure you achieve a quick sale. If you need advice on any aspect of buying or selling please do not hesitate to ask.

Whitakers Estate Agent Declaration

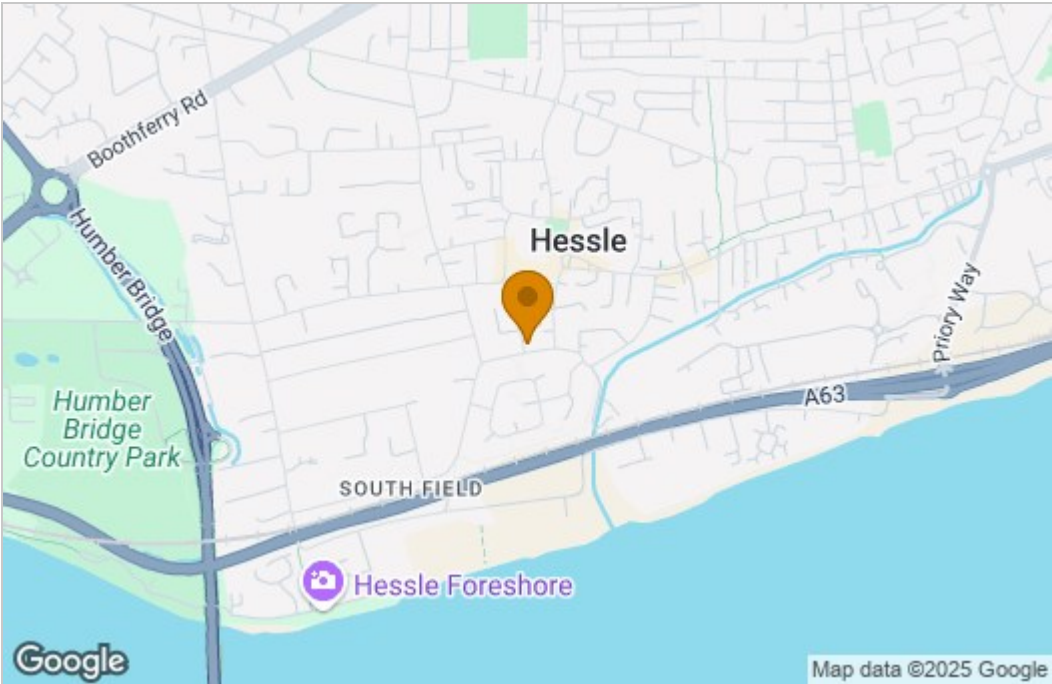
Whitakers Estate Agents for themselves and for the lessors of the property, whose agents they are give notice that these particulars are produced in good faith, are set out as a general guide only & do not constitute any part of a contract. No person in the employ of Whitakers Estate Agents has any authority to make or give any representation or warranty in relation to this property.

Floor Plan

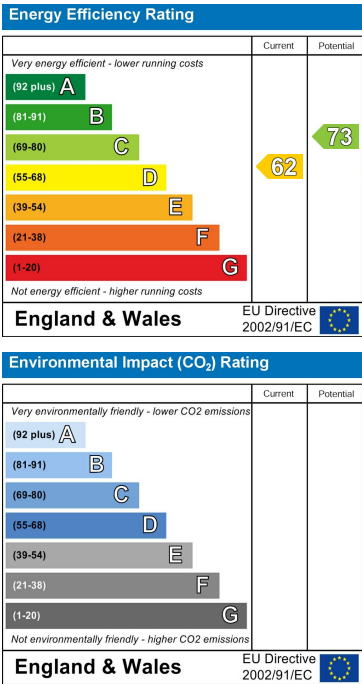


Please note floorplans are for guidance only and are intended to give a general impression of the property.
Plan produced using PlanUp.

Area Map



Energy Efficiency Graph



These particulars, whilst believed to be accurate are set out as a general outline only for guidance and do not constitute any part of an offer or contract. Intending purchasers should not rely on them as statements of representation of fact, but must satisfy themselves by inspection or otherwise as to their accuracy. No person in this firms employment has the authority to make or give any representation or warranty in respect of the property.