

The Whitehouse
Berrywood Drive
Duston
NN5 6GQ

£195,000

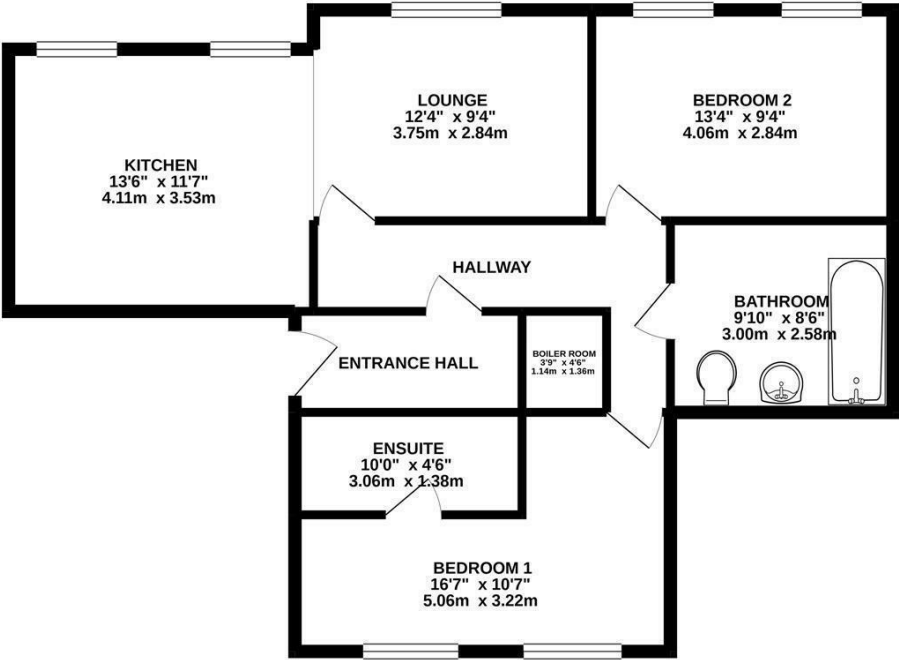


OSCAR JAMES

...expect excellence

FLOOR PLANS

GROUND FLOOR
791 sq.ft. (73.5 sq.m.) approx.



TOTAL FLOOR AREA : 791 sq.ft. (73.5 sq.m.) approx.
Whilst every attempt has been made to ensure the accuracy of the floorplan contained here, measurements of doors, windows, rooms and any other items are approximate and no responsibility is taken for any error, omission or mis-statement. This plan is for illustrative purposes only and should be used as such by any prospective purchaser. The services, systems and appliances shown have not been tested and no guarantee as to their operability or efficiency can be given.
Made with Metropix ©2020



AT A GLANCE...



Spacious living area



Kitchen Breakfast Area



Two Double Bedrooms



Ensuite to Master



Amazing Views



Private Parking



WHAT'S GREAT?

This is a truly superb apartment situated in the highly sought after location of Berrywood Drive. The White House is a beautiful looking building with stylish accommodation and private parking

This modern and stylish second floor property boasts amazing viewings and ample living accommodation

The building is accessed by secure entrance door with intercom system and the communal areas are well kept and recently decorated.

This stunning property has been well maintained with modern kitchen and bathroom along with tastefully decorated interior, two parking spaces and lovely view over the adjacent forest which is protected and is home to a variety of wildlife.

The property itself offers accommodation which comprises; entrance hall, open plan living

space with refitted kitchen. The two bedrooms are both double in size and the master has the en-suite shower room and fully fitted wardrobes. The family bathroom has been beautifully refitted with contemporary tiles sanitary ware.

Strong interest is expected so be quick and arrange your internal viewing today!

Agents note; we understand there to be 79 years left remaining on the lease. We are confirmation on the charges to include all internal maintenance to the communal areas, external maintenance and garden upkeep and buildings insurance.

...expect excellence



SELLER'S SECRET

I love the location of the property, the views over the forest are stunning and change with the seasons, its also a great place to go for country walks with the dogs.

St Crispins offers a range of facilities and excellent road links, and the building is a lovely place to live!



Why we like it....

We think this property would make a superb first time buy or buy to let opportunity and viewing is essential. Be quick though as it won't be on the market for long!

OSCAR JAMES

336 Wellingborough Road | Northampton |
NN1 4ES
01604 622722
www.oscar-james.com

To buy or not to buy....
