

Golding Crescent
Earls Barton
Northampton
NN6 0FT

Offers in excess of £300,000

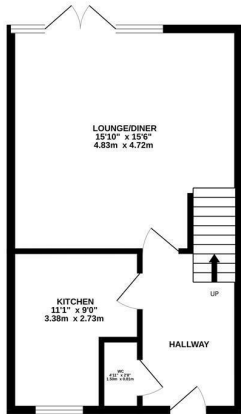


OSCAR JAMES

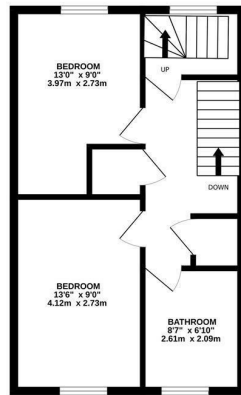
...expect excellence

FLOOR PLANS

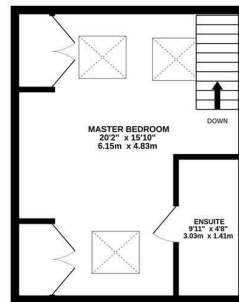
GROUND FLOOR
420 sq.ft. (39.1 sq.m.) approx.



1ST FLOOR
420 sq.ft. (39.1 sq.m.) approx.



2ND FLOOR
320 sq.ft. (29.7 sq.m.) approx.



TOTAL FLOOR AREA : 1160 sq.ft. (107.8 sq.m.) approx.

Whilst every attempt has been made to ensure the accuracy of the floorplan contained here, measurements of doors, windows, rooms and any other items are approximate and no responsibility is taken for any error, omission or mis-statement. This plan is for illustrative purposes only and should be used as such by any prospective purchaser. The services, systems and appliances shown have not been tested and no guarantee as to their operability or efficiency can be given.

Made with Metropix ©2024



AT A GLANCE...



Spacious lounge/diner



Modern kitchen with built in appliances



Three double bedrooms



Downstairs Cloakroom, Family Bathroom & Ensuite Shower Room



Low maintenance rear garden



Driveway providing off road parking



WHAT'S GREAT?

Oscar James are delighted to welcome to the market this modern townhouse situated in the sought after village of Earls Barton. Built in 2020 this home is presented in immaculate condition throughout, boasting three double bedrooms and off road parking.

Upon entering the hall gives access to all ground floor accommodation including a great size lounge/diner featuring French doors flowing out to the rear garden. The property continues into the stylish gloss kitchen which benefits from built in appliances and to conclude the ground floor there is a cloakroom plus under stairs storage.

Stairs lead to the first floor landing where you will find two of the double bedrooms and the family bathroom comprising a four piece suite. The stairs continue to rise to the impressive master bedroom spanning across the entire second floor with the addition of ample built in wardrobes and an ensuite shower room.

Externally the rear garden is mainly laid to lawn with a patio providing the perfect seating

area. There is also gated side access which leads to the driveway providing off road parking for two vehicles.

This is a lovely family home, in an excellent village location with a highly motivated vendor so please call us if you would like to arrange your viewing.

...expect excellence



SELLER'S SECRET

This has been a lovely home and we love the village location whilst still having brilliant road links on our doorstep to both Northampton & Wellingborough! We have now found our dream home so hope someone will love our house just as much as we did when we first stepped through the front door.



Why we like it....

This is the perfect family home with three **DOUBLE** bedrooms and is on a lovely modern development!

To buy or not to buy....

OSCAR JAMES

336 Wellingborough Road | Northampton |
NN1 4ES
01604 622722
www.oscar-james.com
