

Hatchwood Mill

Winnersh



Future school
development

3 bedroom home

 The Spruce

4 bedroom home

 The Juniper

 The Aspen

5 bedroom home

 The Birch

 The Yew

v visitor space



The Juniper

4 bedroom home

bovishomes.co.uk

**Bovis
Homes** 

The Juniper

4 bedroom home

| Ground floor | metres | feet / inches |
|--------------------------------|-------------|------------------|
| Kitchen / dining / family area | 7.21 x 3.51 | 23' 7" x 11' 6" |
| Sitting room | 4.55 x 3.04 | 14' 11" x 10' 0" |
| Study | 2.34 x 1.85 | 7' 8" x 6' 0" |

First floor

| | | |
|-----------|-------------|-----------------|
| Bedroom 1 | 4.66 x 3.05 | 15' 3" x 10' 0" |
| Bedroom 2 | 4.08 x 2.84 | 13' 4" x 9' 3" |
| Bedroom 3 | 3.60 x 2.38 | 11' 9" x 7' 9" |
| Bedroom 4 | 3.51 x 2.38 | 11' 6" x 7' 9" |

The Juniper | X412 P4 SNWN5 |

This floorplan has been produced for illustrative purposes only. Room sizes shown are between arrow points as indicated on plan. The dimensions have tolerances of + or -50mm and should not be used other than for general guidance. If specific dimensions are required, enquiries should be made to the sales advisor.

* Window applies to selected plots only. Please see sales advisor for further details.

| | | | |
|-----|-----------------------|-------|------------------|
| ovn | oven | ffzr | fridge freezer |
| h | hob | w | wardrobe |
| ds | dishwasher space | cup'd | cupboard |
| ws | washing machine space | ◀ ▶ | measuring points |
| ldr | larder | | |

Please refer to the sales advisor for specific plot details as the illustrations shown are computer generated impressions of how the property may look so are indicative only. External details or finishes may vary on individual plots and homes may be built in either detached or attached styles depending on the development layout. Exact specifications, window styles and whether a property is left or right handed may differ from plot to plot.

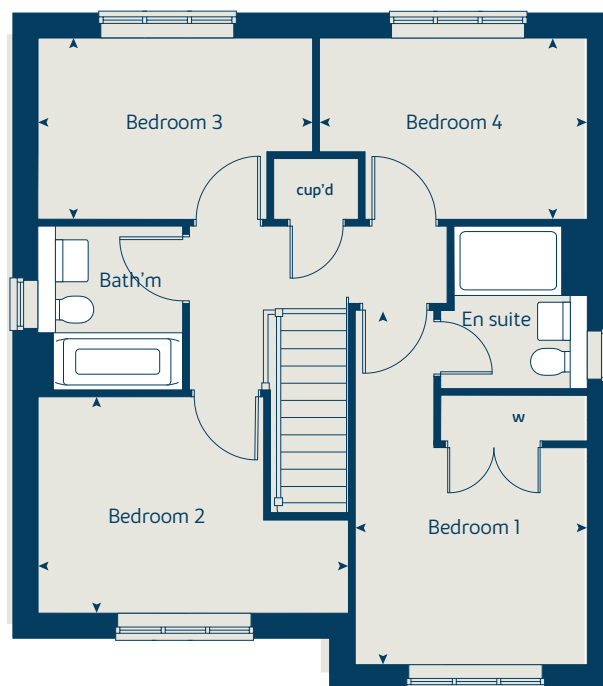
The floorplans shown are not to scale. Measurements are based on the original drawings. Slight variations may occur during construction.

Produced by the Bovis Homes Graphic Design Department.

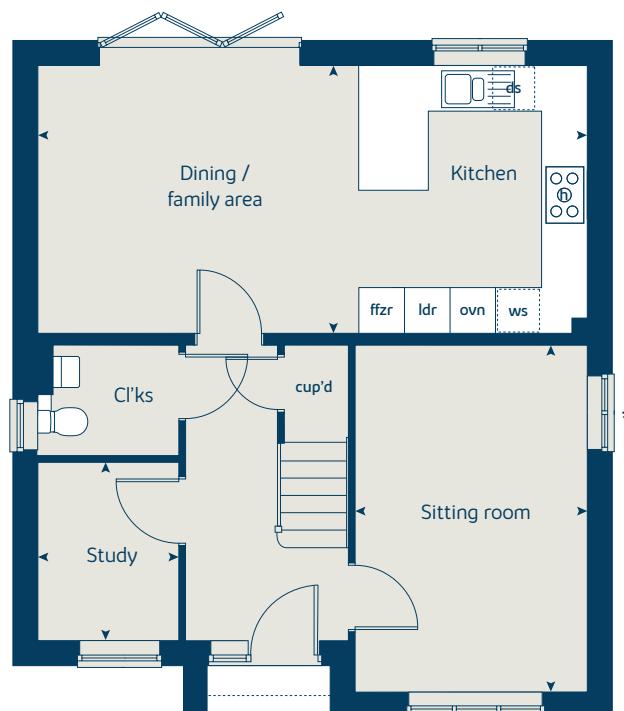
When you have finished with this leaflet please recycle it.

SNWN5 GD52539 / 06.20

First floor



Ground floor





The Aspen

4 bedroom home

bovishomes.co.uk

**Bovis
Homes** 

The Aspen

4 bedroom home

| Ground floor | metres | feet / inches |
|-----------------------|-------------|-----------------|
| Kitchen / dining area | 7.77 x 3.37 | 25' 6" x 11' 0" |
| Sitting room | 5.04 x 3.39 | 16' 6" x 11' 1" |
| Study | 2.01 x 2.01 | 6' 7" x 6' 7" |

First floor

| | | |
|-----------|-------------|-----------------|
| Bedroom 1 | 3.93 x 3.03 | 12' 9" x 9' 9" |
| Bedroom 2 | 3.76 x 3.11 | 12' 3" x 10' 2" |
| Bedroom 3 | 4.07 x 2.45 | 13' 4" x 8' 0" |
| Bedroom 4 | 3.61 x 2.45 | 11' 10" x 8' 0" |

The Aspen | X414 (IF) P6 SNWN5 |

This floorplan has been produced for illustrative purposes only. Room sizes shown are between arrow points as indicated on plan. The dimensions have tolerances of + or - 50mm and should not be used other than for general guidance. If specific dimensions are required, enquiries should be made to the sales advisor.

* Windows apply to selected plots only. Please see sales advisor for further details.

① Alternative bay window layout applies to selected plots only. Please see sales advisor for further details.

| | | | |
|------|-----------------------|-------|------------------|
| ovn | oven | ldr | larder |
| h | hob | w | wardrobe |
| ds | dishwasher space | cup'd | cupboard |
| ws | washing machine space | ◀ ▶ | measuring points |
| ffzr | fridge freezer | | |

Please refer to the sales advisor for specific plot details as the illustrations shown are computer generated impressions of how the property may look so are indicative only. External details or finishes may vary on individual plots and homes may be built in either detached or attached styles depending on the development layout. Exact specifications, window styles and whether a property is left or right handed may differ from plot to plot.

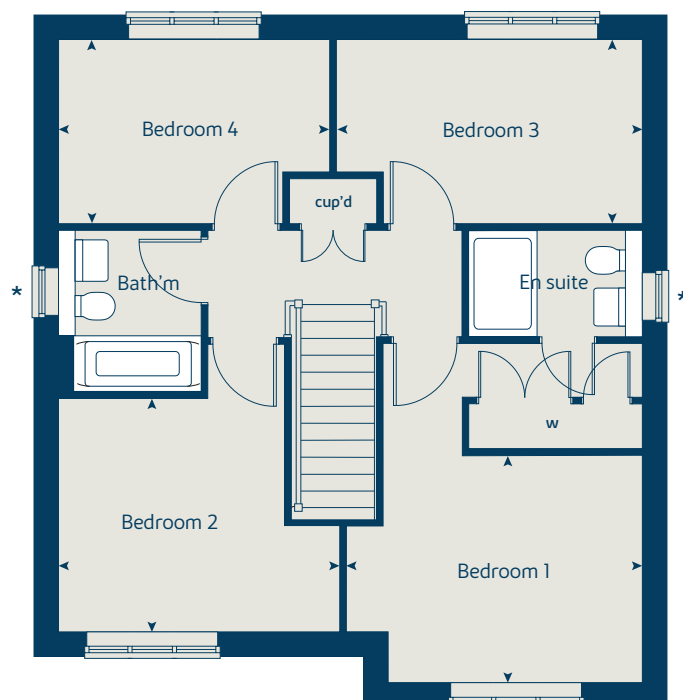
The floorplans shown are not to scale. Measurements are based on the original drawings. Slight variations may occur during construction.

Produced by the Bovis Homes Graphic Design Department.

When you have finished with this leaflet please recycle it.

SNWN5 GD52539 / 06.20

First floor



Ground floor





The Yew

5 bedroom home

bovishomes.co.uk

**Bovis
Homes** 

The Yew

5 bedroom home

| Ground floor | metres | feet / inches |
|--------------------------------|-------------|-----------------|
| Kitchen / family / dining area | 8.45 x 3.17 | 27' 9" x 10' 5" |
| Sitting room | 4.66 x 3.17 | 15' 3" x 10' 4" |
| Study | 3.17 x 1.76 | 10' 4" x 5' 9" |

| First floor | metres | feet / inches |
|-------------|-------------|-----------------|
| Bedroom 1 | 3.49 x 3.73 | 11' 5" x 12' 2" |
| Bedroom 3 | 4.20 x 3.20 | 13' 8" x 10' 6" |
| Bedroom 5 | 2.88 x 2.27 | 9' 5" x 7' 5" |

| Second floor | metres | feet / inches |
|--------------|-------------|-----------------|
| Bedroom 2 | 5.32 x 3.23 | 17' 6" x 10' 7" |
| Bedroom 4 | 3.73 x 3.12 | 12' 2" x 10' 3" |

The Yew | X519 (IF) P5 vt SNWN5 |

This floorplan has been produced for illustrative purposes only. Room sizes shown are between arrow points as indicated on plan. The dimensions have tolerances of + or -50mm and should not be used other than for general guidance. If specific dimensions are required, enquiries should be made to the sales advisor.

* Window applies to selected plots only. Please see sales advisor for further details.

| | | | |
|------|-----------------------|-------|--------------------|
| ovn | oven | ldr | larder |
| h | hob | w | wardrobe |
| dw | dishwasher | cup'd | cupboard |
| ws | washing machine space | cyl | hot water cylinder |
| ffzr | fridge freezer | ◀ ▶ | measuring points |

Please refer to the sales advisor for specific plot details as the illustrations shown are computer generated impressions of how the property may look so are indicative only. External details or finishes may vary on individual plots and homes may be built in either detached or attached styles depending on the development layout. Exact specifications, window styles and whether a property is left or right handed may differ from plot to plot.

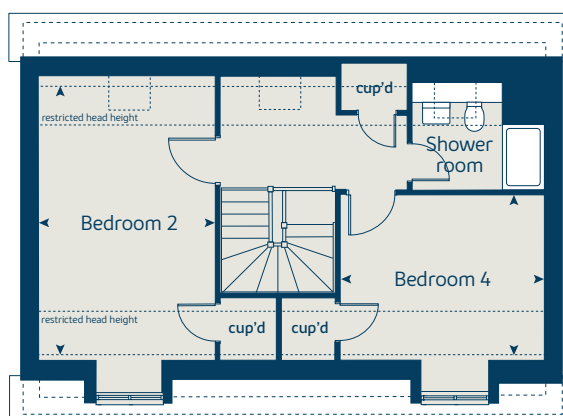
The floorplans shown are not to scale. Measurements are based on the original drawings. Slight variations may occur during construction.

Produced by the Bovis Homes Graphic Design Department.

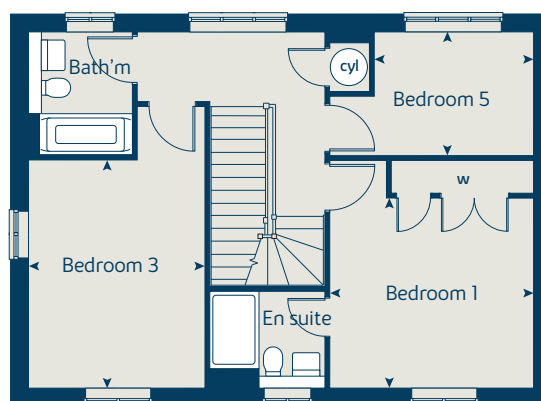
When you have finished with this leaflet please recycle it.

SNWN5 GD52539 / 06.20

Second floor



First floor



Ground floor

